

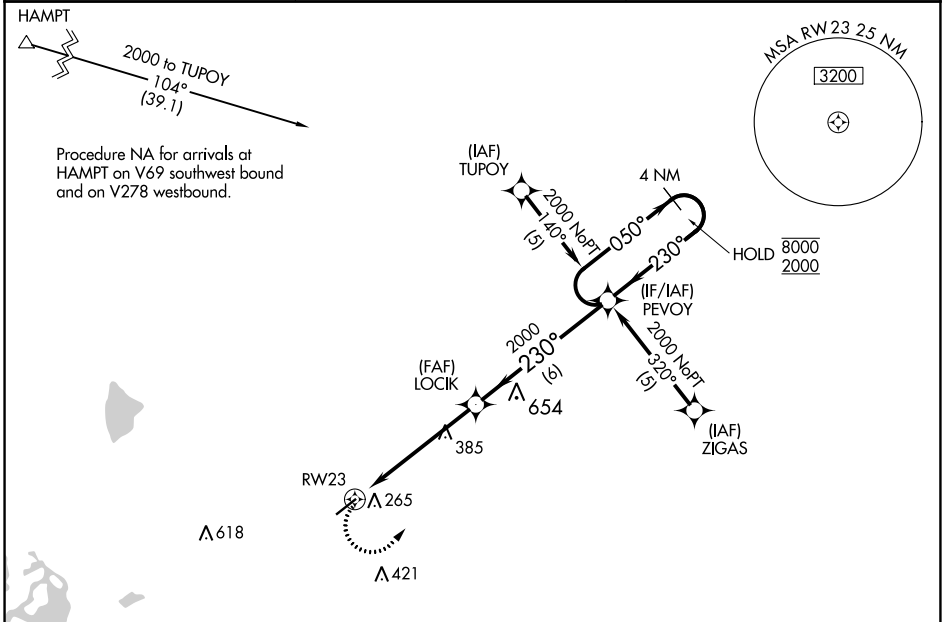
APP CRS <b>230°</b>	Rwy Idg TDZE Apt Elev	<b>5010</b> <b>184</b> <b>184</b>
------------------------	-----------------------------	-----------------------------------------

# RNAV (GPS) RWY 23

Z M JACK STELL FLD (C'RT)

RNP APCH - GPS.		MISSED APPROACH: Climbing left turn to 2000 direct PEVOY and hold.
<p><b>▼</b> Rwy 23 helicopter visibility reduction below 1 SM NA. Straight-in and Circling Rwy 23 NA at night. Use Monroe LA. altimeter setting; when not received, use El Dorado altimeter setting and increase all MDA 20 feet, increase LNAV Cat C visibility 1/8 SM and Circling Cat C visibility 1/4 SM.</p> <p><b>▲ NA</b></p>		

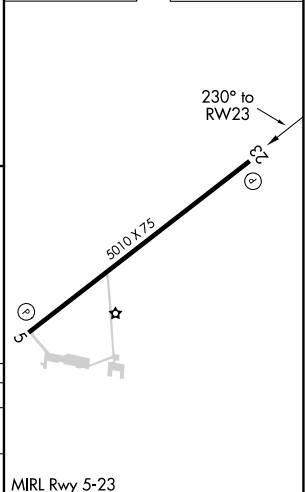
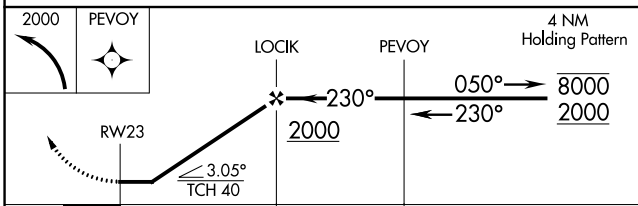
MLU ASOS <b>125.05</b>	MEMPHIS CENTER <b>135.875 269.35</b>	UNICOM <b>122.8 (CTAF)</b>
---------------------------	-----------------------------------------	-------------------------------



SC-1, 11 JUL 2024 to 08 AUG 2024

SC-1, 11 JUL 2024 to 08 AUG 2024

ELEV 184	TDZE 184
----------	----------



CATEGORY	A	B	C	D
LNAV MDA	760-1	576 (600-1)	760-1 <sup>5</sup> / <sub>8</sub> 576 (600-1 <sup>5</sup> / <sub>8</sub> )	NA
<b>C</b> CIRCLING	760-1	576 (600-1)	840-1 <sup>3</sup> / <sub>4</sub> 656 (700-1 <sup>3</sup> / <sub>4</sub> )	NA