

(FOXHL1.FOXHL) 24193

AL-5533 (FAA)

# FOXHL ONE DEPARTURE (RNAV)

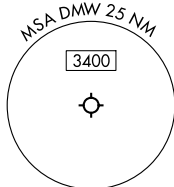
CARROLL COUNTY RGNL/JACK B POAGE FLD(DMW)  
WESTMINSTER, MARYLAND

POTOMAC DEP CON  
125.525 291.625  
AWOS-3  
121.25

RNAV 1 - DME/DME/IRU or GPS.

RADAR required.

**TOP ALTITUDE:  
17000**

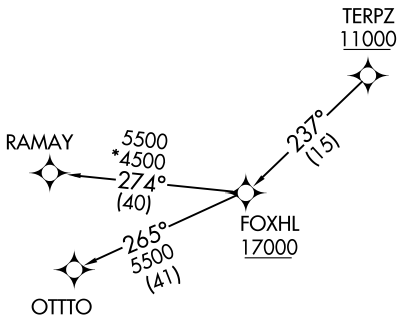


NOTE: Jet aircraft only.

### TAKEOFF MINIMUMS:

Rwy 16: 400-2¾ or Standard with minimum climb of  
225'/NM to 1300.

Rwy 34: Standard.



NOTE: Chart not to scale.



## DEPARTURE ROUTE DESCRIPTION

Climb on assigned heading for RADAR vectors to cross TERPZ at or above 11000, thence....

...then on track 237° to cross FOXHL at or above 17000, then on assigned transition. Maintain 17000, expect filed altitude 10 minutes after departure.

OTTTO TRANSITION (FOXHL1.OTTTO)

RAMAY TRANSITION (FOXHL1.RAMAY)

FOXHL ONE DEPARTURE (RNAV)  
(FOXHL1.FOXHL1) 11JUL24

CARROLL COUNTY RGNL/JACK B POAGE FLD(DMW)  
WESTMINSTER, MARYLAND

NE-3, 11 JUL 2024 to 08 AUG 2024

NE-3, 11 JUL 2024 to 08 AUG 2024