

LOC/DME I-TXH <b>110.7</b> Chan <b>44</b>	APP CRS <b>350°</b>	Rwy Idg <b>6016</b> TDZE <b>78</b> Apt Elev <b>82</b>
---	------------------------	---

# ILS or LOC RWY 35

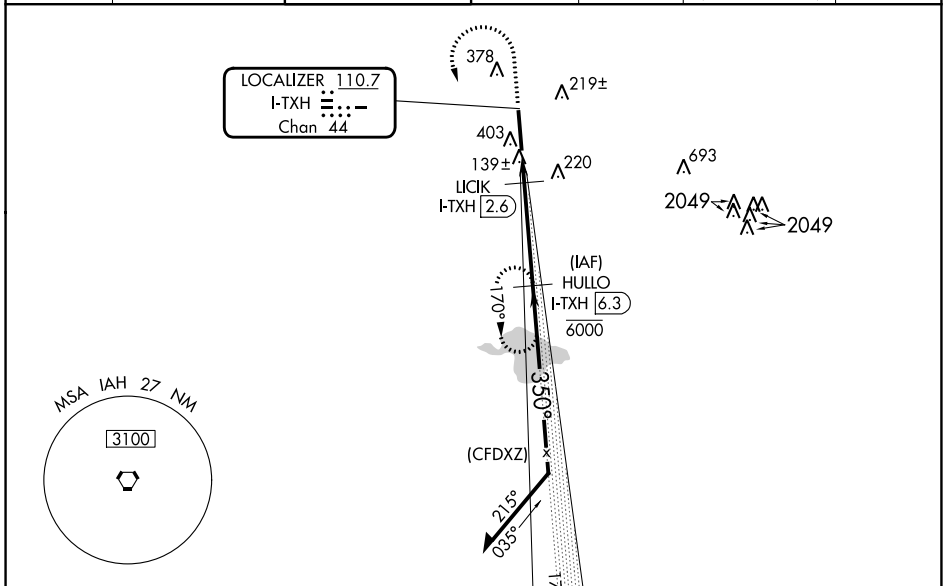
SUGAR LAND RGNL (SGR)

DME required.  
RADAR required for procedure entry.

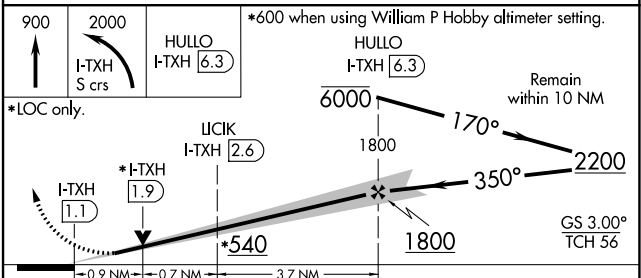
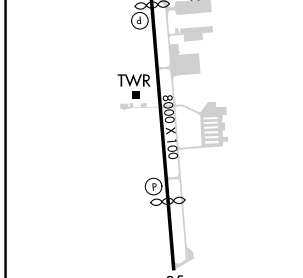
VDP NA when using William P Hobby altimeter setting. When local altimeter setting not received, use William P Hobby altimeter setting and increase all DA 51 feet and all MDA 60 feet and S-LOC 35 Cat C/D visibility 1/8 mile, and Circling Cat C/D visibility 1/4 mile.

MISSED APPROACH: Climb to 900 then climbing left turn to 2000 on I-TXH localizer south course to HULLO/I-TXH 6.3 DME and hold.

ATIS★ <b>118.125</b>	HOUSTON APP CON <b>123.8 257.7</b>	SUGAR LAND TOWER★ <b>118.65</b> (CTAF) <b>0</b>	GND CON <b>121.4</b>	CLNC DEL <b>121.4</b>	CLNC DEL <b>119.25</b> (when twr closed)	UNICOM <b>122.95</b>
-------------------------	---------------------------------------	--	-------------------------	--------------------------	--	-------------------------



ELEV 82	TDZE 78
---------	---------



CATEGORY	A	B	C	D
S-ILS 35	278-3/4		200 (200-3/4)	
S-LOC 35	400-1		322 (400-1)	
<input checked="" type="checkbox"/> CIRCLING	720-1	638 (700-1)	720-1 3/4 638 (700-1 3/4)	720-2 638 (700-2)

SC-5, 11 JUL 2024 to 08 AUG 2024

SC-5, 11 JUL 2024 to 08 AUG 2024