

KARRR SEVEN DEPARTURE (RNAV)  
(KARRR7 .KARRR) 29DEC22

HOUSTON, TEXAS  
SUGAR LAND RGNL (SGR)

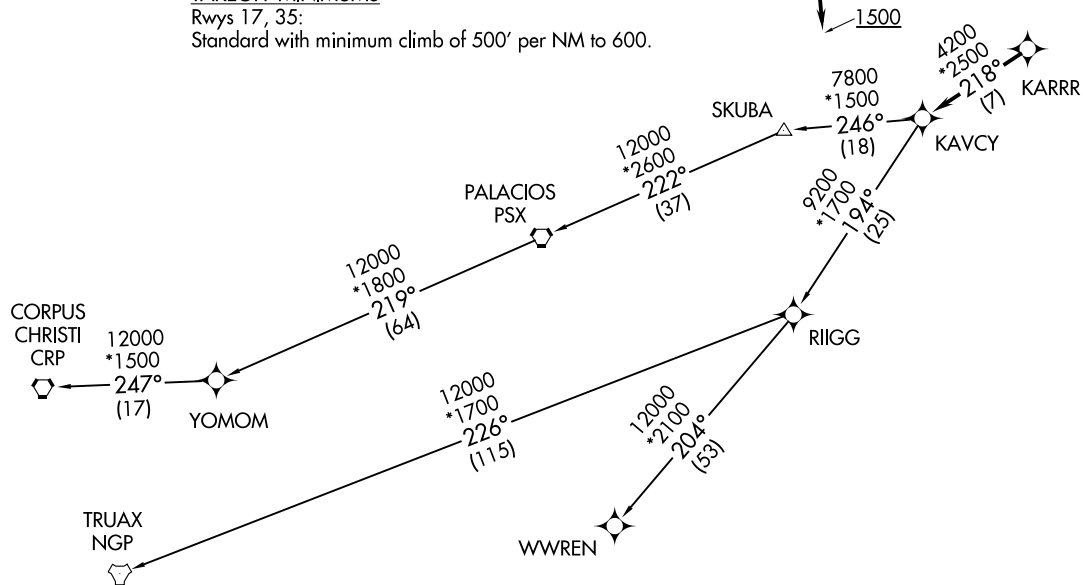
ATIS★  
118.125  
CLNC DEL  
121.4  
CLNC DEL (when twr closed)  
119.25  
GND CON  
121.4  
SUGARLAND TOWER★  
118.65 (CTAF)  
HOUSTON DEP CON  
123.8 257.7

RNAV-1 DME/DME/IRU or GPS.  
RADAR required.

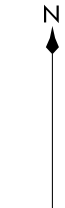
TAKEOFF MINIMUMS

Rwys 17, 35:  
Standard with minimum climb of 500' per NM to 600.

**TOP ALTITUDE:  
ASSIGNED BY ATC**



(NARRATIVE ON FOLLOWING PAGE)



NOTE: Chart not to scale.

(KARRR7 .KARRR) 22363  
KARRR SEVEN DEPARTURE (RNAV)

AL-5537 (FAA)  
SUGAR LAND RGNL (SGR)  
HOUSTON, TEXAS

# KARRR SEVEN DEPARTURE (RNAV)



## DEPARTURE ROUTE DESCRIPTION

TAKEOFF RUNWAY 17: Climb on heading 170° to 1500, for RADAR vectors to KARRR, thence. . . .

TAKEOFF RUNWAY 35: Climb on heading 350° to 1100, for RADAR vectors to KARRR, thence. . . .

. . . .on track 218° to KAVCY, then on (transition). Maintain ATC assigned altitude. Expect filed altitude 10 minutes after departure.

CORPUS CHRISTI TRANSITION (KARRR7.CRP)

PALACIOS TRANSITION (KARRR7.PSX)

TRUAX TRANSITION (KARRR7.NGP)

WWREN TRANSITION (KARRR7.WWREN)

YOMOM TRANSITION (KARRR7.YOMOM)

SC-5, 11 JUL 2024 to 08 AUG 2024

SC-5, 11 JUL 2024 to 08 AUG 2024