

WAAS CH 56219 W35A	APP CRS 350°	Rwy Idg TDZE 78 Apt Elev 82	6016
--	------------------------	---	-------------

RNAV (GPS) RWY 35

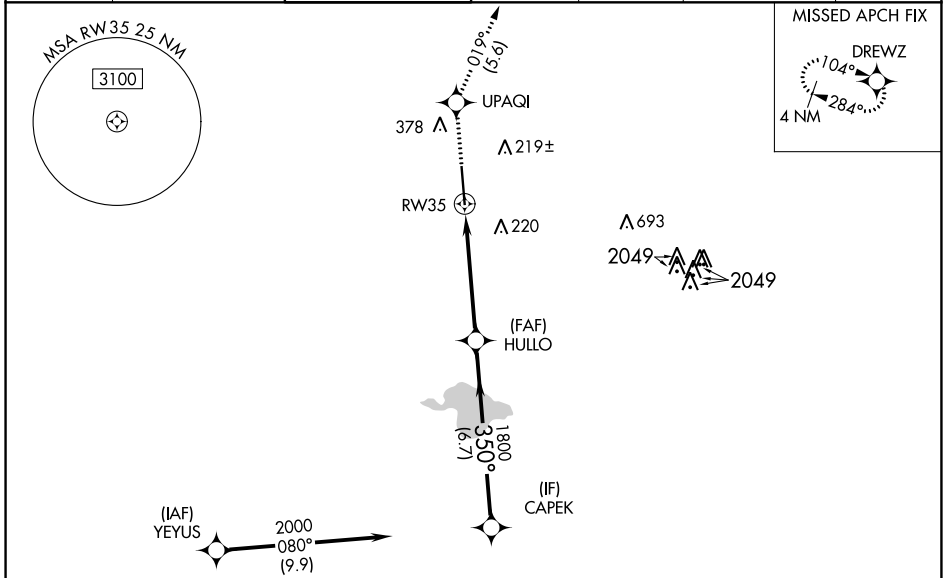
SUGAR LAND RGNL (SGR)

RNP APCH.

⚠ For uncompensated Baro-VNAV systems, LNAV/VNAV NA below -15°C (5°F) or above 43°C (109°F).
⚠ Baro-VNAV and VDP NA when using William P Hobby altimeter setting. When local altimeter setting not received, use William P Hobby altimeter setting: increase all DA 51 feet; increase all MDA 60 feet and increase LNAV-VNAV all Cats visibility to 1¼, LNAV Cat C/D visibility to 1⅞, and Circling Cat C visibility to 2, Cat D to 2¼. When VGSI inop., Circling Rwy 17 NA at night.

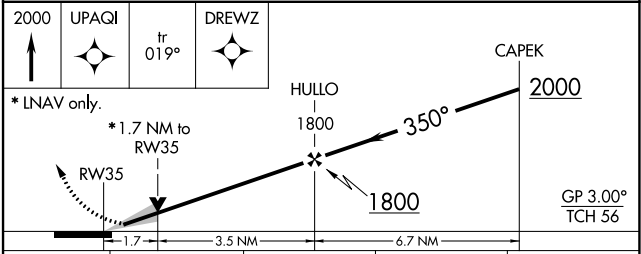
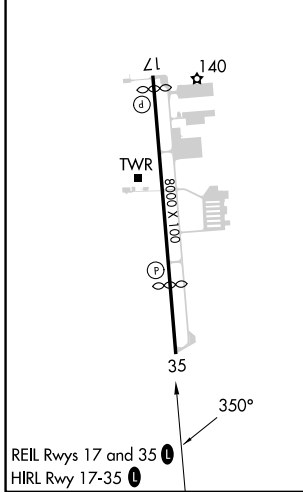
MISSED APPROACH:
 Climb to 2000 direct UPAQI and on track 019° to DREWZ and hold.

ATIS* 118.125	HOUSTON APP CON 123.8 257.7	SUGAR LAND TOWER* 118.65 (CTAF) 0	GND CON 121.4	CLNC DEL 121.4	CLNC DEL 119.25 (when twr closed)	UNICOM 122.95
--------------------------------	--	--	--------------------------------	---------------------------------	---	--------------------------------



ELEV 82	TDZE 78
----------------	----------------

RADAR REQUIRED



CATEGORY	A	B	C	D
LPV DA	278-3/4 200 (200-3/4)			
LNAV/VNAV DA	567-15/8 489 (500-15/8)			
LNAV MDA	660-1 582 (600-1)	660-13/4 582 (600-13/4)		
C CIRCLING	720-1 638 (700-1)	720-13/4 638 (700-13/4)		720-2 638 (700-2)

SC-5, 11 JUL 2024 to 08 AUG 2024

SC-5, 11 JUL 2024 to 08 AUG 2024