

WAAS CH 78023 W16A	APP CRS 157°	Rwy Idg TDZE Apt Elev	5000 16 16
--	------------------------	-----------------------------	---------------------------------------

RNAV (GPS) RWY 16

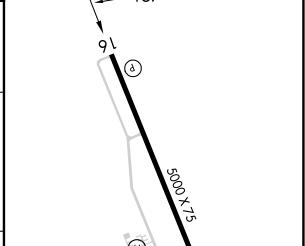
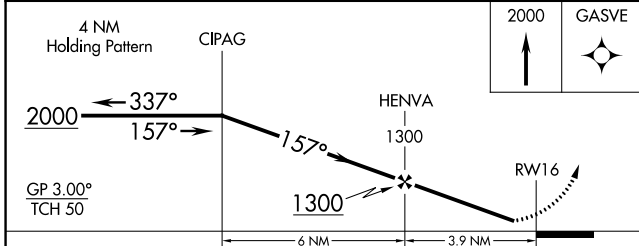
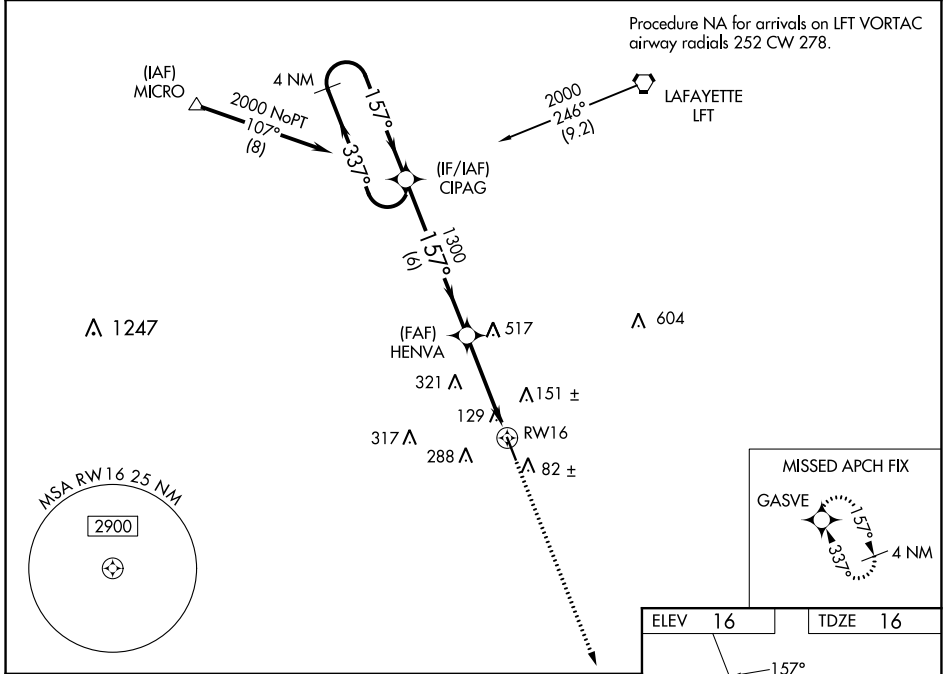
ABBEVILLE CHRIS CRUSTA MEML (IYA)

RNP APCH.

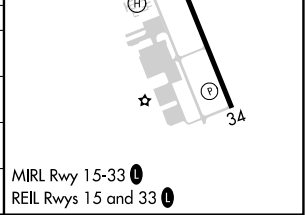
Baro-VNAV NA when using New Iberia altimeter setting. For uncompensated Baro-VNAV systems, LNAV/VNAV NA below -15°C (5°F) or above 54°C (130°F). Helicopter visibility reduction below 3/4 SM NA. When local altimeter setting not received, use New Iberia altimeter setting and increase all DA 27 feet and all MDA 40 feet.

MISSED APPROACH: Climb to 2000 direct GASVE and hold.

AWOS-3PT 118.875	LAFAYETTE APP CON ★ 121.1 268.7	GCO 135.075	UNICOM 122.8 (CTAF)
----------------------------	---	-----------------------	-------------------------------



CATEGORY	A	B	C	D
LPV DA	266-1	250 (300-1)		NA
LNAV/VNAV DA	279-1	263 (300-1)		NA
LNAV MDA	380-1	364 (400-1)		NA
CIRCLING	520-1 504 (600-1)	600-1 584 (600-1)	700-2 684 (700-2)	NA



SC-4, 11 JUL 2024 to 08 AUG 2024

SC-4, 11 JUL 2024 to 08 AUG 2024