

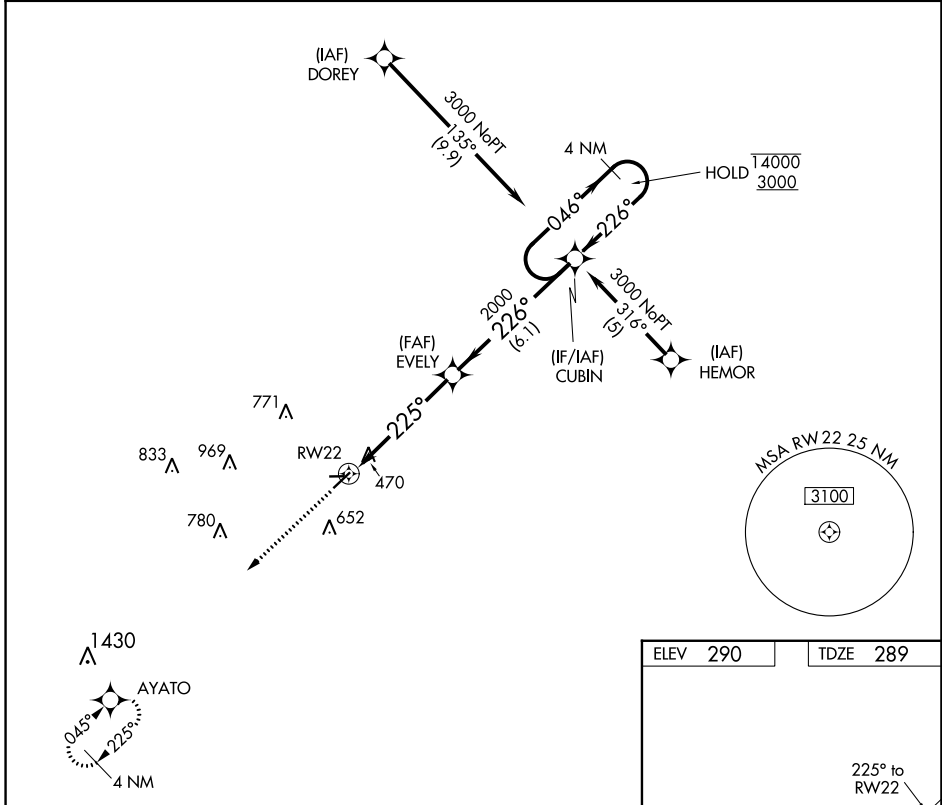
APP CRS	Rwy Idg	<b>4352</b>
<b>225°</b>	TDZE	<b>289</b>
	Apt Elev	<b>290</b>

# RNAV (GPS) RWY 22

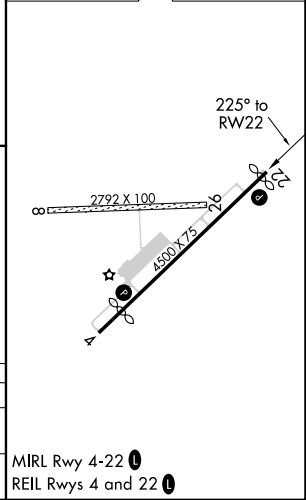
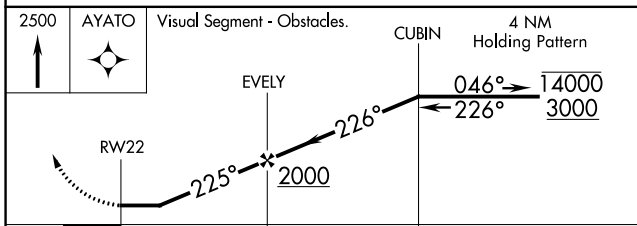
KIRK FLD (PGR)

RNP APCH - GPS	MISSED APPROACH: Climb to 2500 direct AYATO and hold.
<p><b>NA</b> Circling NA to Rwys 8 and 26. Rwy 22 helicopter visibility reduction below <math>\frac{1}{2}</math> SM NA. Use Jonesboro altimeter setting; when not received, use Walnut Ridge altimeter setting and increase all MDA 20 feet.</p>	

JBR ASOS <b>118.525</b>	MEMPHIS CENTER <b>120.075 289.4</b>	UNICOM <b>122.8 (CTAF) 0</b>
----------------------------	--	---------------------------------



ELEV 290	TDZE 289
----------	----------



CATEGORY	A	B	C	D
LNVA MDA	820-1¼	531 (600-1¼)	NA	
<b>C</b> CIRCLING	860-1¼ 570 (600-1¼)	1000-1¼ 710 (800-1¼)	NA	

SC-1, 11 JUL 2024 to 08 AUG 2024

SC-1, 11 JUL 2024 to 08 AUG 2024