

VOR/DME JBR 115.85 Chan 105(Y)	APP CRS 019°	Rwy Idg TDZE Apt Elev 4011 290 290
--	------------------------	--

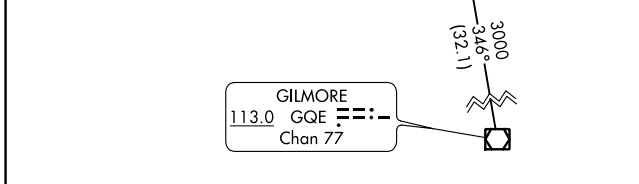
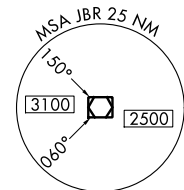
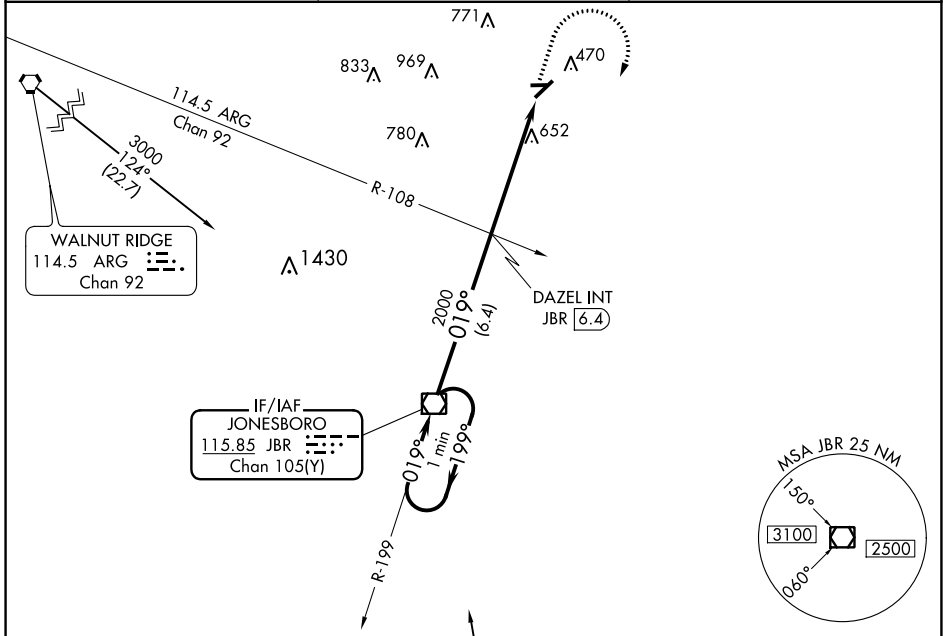
VOR RWY 4

KIRK FLD (PGR)

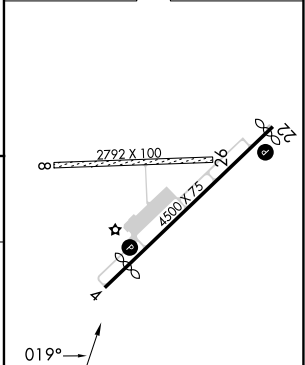
▼ Helicopter visibility reduction below 1 SM NA. Procedure NA at night.
▲ NA Circling NA to Rwy's 8 and 26. Use Jonesboro altimeter setting; when not received, use Walnut Ridge altimeter setting and increase all MDAs 20 feet.

MISSED APPROACH: Climb to 1500 then climbing right turn to 3000 direct JBR VOR/DME and hold.

JBR ASOS 118.525	MEMPHIS CENTER 120.075 289.4	UNICOM 122.8 (CTAF) 0
----------------------------	--	---------------------------------



ELEV 290	TDZE 290
----------	----------



One Minute Holding Pattern	JBR VOR/DME	1500	3000	JBR
3000 ← 199°	019° →	↑	↷	☐
VGSi and descent angles not coincident (VGSi Angle 3.00/TCH 18).		DAZEL INT JBR (6.4)	JBR (11.7)	
		3.00° TCH 40		
		6.4 NM	5.2 NM	

MIRL Rwy 4-22 0	
REIL Rwy's 4 and 22 0	
FAF to MAP 5.2 NM	
Knots	60 90 120 150 180
Min:Sec	5:12 3:28 2:36 2:05 1:44

CATEGORY	A	B	C	D
S-4	980-1 690 (700-1)		NA	
CIRCLING	980-1 690 (700-1)	1000-1 710 (800-1)	NA	