

WAAS CH 90323 W19A	APP CRS 187°	Rwy Idg TDZE 476 Apt Elev 489	5001 476 489
--	------------------------	---	---

RNAV (GPS) RWY 19

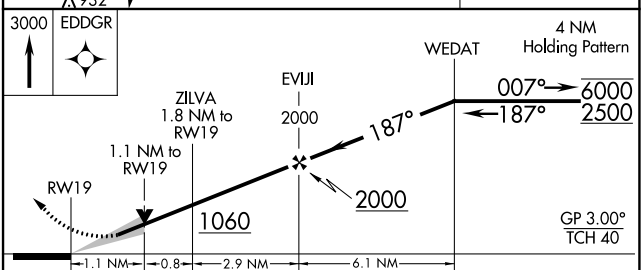
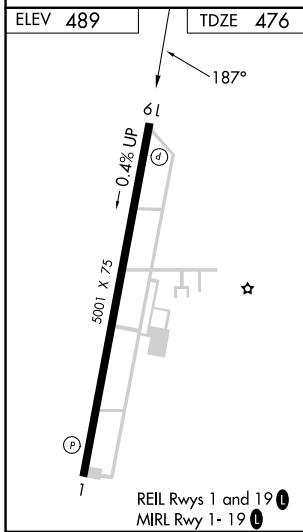
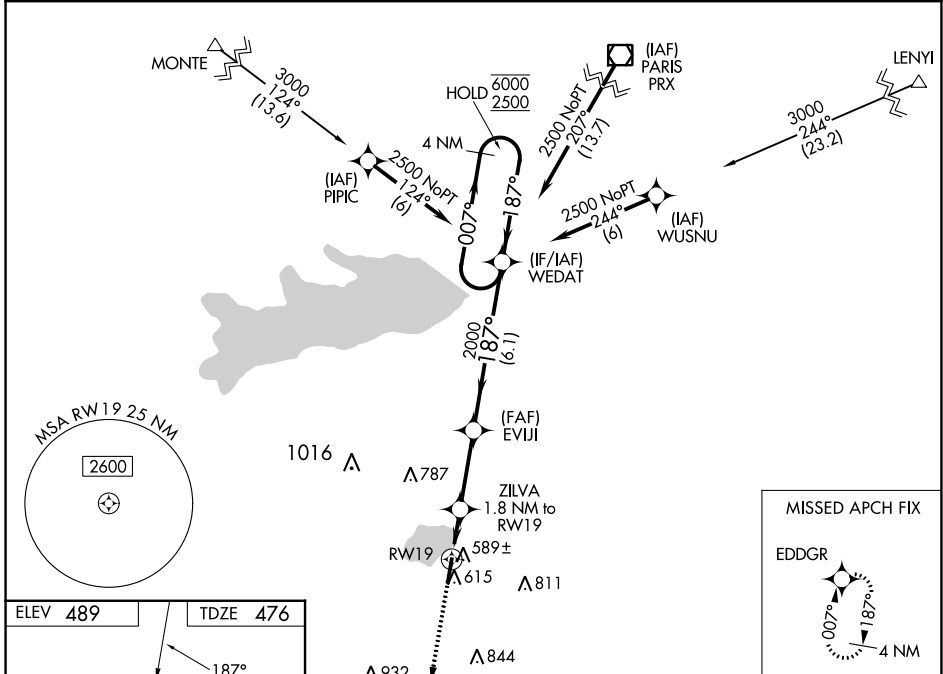
SULPHUR SPRINGS MUNI (SLR)

RNP APCH-GPS.

⚠ Circling NA east of Rwy 1-19. For uncompensated Baro-VNAV systems, LNAV/VNAV NA below -15°C or above 54°C.

MISSED APPROACH: Climb to 3000 direct EDDGR and hold.

AWOS-3 118.35	FORT WORTH CENTER 132.025 360.75	UNICOM 123.075 (CTAF) 0
-------------------------	--	-----------------------------------



CATEGORY	A	B	C	D
LPV DA		726-¾	250 (300-¾)	NA
LNAV/VNAV DA		776-1	300 (300-1)	NA
LNAV MDA		840-1	364 (400-1)	NA
C CIRCLING	940-1	451 (500-1)	1000-1½ 511 (600-1½)	NA

SC-2, 11 JUL 2024 to 08 AUG 2024

SC-2, 11 JUL 2024 to 08 AUG 2024