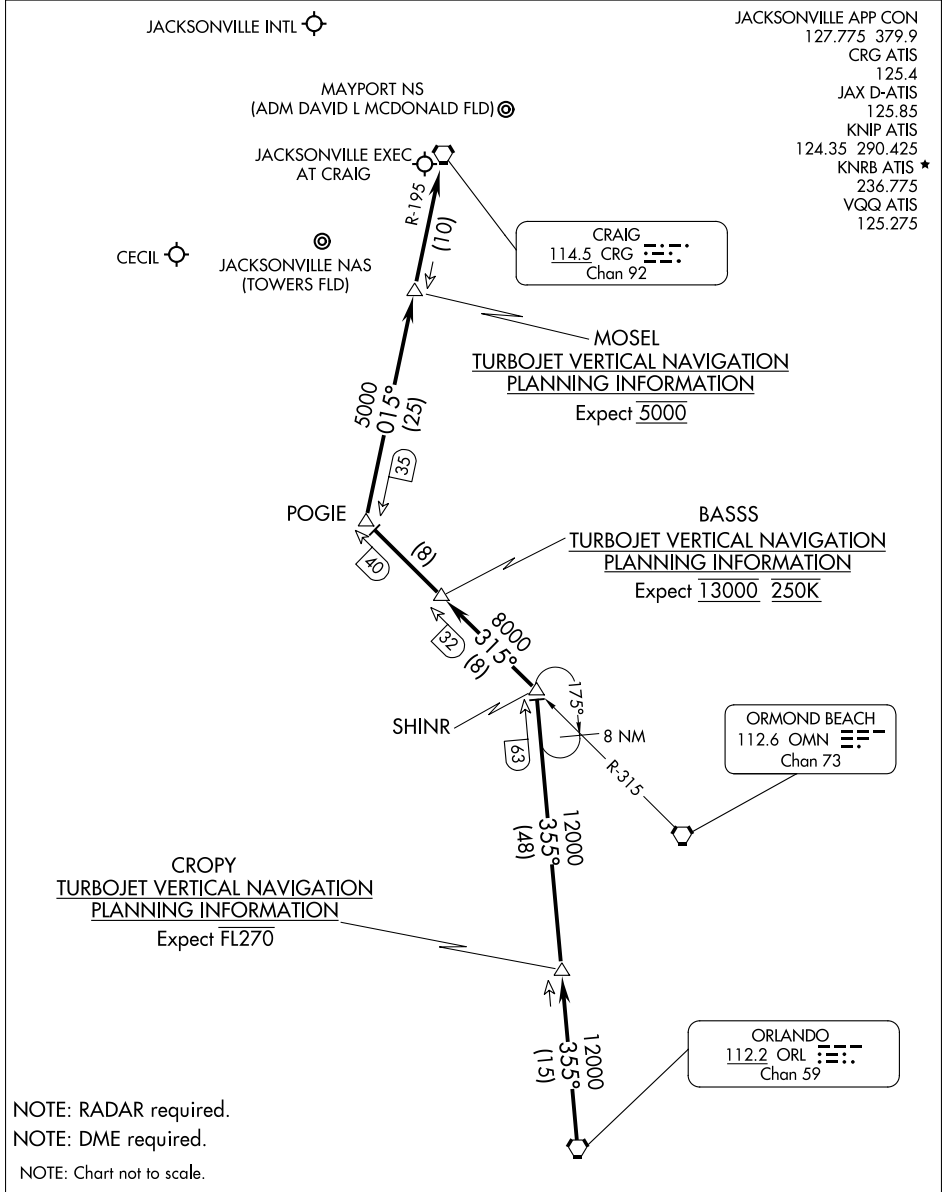


SE-3, 11 JUL 2024 to 08 AUG 2024

SE-3, 11 JUL 2024 to 08 AUG 2024



NOTE: RADAR required.
 NOTE: DME required.
 NOTE: Chart not to scale.

ARRIVAL ROUTE DESCRIPTION

From over ORL VORTAC on ORL R-355 to SHINR, then on OMN R-315 to POGIE, then on CRG R-195 to CRG VORTAC. Expect RADAR vectors to final approach course after CRG VORTAC.