

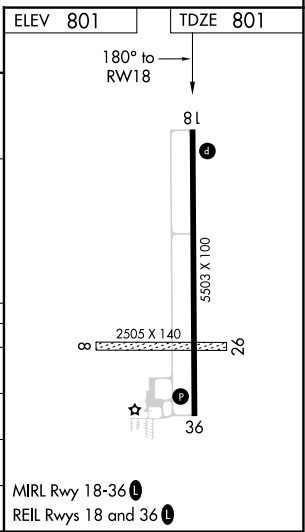
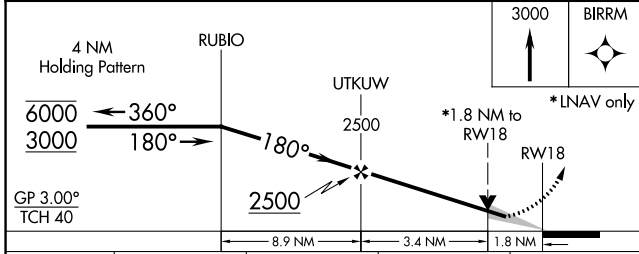
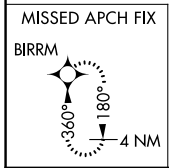
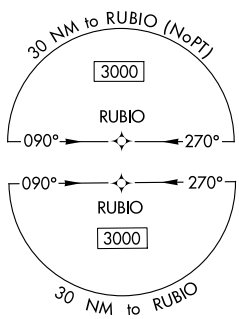
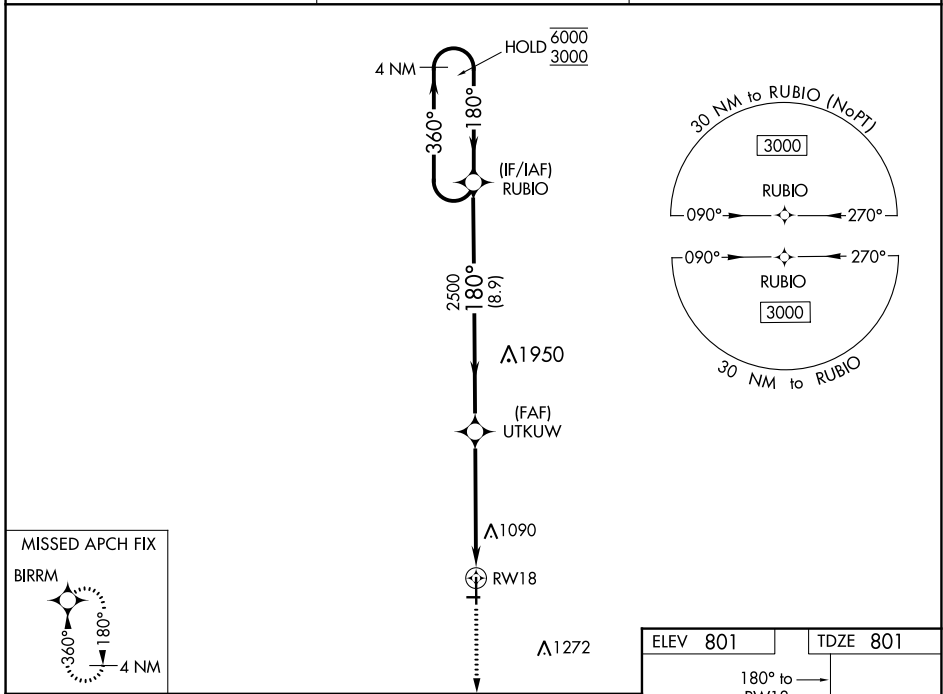
WAAS CH <b>82503</b> <b>W18A</b>	APP CRS <b>180°</b>	Rwy Idg <b>5503</b> TDZE <b>801</b> Apt Elev <b>801</b>
--	------------------------	---

# RNAV (GPS) RWY 18

FAIRFIELD MUNI (F'FL)

RNP APCH.	MISSED APPROACH: Climb to 3000 direct BIRRM and hold.
⚠ Circling NA to Rwy 8 and 26. For uncompensated Baro-VNAV systems, LNAV/VNAV NA below -16°C or above 54°C.	

AWOS-3 <b>132,025</b>	CHICAGO CENTER <b>118.15 335.575</b>	UNICOM <b>122.7 (CTAF)</b>
--------------------------	---	-------------------------------



CATEGORY	A	B	C	D
LPV DA	1001-3/4	200 (200-3/4)		NA
LNAV/VNAV DA	1471-17/8	670 (700-17/8)		NA
LNAV MDA	1400-1	599 (600-1)	1400-1 3/4 599 (600-1 3/4)	NA
<b>C</b> CIRCLING	1400-1 599 (600-1)	1440-1 639 (700-1)	1440-1 3/4 639 (700-1 3/4)	NA

NC-3, 11 JUL 2024 to 08 AUG 2024

NC-3, 11 JUL 2024 to 08 AUG 2024