

APP CRS	Rwy Idg	2690
312°	TDZE	133
	Apt Elev	135

RNAV (GPS) Y RWY 31R

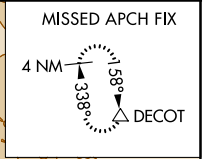
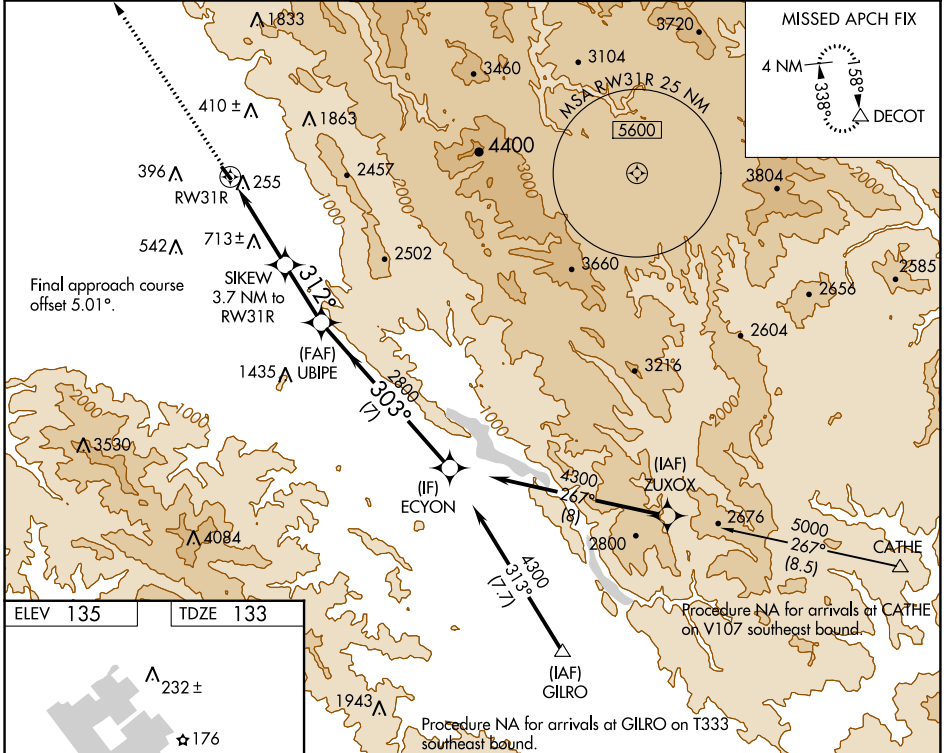
REID-HILLVIEW OF SANTA CLARA COUNTY (R.H.V)

RNP APCH.

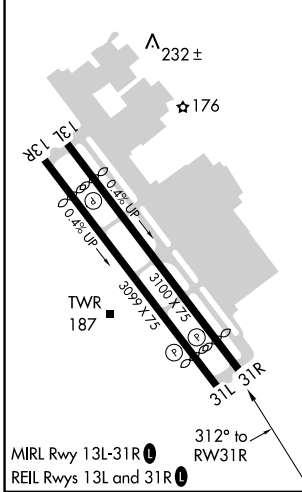
NA Circling Rwy 31L NA at night. Rwy 31R helicopter visibility reduction below 3/4 SM NA. VDP NA when using Norman Y Mineta San Jose Intl altimeter setting. Circling east of Rwy 13L-31R NA at night. When control tower closed, use Norman Y Mineta San Jose Intl altimeter setting and increase all MDA's 40 feet.

MISSED APPROACH: Climb to 4000 direct DECOY and hold.

ATIS	NORCAL APP CON	REID-HILLVIEW TOWER * (Rwy 13L-31R) (Rwy 13R-31L)	GND CON	UNICOM
125.2	120.1 290.25	119.8 (CTAF) 0 126.1	121.65	122.95



ELEV 135	TDZE 133
----------	----------



4000	DECOY	ECYON		
↑	△			
RWY 31R	SIKEW 3.7 NM to RWY 31R	UBIPE		
2.6 NM to RWY 31R	2.6 NM to RWY 31R	UBIPE		
1760	2800	4300		
312°	303°			
2.6 NM	1.1 NM	2.5 NM		
7 NM				
CATEGORY	A	B	C	D
LNAV MDA	1300-1¼ 1167 (1200-1¼)	1300-1½ 1167 (1200-1½)		NA
CIRCLING	1300-1¼ 1165 (1200-1¼)	1300-1½ 1165 (1200-1½)		NA

SW-2, 11 JUL 2024 to 08 AUG 2024

SW-2, 11 JUL 2024 to 08 AUG 2024