

(FOXHL1.FOXHL) 24193

AL-5596 (FAA)

EASTON/NEWNAM FLD (ESN)

# FOXHL ONE DEPARTURE (RNAV)

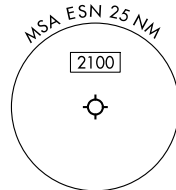
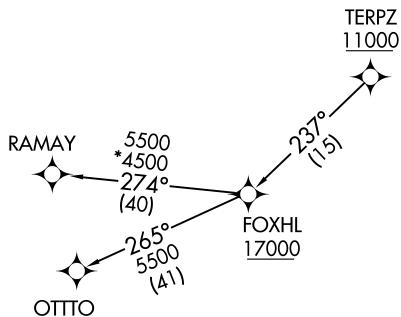
EASTON, MARYLAND

POTOMAC DEP CON  
133.75 254.35  
ATIS  
124.475  
CLNC DEL  
119.075  
GND CON  
119.075  
EASTON TOWER ★  
118.525

RNAV 1 - DME/DME/IRU or GPS.

RADAR required.

**TOP ALTITUDE:  
17000**



NOTE: Jet aircraft only.

**TAKEOFF MINIMUMS:**

Rwys 4, 15, 33: Standard.  
Rwy 22: 300-2 or Standard with minimum climb  
of 210'/NM to 400.



NOTE: Chart not to scale.

## DEPARTURE ROUTE DESCRIPTION

Climb on assigned heading for RADAR vectors to cross TERPZ at or above 11000, thence....

....then on track 237° to cross FOXHL at or above 17000, then on assigned transition. Maintain 17000, expect filed altitude 10 minutes after departure.

OTTTO TRANSITION (FOXHL1.OTTTO)

RAMAY TRANSITION (FOXHL1.RAMAY)

**FOXHL ONE DEPARTURE (RNAV)**  
(FOXHL1.FOXHL) 11JUL24

EASTON, MARYLAND  
EASTON/NEWNAM FLD (ESN)

NE-3, 11 JUL 2024 to 08 AUG 2024

NE-3, 11 JUL 2024 to 08 AUG 2024