

WAAS CH <b>93732</b> <b>W32A</b>	APP CRS <b>322°</b>	Rwy Idg TDZE <b>1130</b> Apt Elev <b>1136</b>
--	------------------------	---

# RNAV (GPS) RWY 32

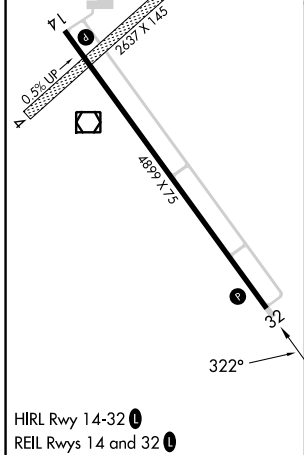
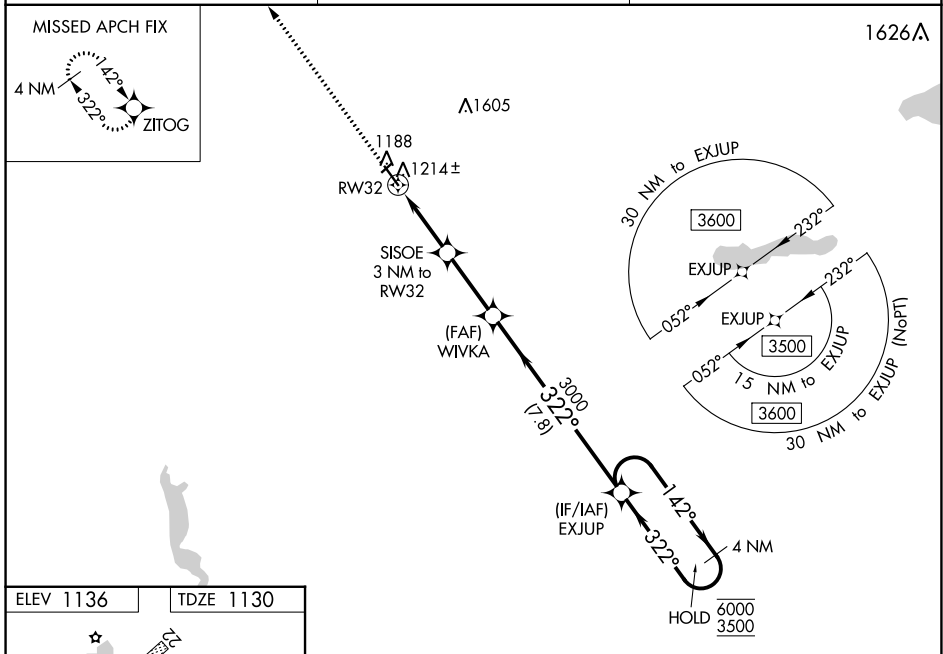
MORRIS MUNI/CHARLIE SCHMIDT FLD (MOX)

RNP APCH-GPS.

**⚠** Circling NA to Rwy 4 and 22. Baro-VNAV and VDP NA when using Benson altimeter setting. For uncompensated Baro-VNAV systems, LNAV/VNAV NA below -17°C or above 54°C. When local altimeter setting not received, use Benson altimeter setting and increase LPV DA to 1388 feet and LNAV/VNAV DA to 1477 feet. Increase all MDAs 60 feet and visibility LNAV Cat C 1/8 SM and visibility Circling Cat C 1/4 SM.

MISSED APPROACH: Climb to 3000 direct ZITOG and hold.

AWOS-3PT <b>118.6</b>	MINNEAPOLIS CENTER <b>126.1 269.2</b>	UNICOM <b>122.8 (CTAF) 1</b>
--------------------------	--	---------------------------------



3000	ZITOG	SISOE 3 NM to RW32	WIVKA 3000	EXJUP	4 NM Holding Pattern
↑	⬠	1 NM to RW32	322°	322°	6000 3500
		2100	3000		GP 3.00° TCH 40
		1 NM	2 NM	2.8 NM	7.8 NM
CATEGORY	A	B	C	D	
LPV DA		1330-1	200 (200-1)		NA
LNAV/VNAV DA		1419-1	289 (300-1)		NA
LNAV MDA		1480-1	350 (400-1)		NA
CIRCLING	1560-1 424 (500-1)	1600-1 464 (500-1)	1860-2 724 (800-2)		NA

NC-1, 11 JUL 2024 to 08 AUG 2024

NC-1, 11 JUL 2024 to 08 AUG 2024