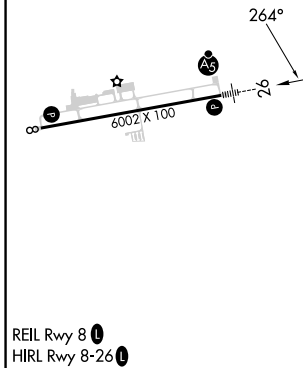
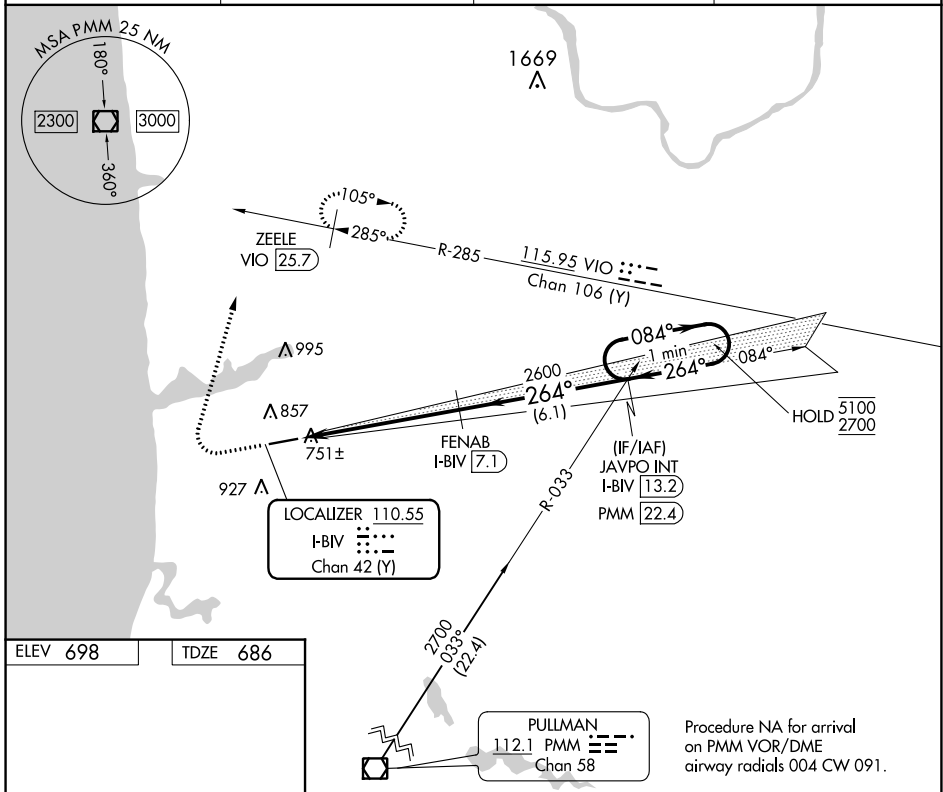


LOC/DME I-BIV 110.55 Chan 42 (Y)	APP CRS 264°	Rwy Idg TDZE Apt Elev	6002 686 698
--	------------------------	-----------------------------	---

ILS or LOC RWY 26

WEST MICHIGAN RGNL (BIV)

DME required. ▼ ▲ NA		MALSRL ▲ 	MISSED APPROACH: Climb to 1500 then climbing right turn to 2600 on heading 020° and VIO VOR/DME R-285 to ZEELE/VIO 25.7 DME and hold.	
ASOS 119.025	GREAT LAKES APP CON* 133.825 290.35	CLNC DEL 123.95	UNICOM 123.05 (CTAF) 0	



	1500	2600	ZEELE VIO R-285	FENAB I-BIV 7.1	JAVPO INT I-BIV 13.2	One Minute Holding Pattern
	↑	↘	VIO R-285	I-BIV 2.1	I-BIV 1.2	2600 264° 084° 5100/2700
	*LOC only		*I-BIV 2.1		I-BIV 1.2	GS 3.00° TCH 32
	0.9 NM		5 NM		6.1 NM	
CATEGORY	A	B	C	D		
S-ILS 26	886-1/2		200 (200-1/2)		NA	
S-LOC 26	1020-1/2		334 (400-1/2)		NA	
CIRCLING	1200-1 502 (600-1)	1240-1 542 (600-1)	1240-1 1/2 542 (600-1 1/2)	NA		

EC-1, 11 JUL 2024 to 08 AUG 2024

EC-1, 11 JUL 2024 to 08 AUG 2024