

VORTAC LTS <b>109.8</b> Chan <b>35</b>	APP CRS <b>122°</b>	Rwy Idg N/A TDZE N/A Apt Elev <b>1433</b>
----------------------------------------------	------------------------	----------------------------------------------------------

# VOR-A

ALTUS/QUARTZ MOUNTAIN RGNL (A.X.S)

**⚠** When local altimeter setting not received, use Hobart Rgnl altimeter setting and increase all MDA 80 feet. Increase Circling Cat C visibility ¼ mile.

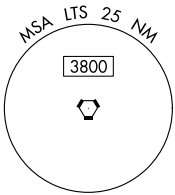
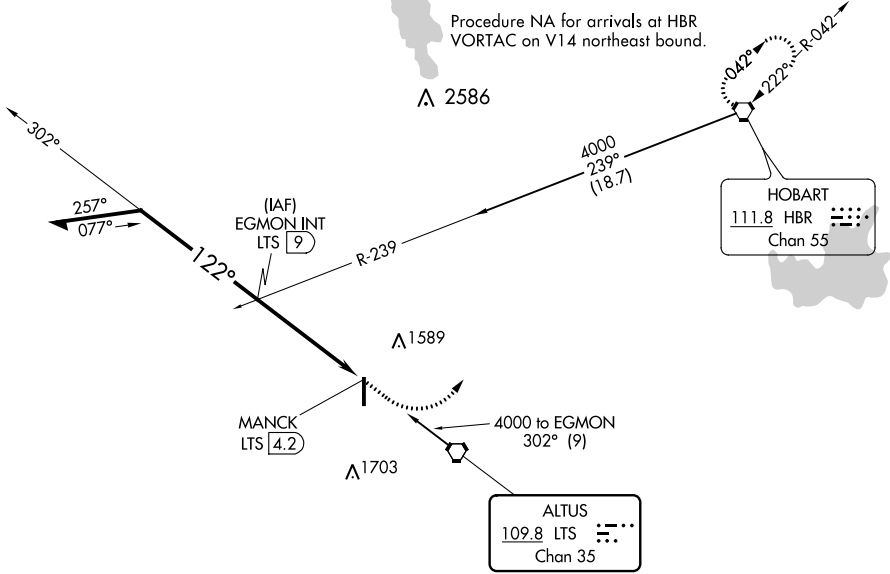
**MISSED APPROACH:** Climb to 2500 then climbing left turn to 4000 direct HBR VORTAC and hold.

AWOS-3PT  
**118.825**

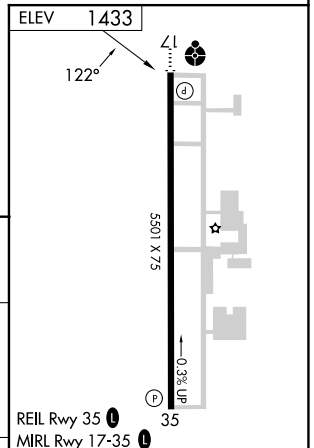
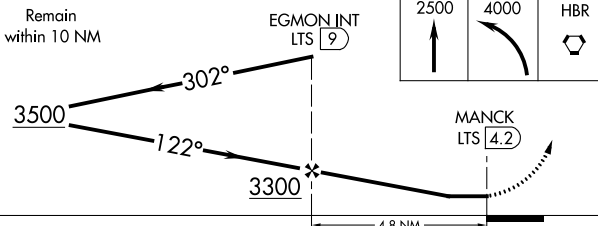
ALTUS APP CON\*  
**125.1 353.7**

UNICOM  
**122.8 (CTAF) 0**

Procedure NA for arrivals at HBR VORTAC on V14 northeast bound.



Remain within 10 NM



CATEGORY	A	B	C	D	FAF to MAP 4.8 NM					
<b>C</b> CIRCLING	1920-1	487 (500-1)	2020-1½ 587 (600-1½)	NA	Knots	60	90	120	150	180
					Min:Sec	4:48	3:12	2:24	1:55	1:36