

(WNGSS1.WNGSS) 20086

WNGSS ONE DEPARTURE (RNAV)

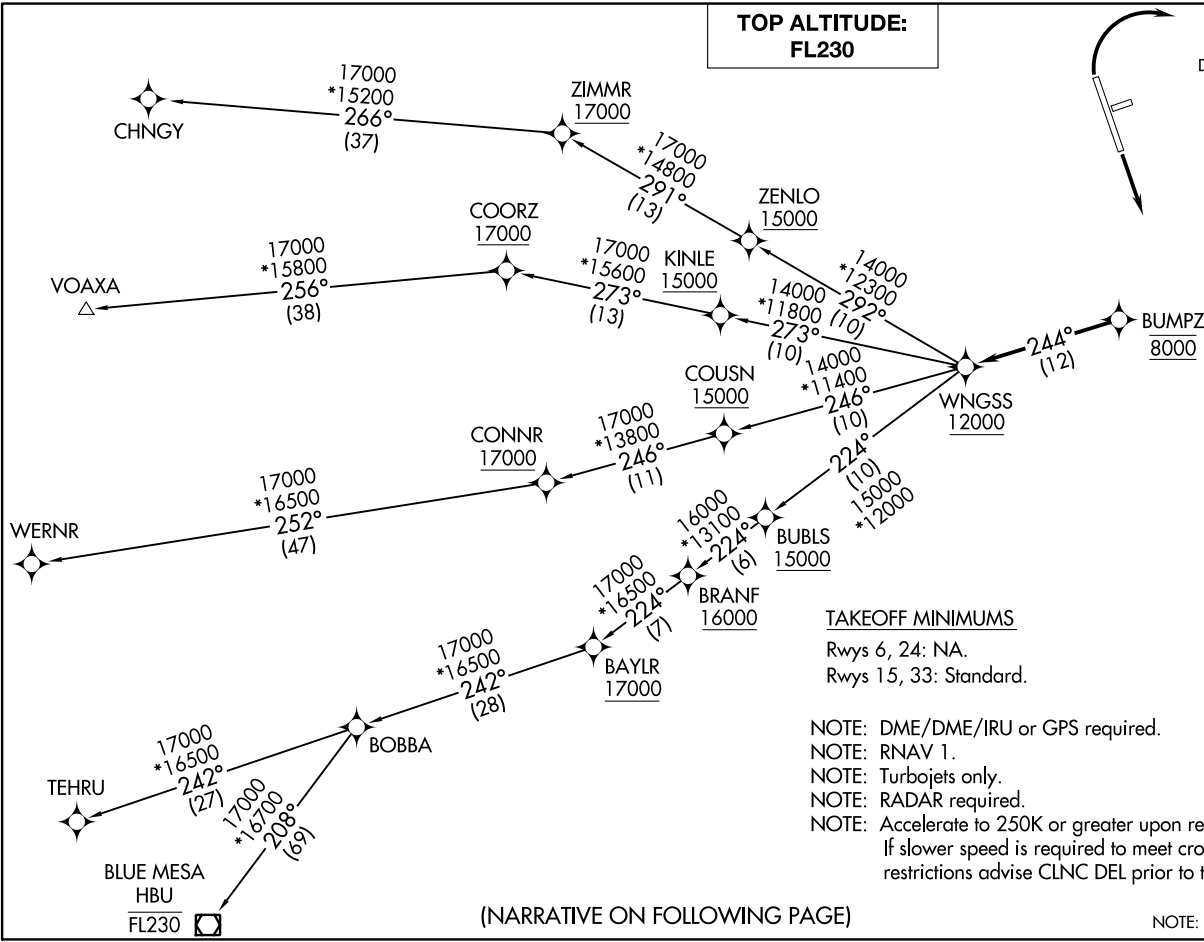
A1-5677 (FAA)

NORTHERN COLORADO RGNL (FNTL)  
FORT COLLINS/LOVELAND, COLORADO

CLNC DEL 120.25  
DENVER DEP CON 134.85 251.125



**TOP ALTITUDE:  
FL230**



**TAKEOFF MINIMUMS**  
Rwys 6, 24: NA.  
Rwys 15, 33: Standard.

NOTE: DME/DME/IRU or GPS required.  
NOTE: RNAV 1.  
NOTE: Turbojets only.  
NOTE: RADAR required.  
NOTE: Accelerate to 250K or greater upon reaching 10000.  
If slower speed is required to meet crossing restrictions advise CLNC DEL prior to taxi.

(NARRATIVE ON FOLLOWING PAGE)

NOTE: Chart not to scale.

WNGSS ONE DEPARTURE (RNAV)  
(WNGSS1.WNGSS) 26MARCH

FORT COLLINS/LOVELAND, COLORADO  
NORTHERN COLORADO RGNL (FNTL)



DEPARTURE ROUTE DESCRIPTION

TAKEOFF RUNWAY 15: Climb on a heading between 350° CW 180° as assigned by ATC. Thence. . . .

TAKEOFF RUNWAY 33: Climbing right turn on a heading between 350° CW 150° as assigned by ATC. Thence. . . .

. . . .expect RADAR vectors to cross BUMPZ at 8000 then on track 244° to cross WNGSS at or above 12000 then on (transition) maintain FL230 or filed lower altitude. Expect higher filed altitude ten minutes after departure.

BLUE MESA TRANSITION (WNGSS1.HBU)

CHNGY TRANSITION (WNGSS1.CHNGY)

TEHRU TRANSITION (WNGSS1.TEHRU)

VOAXA TRANSITION (WNGSS1.VOAXA)

WERNR TRANSITION (WNGSS1.WERNR)

SW-1, 11 JUL 2024 to 08 AUG 2024

SW-1, 11 JUL 2024 to 08 AUG 2024