

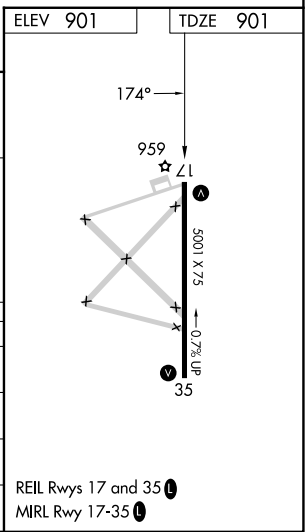
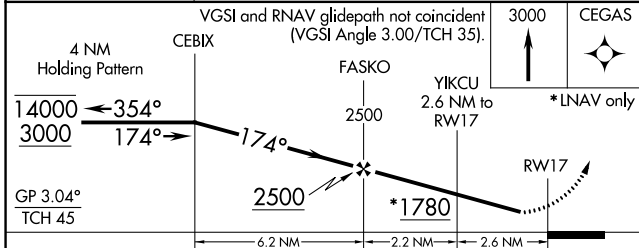
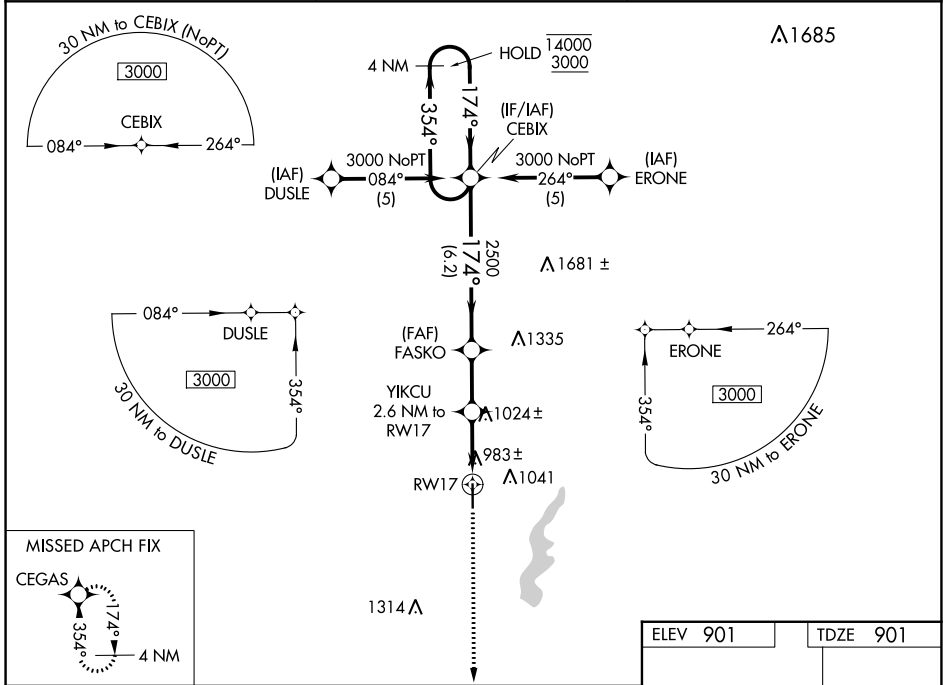
WAAS CH <b>86508</b> <b>W17A</b>	APP CRS <b>174°</b>	Rwy Idg TDZE Apt Elev	<b>5001</b> <b>901</b> <b>901</b>
--	------------------------	-----------------------------	---

# RNAV (GPS) RWY 17

TRI-CITY (PPF)

RNP APCH.	MISSED APPROACH: Climb to 3000 direct CEGAS and hold.
<p>▼ Procedure NA at night. Rwy 17 helicopter visibility reduction below 1 SM NA. For uncompensated Baro-VNAV systems, procedure NA below -16°C or above 54°C.</p> <p>▲</p>	

ASOS <b>118.175</b>	KANSAS CITY CENTER <b>128.6 282.325</b>	UNICOM <b>123.0 (CTAF)</b>
------------------------	--	-------------------------------



CATEGORY	A	B	C	D
LPV DA	1194-1	293 (300-1)		NA
LNAV/VNAV DA	1256-1¼	355 (400-1¼)		NA
LNAV MDA	1360-1	459 (500-1)	1360-1⅜ 459 (500-1⅜)	NA
CIRCLING	1420-1 519 (600-1)	1440-1 539 (600-1)	1440-1½ 539 (600-1½)	NA

NC-2, 11 JUL 2024 to 08 AUG 2024

NC-2, 11 JUL 2024 to 08 AUG 2024