

(TIFTO8.MCI) 23278

TIFTO EIGHT DEPARTURE

AL-5687 (FAA)

JOHNSON COUNTY EXEC (OJC)

OLATHE, KANSAS

**TOP ALTITUDE:
10000**

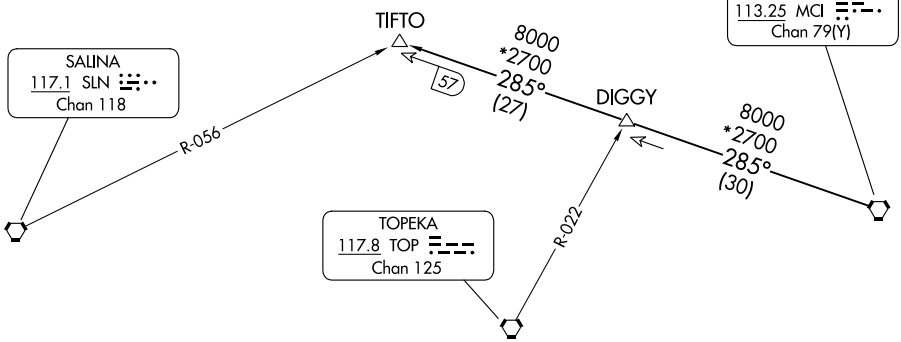
RADAR and DME required.

KANSAS CITY DEP CON
118.9 251.075
ATIS
119.35

SALINA
117.1 SLN
Chan 118

TOPEKA
117.8 TOP
Chan 125

KANSAS CITY
113.25 MCI
Chan 79(Y)



TAKEOFF MINIMUMS
Rwys 18, 36: Standard.

NOTE: Chart not to scale

DEPARTURE ROUTE DESCRIPTION

TAKEOFF ALL RUNWAYS: Climb on assigned heading for RADAR vectors to appropriate route. Maintain 10000, expect filed altitude 10 minutes after departure.

TIFTO TRANSITION (TIFTO8.TIFTO): From over MCI VORTAC on MCI R-285 to TIFTO.

TIFTO EIGHT DEPARTURE

(TIFTO8.MCI) 05OCT23

OLATHE, KANSAS
JOHNSON COUNTY EXEC (OJC)

NC-2, 11 JUL 2024 to 08 AUG 2024

NC-2, 11 JUL 2024 to 08 AUG 2024