

WAAS CH <b>99734</b> <b>W02A</b>	APP CRS <b>016°</b>	Rwy Idg <b>3346</b> TDZE <b>162</b> Apt Elev <b>162</b>
--	------------------------	---

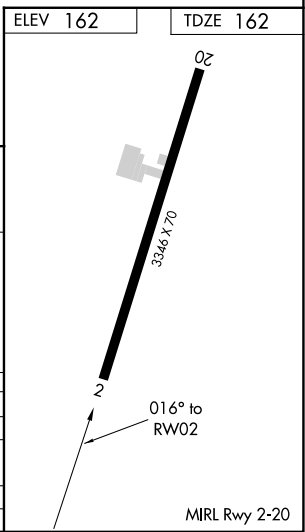
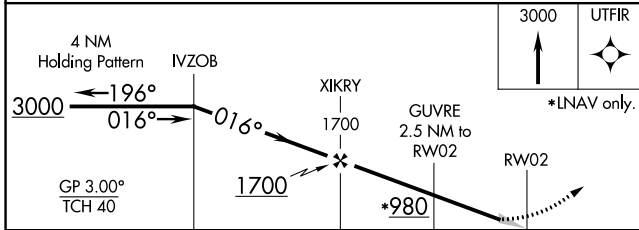
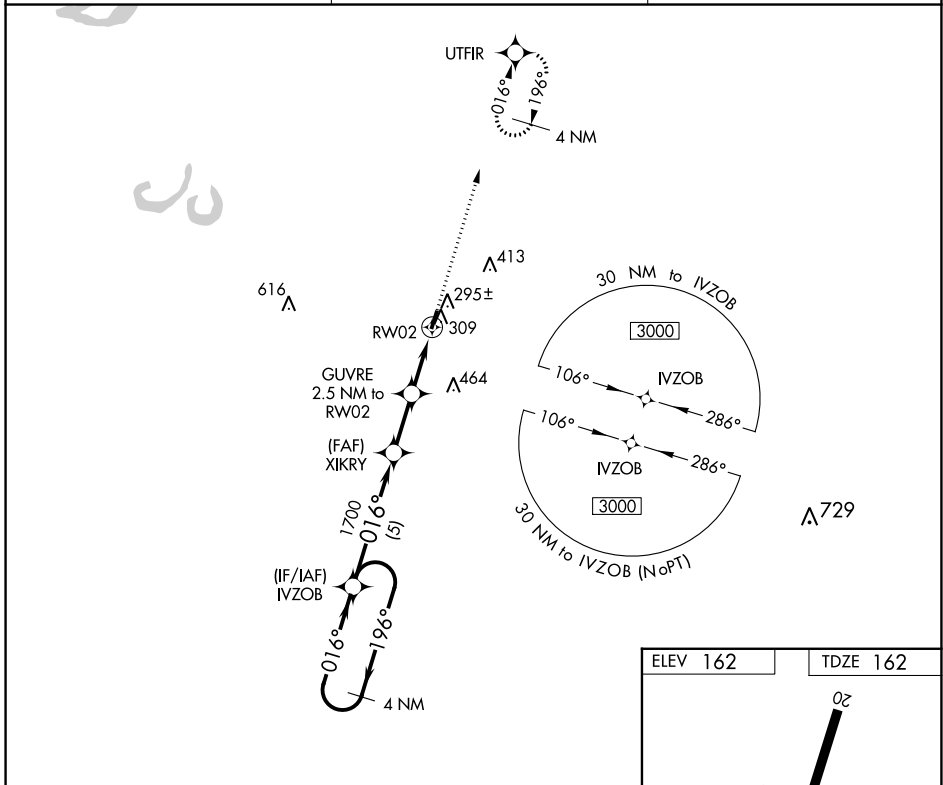
# RNAV (GPS) RWY 2

SELFS (MIMS)

**NA** Circling to Rwy 20 NA at night. Baro-VNAV NA. DME/DME RNP-0.3 NA. Use Clarksdale altimeter setting; when not received, use Tunica altimeter setting and increase all DA 39 feet and all MDA 40 feet; increase LPV all Cats visibility to 1 1/2 mile and LNAV/VNAV all Cats visibility to 1 3/8 mile.

**MISSED APPROACH:**  
Climb to 3000 direct UTFIR and hold, continue climb-in-hold to 3000.

CKM AWOS-3 <b>120.675</b>	MEMPHIS CENTER <b>135.3 335.8</b>	CTAF <b>122.9</b>
------------------------------	--------------------------------------	----------------------



CATEGORY	A	B	C	D
LPV DA	441-1	279 (300-1)		NA
LNAV/VNAV DA	608-1 1/2	446 (500-1 1/2)		NA
LNAV MDA	600-1	438 (500-1)		NA
<b>C</b> CIRCLING	680-1	518 (600-1)		NA

SC-4, 11 JUL 2024 to 08 AUG 2024

SC-4, 11 JUL 2024 to 08 AUG 2024