

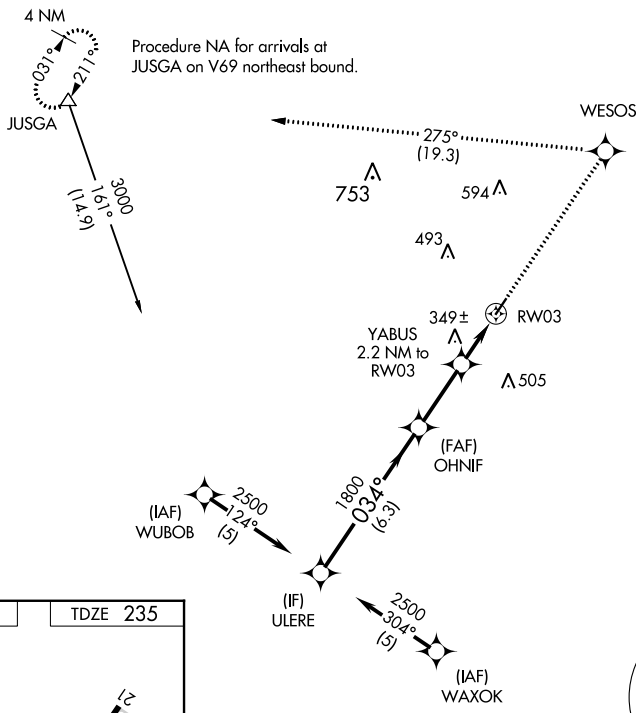
APP CRS 034°	Rwy Idg 3829
	TDZE 235
	Apt Elev 235

RNAV (GPS) RWY 3

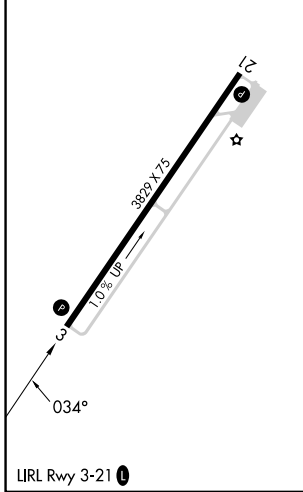
WARREN MUNI (3M9)

RNP APCH - GPS.	MISSED APPROACH: Climb to 3000 direct WESOS and on track 275° to JUSGA and hold.
▼ ▲ NA	Use Monticello altimeter setting. Procedure NA at night.

LLQ ASOS 133.325	MEMPHIS CENTER 135.875 269.35	CTAF 122.9 0
----------------------------	---	------------------------



ELEV 235	TDZE 235
----------	----------



VGSIs and descent angles not coincident (VGSi Angle 3.00/TCH 40).			
ULERE	OHNIF	YABUS	RW03
2500	1800	920	
6.3 NM		2.7 NM	
A		B	
C		D	
660-1		425 (500-1)	
660-1¼		425 (500-1¼)	
NA		NA	

SC-1, 11 JUL 2024 to 08 AUG 2024

SC-1, 11 JUL 2024 to 08 AUG 2024