


WAAS CH 69515 W24A	APP CRS 235°	Rwy Idg TDZE 681 Apt Elev 681
--	------------------------	---

RNAV (GPS) RWY 24

MAURY COUNTY RGNL (MRC)

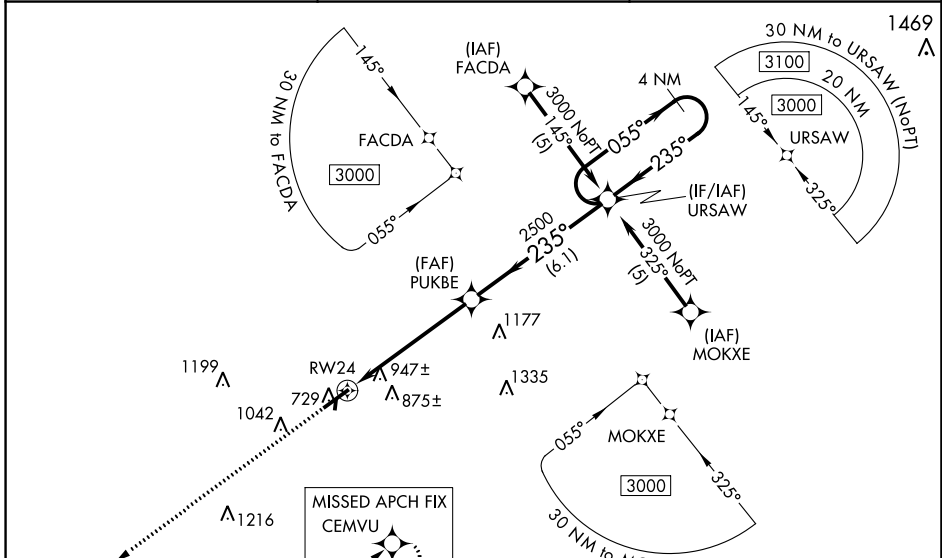
RNP APCH.

⚠ Inop table does not apply to LNAV/VNAV Cats A, B, and C and LNAV Cat C. For uncompensated Baro-VNAV systems, LNAV/VNAV NA below -16°C or above 47°C. Rwy 24 helicopter visibility reduction below ¼ SM NA. When local altimeter setting not received, use Nashville Intl altimeter setting and increase LPV DA to 1090 feet and LNAV/VNAV DA to 1438 feet and increase all MDA 120 feet; increase LPV and LNAV/VNAV all Cats visibility ½ SM, and LNAV Cats C and D visibility ¼ SM, and increase Circling Cat C visibility ½ SM. Baro-VNAV and VDP NA when using Nashville Intl altimeter setting.

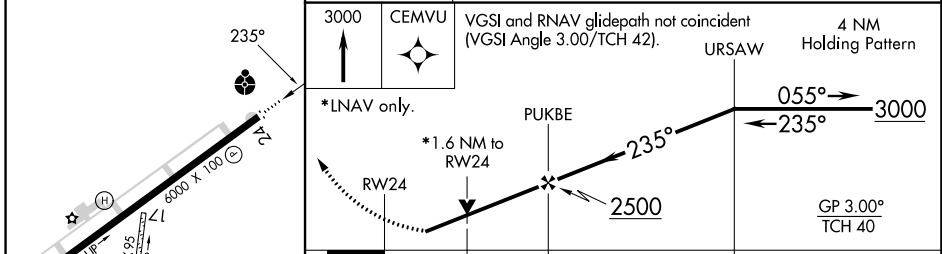
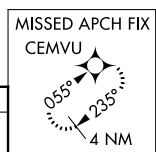
ODALS 

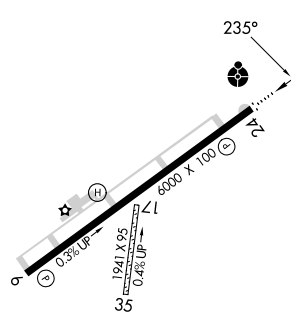
MISSED APPROACH: Climb to 3000 direct CEMVU and hold.

AWOS-3 128.625	MEMPHIS CENTER 125.85 379.25	UNICOM 122.8 (CTAF) 0
--------------------------	--	---------------------------------



ELEV 681	D	TDZE 681
-----------------	----------	-----------------



MRL Rwy 6-24 REIL Rwy 6 REIL Rwy 24 0		*LNAV only. RWY 24 *1.6 NM to RWY 24 PUKBE URSAW 3000 2500 055° 235°	VGSi and RNAV glidepath not coincident (VGSi Angle 3.00/TCH 42). 4 NM Holding Pattern		
	CATEGORY	A	B	C	D
	LPV DA	981-1 300 (300-1)			
	LNAV/ VNAV DA	1329-2¼ 648 (700-2¼)			
	LNAV MDA	1220-¾ 539 (600-¾)	1220-1½ 539 (600-1½)	1220-1¾ 539 (600-1¾)	1220-1¾ 539 (600-1¾)
CIRCLING	1320-1 639 (700-1)	1360-1 679 (700-1)	1380-2 699 (700-2)	1620-3 939 (1000-3)	

SE-1, 11 JUL 2024 to 08 AUG 2024

SE-1, 11 JUL 2024 to 08 AUG 2024