

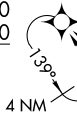
DUNNN FIVE ARRIVAL (RNAV) (DUNNN.DUNNN5) 14JUL22

DUNNN FIVE ARRIVAL (RNAV) Transition Routes

DENVER, COLORADO

See following page for Arrival Routes

DUNNN  
FL220  
FL190



14000  
\*8100  
302°  
(24)

14000  
\*8100  
319°  
(24)

LAYLA

XPAIN

17000  
\*8100  
306°  
(45)

CAARS

17000  
\*8100  
259°  
(24)

MORSN  
FL300

FL190  
\*8100  
260°  
(61)

FRAAY



RNAV 1 - DME/DME/IRU or GPS.

RADAR required.

- DENVER CENTER 133.4 377.175
- SPRINGS APP CON 124.0 257.875
- DENVER APP CON 128.45 251.075
- APA ATIS 120.3
- BJC ATIS 126.25
- CENTENNIAL TOWER 118.9
- METRO TOWER\* 118.6 233.7

NOTE: Jet aircraft only.

NOTE: Expect runway assignment from DENVER TRACON upon initial contact.

NOTE: Chart not to scale.

CAARS TRANSITION (CAARS.DUNNN5)

FRAAY TRANSITION (FRAAY.DUNNN5)

(CONTINUED ON FOLLOWING PAGE)

(DUNNN.DUNNN5) 22195

Transition Routes

DENVER, COLORADO

AL-5715 (FAA)

(DUNNN.DUNNN5) 22195

AL-5715 (FAA)

# DUNNN FIVE ARRIVAL (RNAV) Arrival Routes

DENVER, COLORADO

ROCKY MOUNTAIN METRO

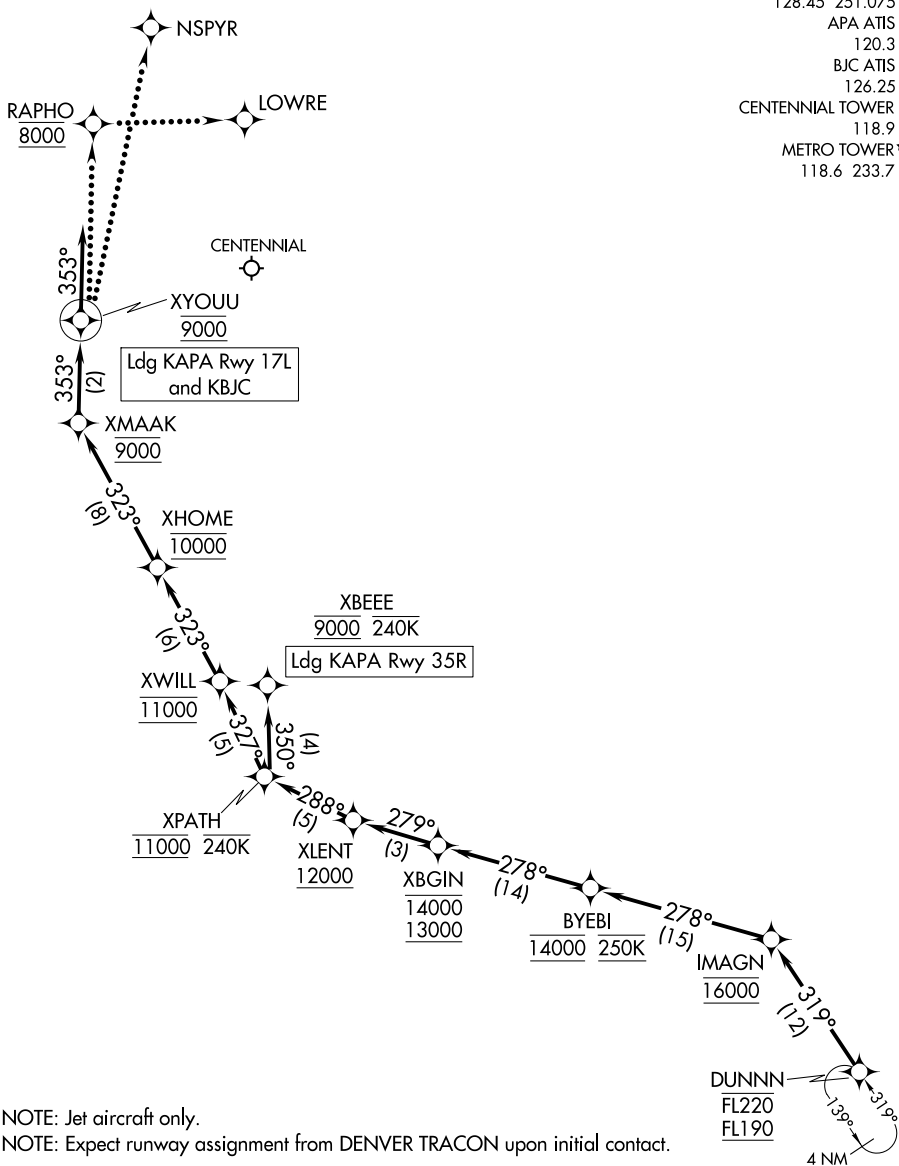
RNAV 1 - DME/DME/IRU or GPS.

RADAR required.

DENVER CENTER  
 133.4 377.175  
 SPRINGS APP CON  
 124.0 257.875  
 DENVER APP CON  
 128.45 251.075  
 APA ATIS  
 120.3  
 BJC ATIS  
 126.25  
 CENTENNIAL TOWER  
 118.9  
 METRO TOWER\*  
 118.6 233.7

SW-1, 11 JUL 2024 to 08 AUG 2024

SW-1, 11 JUL 2024 to 08 AUG 2024



NOTE: Jet aircraft only.

NOTE: Expect runway assignment from DENVER TRACON upon initial contact.

NOTE: Chart not to scale.

(NARRATIVE ON FOLLOWING PAGE)

# DUNNN FIVE ARRIVAL (RNAV) Arrival Routes

DENVER, COLORADO

(DUNNN.DUNNN5) 14JUL22

ARRIVAL ROUTE DESCRIPTION

KAPA: From DUNNN on track 319° to cross IMAGN at 16000, then on track 278° to cross BYEBI at 14000 and at 250K.

LANDING KAPA RUNWAY 17L: From BYEBI on track 278° to cross XBGIN between 13000 and 14000, then on track 279° to cross XLENT at or above 12000, then on track 288° to cross XPATH at 11000 and at or below 240K, then on track 327° to cross XWILL at 11000, then on track 323° to cross XHOME at 10000, then on track 323° to cross XMAAK at 9000, then on track 353° to cross XYOUU at 9000, then on track 353°. Expect RADAR vectors to final approach course.

LANDING KAPA RUNWAY 35R: From BYEBI on track 278° to cross XBGIN between 13000 and 14000, then on track 279° to cross XLENT at or above 12000, then on track 288° to cross XPATH at 11000 and at or below 240K, then on track 350° to cross XBEEE at 9000 and at or below 240K. Expect ILS or LOC RWY 35R approach or as assigned by ATC.

LANDING KBJC: From DUNNN on track 319° to cross IMAGN at 16000, then on track 278° to cross BYEBI at 14000 and at 250K, then on track 278° to cross XBGIN between 13000 and 14000, then on track 279° to cross XLENT at or above 12000, then on track 288° to cross XPATH at 11000 and at or below 240K, then on track 327° to cross XWILL at 11000, then on track 323° to cross XHOME at 10000, then on track 323° to cross XMAAK at 9000, then on track 353° to cross XYOUU at 9000, then on track 353°. Expect RADAR vectors to final approach course.

LOST COMMUNICATIONS

LANDING CENTENNIAL:

From over XYOUU- proceed direct to RAPHO and cross at 8000, then direct LOWRE and execute the RNAV (GPS) RWY 17L approach.

From over XBEEE- execute the RNAV (GPS) RWY 35R approach.

Non-GPS equipped aircraft- execute the ILS or LOC RWY 35R approach.

LANDING ROCKY MOUNTAIN METRO:

From over XYOUU- proceed to NSPYR execute the ILS or LOC RWY 30R approach.

SW-1, 11 JUL 2024 to 08 AUG 2024

SW-1, 11 JUL 2024 to 08 AUG 2024