

DENVER, COLORADO

AL-5715 (FAA)

24193

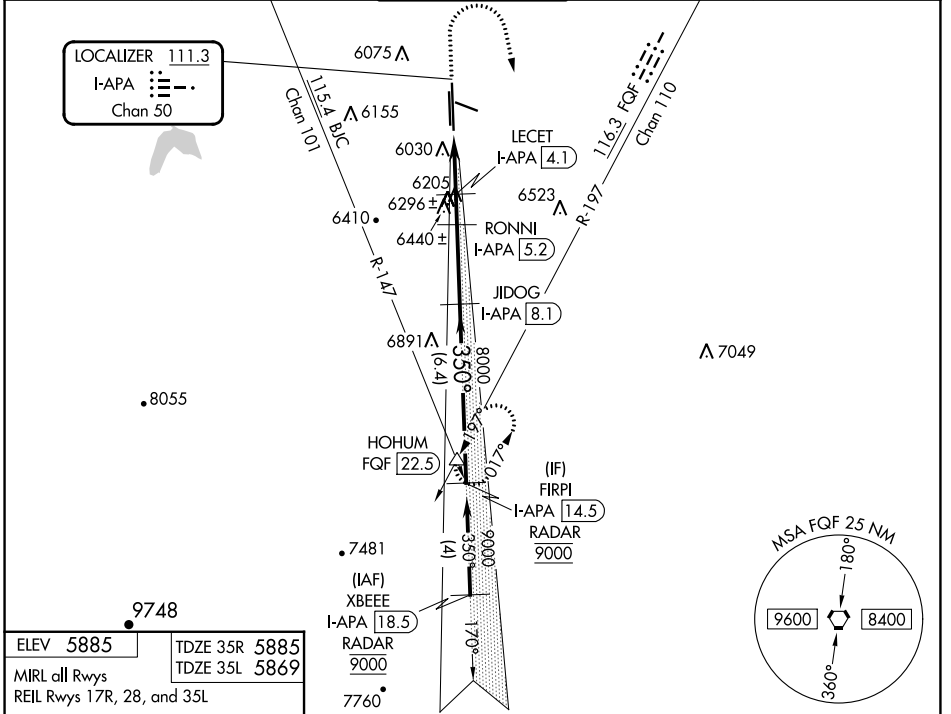
LOC/DME I-APA <b>111.3</b> Chan <b>50</b>	APP CRS <b>350°</b>	Rwy Idg <b>10001</b> TDZE <b>5885</b> Apt Elev <b>5885</b>	<b>35R</b> <b>35L</b> <b>7001</b> <b>5869</b> <b>5885</b> <b>5885</b>
-------------------------------------------------	------------------------	---------------------------------------------------------------------------	--------------------------------------------------------------------------------------

# ILS or LOC RWY 35R

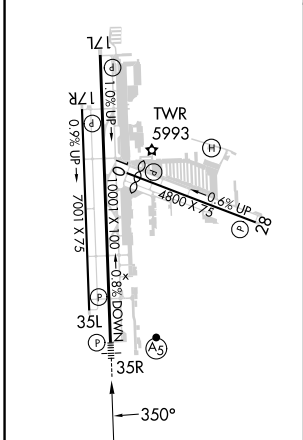
CENTENNIAL (APA)

DME required for LOC only. RADAR required for procedure entry.		MALSR Rwy 35R 	MISSED APPROACH: Climb to 7400 then climbing right turn to 9200 on heading 160° and FQF VORTAC R-197 to HOHUM INT/FQF 22.5 DME and hold.
Rwy 35L helicopter visibility reduction below 1 SM NA. For inop ALS, increase S-LOC 35R Cat C/D visibility to 1½ SM. Sidestep and Circling Rwy 35L NA at night.			

ATIS <b>120.3</b>	DENVER APP CON <b>132.75 269.3</b>	<b>CENTENNIAL TOWER</b> <b>118.9</b>	GND CON <b>121.8</b>	CLNC DEL <b>128.6</b>
----------------------	---------------------------------------	-----------------------------------------	-------------------------	--------------------------



ELEV <b>5885</b>	TDZE 35R <b>5885</b>
MIRL all Rwys	TDZE 35L <b>5869</b>
REIL Rws 17R, 28, and 35L	



7400	9200	FQF R-197	HOHUM $\Delta$	JIDOG I-APA [8.1]	FIRPI I-APA [14.5] RADAR
hdg 160°					
CATEGORY	A	B	C	D	
S-ILS 35R	6085-½ 200 (200-½)				
S-LOC 35R	6460-½	575 (600-½)	6460-1¼		575 (600-1¼)
SIDESTEP 35L	6460-1	591 (600-1)	6460-1½	6460-2 591 (600-2)	
CIRCLING	6460-1 575 (600-1)	6540-1 655 (700-1)	6740-2½ 855 (900-2½)	6760-2¾ 875 (900-2¾)	

DENVER, COLORADO  
Amdt 11B 23FEB23

39°34'N-104°51'W

# CENTENNIAL (APA)

## ILS or LOC RWY 35R

SW-1, 11 JUL 2024 to 08 AUG 2024

SW-1, 11 JUL 2024 to 08 AUG 2024