

(ZOMBZ.ZOMBZ5) 07OCT21

ZOMBZ FIVE ARRIVAL (RNAV)

DENVER APP CON  
 128.45 251.075  
 APA ATIS  
 120.3  
 CFO ATIS  
 119.025  
 CENTENNIAL TOWER  
 118.9  
 SPACE PORT TOWER\*  
 120.2

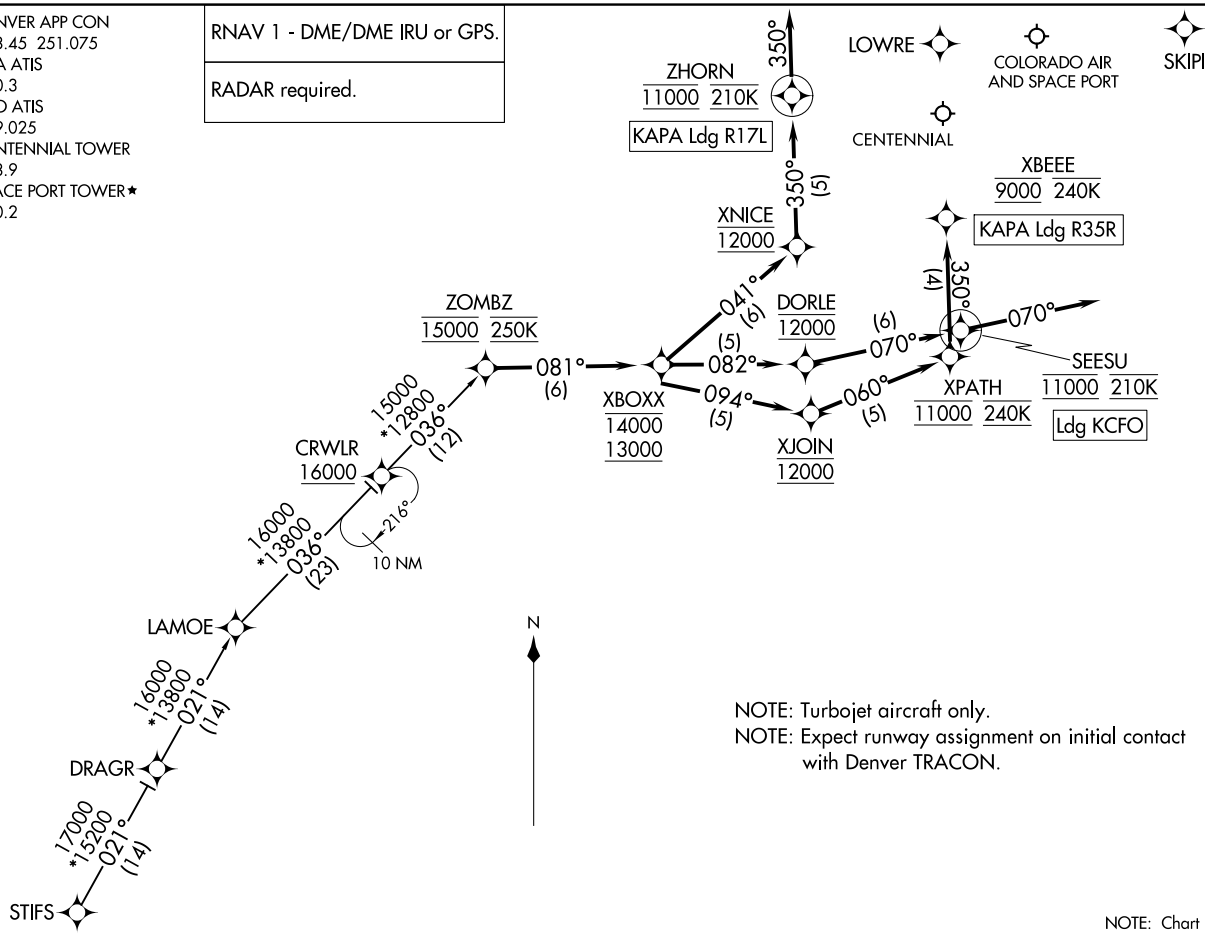
RNAV 1 - DME/DME IRU or GPS.

RADAR required.

(ZOMBZ.ZOMBZ5) 21308

AL-5715 (FAA)

DENVER, COLORADO



ARRIVAL ROUTE DESCRIPTION

STIFS TRANSITION (STIFS.ZOMBZ5)

LANDING KAPA RUNWAY 17L: From ZOMBZ on track 081° to cross XBOXX between 13000 and 14000, then on track 041° to cross XNICE at 12000, then on track 350° to cross ZHORN at 11000 and at 210K, then on track 350°. Expect RADAR vectors to final approach course.

LANDING KAPA RUNWAY 35R: From ZOMBZ on track 081° to cross XBOXX between 13000 and 14000, then on track 094° to cross XJOIN at 12000, then on track 060° to cross XPATH at 11000 and at 240K, then on track 350° to cross XBEEE at 9000 and at or below 240K. Expect ILS or LOC RWY 35R approach or as assigned by ATC.

LANDING KCFO: From ZOMBZ on track 081° to cross XBOXX between 13000 and 14000, then on track 082° to cross DORLE at 12000, then on track 070° to cross SEESU at 11000 and at 210K, then on track 070°. Expect RADAR vectors to final approach course.

LOST COMMUNICATIONS

In the event of lost communications prior to runway transition assignment, when KAPA is landing north, execute the ILS RWY 35R approach, when KAPA is landing south, execute the RNAV (GPS) RWY 17L via LOWRE.

LANDING CFO: execute the ILS RWY 26 approach via SKIPI.

SW-1, 11 JUL 2024 to 08 AUG 2024

SW-1, 11 JUL 2024 to 08 AUG 2024