

| | | |
|--|------------------------|---|
| WAAS CH 72619 W18A | APP CRS 183° | Rwy Idg 5404 TDZE 173 Apt Elev 173 |
|--|------------------------|---|

RNAV (GPS) RWY 18

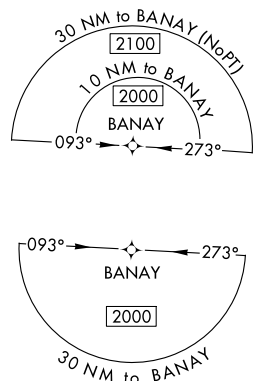
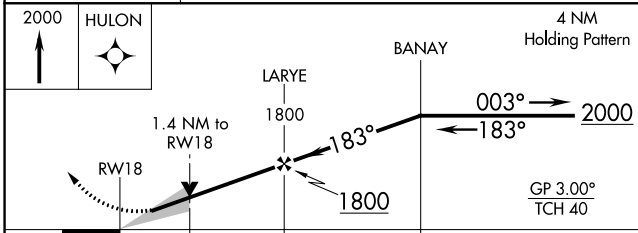
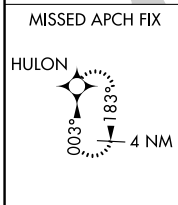
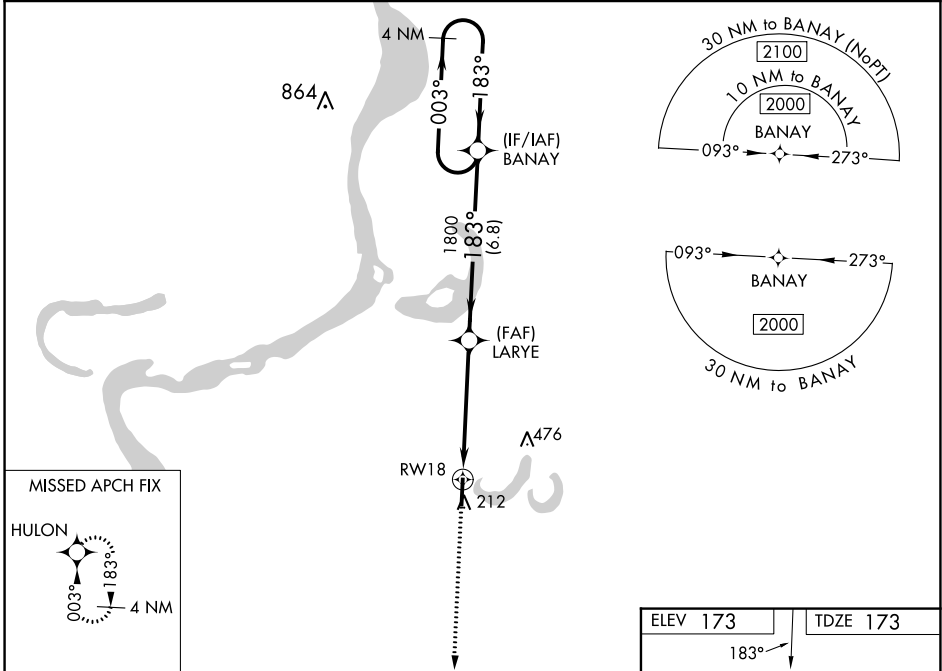
FLETCHER FLD (CKM)

RNP APCH-GPS.

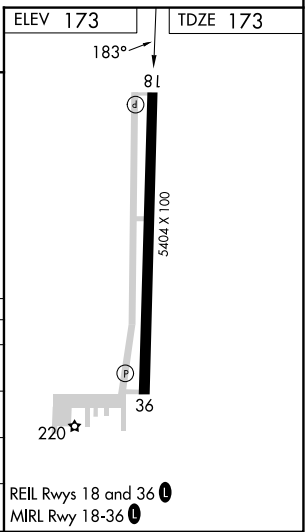
⚠ For uncompensated Baro-VNAV systems, LNAV/VNAV NA below -15°C or above 54°C. Baro-VNAV and VDP NA when using Tunica altimeter setting. When local altimeter setting not received, use Tunica altimeter setting: increase LPV DA to 483 feet, LNAV/VNAV DA to 647 feet and all MDA 60 feet; increase LPV all Cats visibility 1/8 SM, LNAV/VNAV all Cats visibility 1/4 SM, and LNAV Cat C/D visibility 1/8 SM. Circling Rwy 36 NA at night.

MISSED APPROACH:
Climb to 2000 direct HULON and hold.

| | | |
|--------------------------|--------------------------------------|---------------------------------|
| AWOS-3 120.675 | MEMPHIS CENTER 135.3 335.8 | UNICOM 122.8 (CTAF) 0 |
|--------------------------|--------------------------------------|---------------------------------|



| CATEGORY | A | B | C | D |
|-------------------|----------|-------------|----------------------------|----------------------|
| LPV DA | 423-7/8 | | 250 (300-7/8) | |
| LNAV/VNAV DA | 587-13/8 | | 414 (500-13/8) | |
| LNAV MDA | 640-1 | 467 (500-1) | 640-13/8 | 467 (500-13/8) |
| C CIRCLING | 740-1 | 567 (600-1) | 780-13/4 607 (700-13/4) | 780-2 607 (700-2) |



SC-4, 11 JUL 2024 to 08 AUG 2024

SC-4, 11 JUL 2024 to 08 AUG 2024