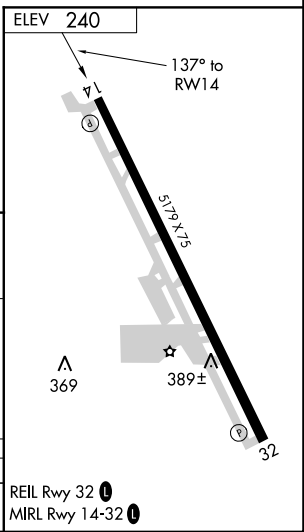
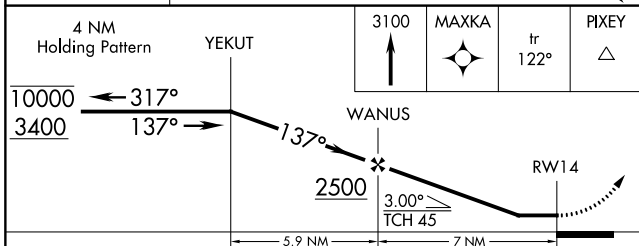
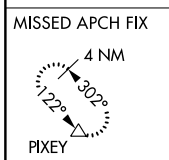
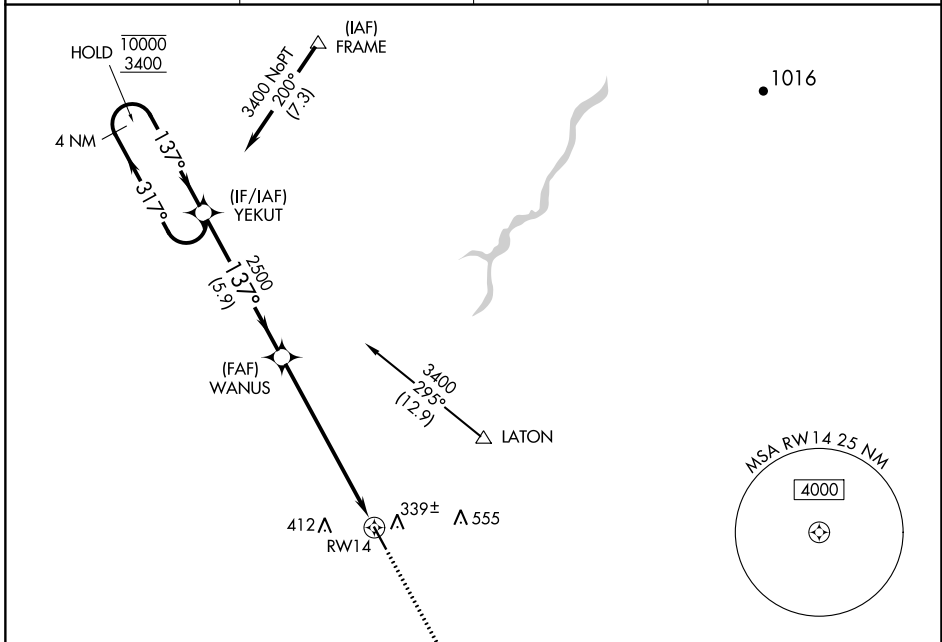


APP CRS 137°	Rwy Idg TDZE Apt Elev	N/A N/A 240
------------------------	-----------------------------	--

RNAV (GPS)-B

HANFORD MUNI (HJO)

RNP APCH. ▼ Circling Rwy 14 NA at night.		MISSED APPROACH: Climb to 3100 direct MAXKA and on track 122° to PIXEY and hold.	
ASOS 134.75	FRESNO APP CON 123.9	CLNC DEL 123.9	UNICOM 122.8 (CTAF) 0



CATEGORY	A	B	C	D
C CIRCLING	760-1	520 (600-1)	760-1½ 520 (600-1½)	NA

REIL Rwy 32 **0**
MIRL Rwy 14-32 **0**

SW-2, 11 JUL 2024 to 08 AUG 2024

SW-2, 11 JUL 2024 to 08 AUG 2024