

WAAS CH <b>81909</b> <b>W35A</b>	APP CRS <b>352°</b>	Rwy Idg TDZE <b>3176</b> Apt Elev <b>3188</b>	<b>5110</b> <b>3176</b> <b>3188</b>
--	------------------------	---	---

# RNAV (GPS) RWY 35

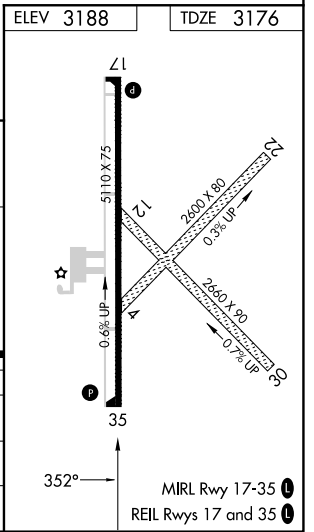
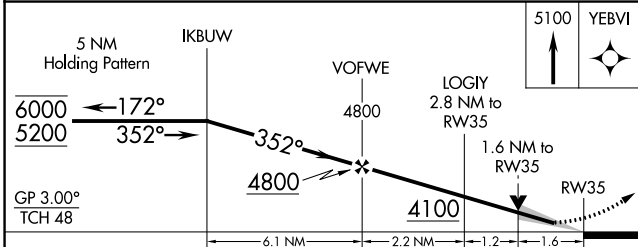
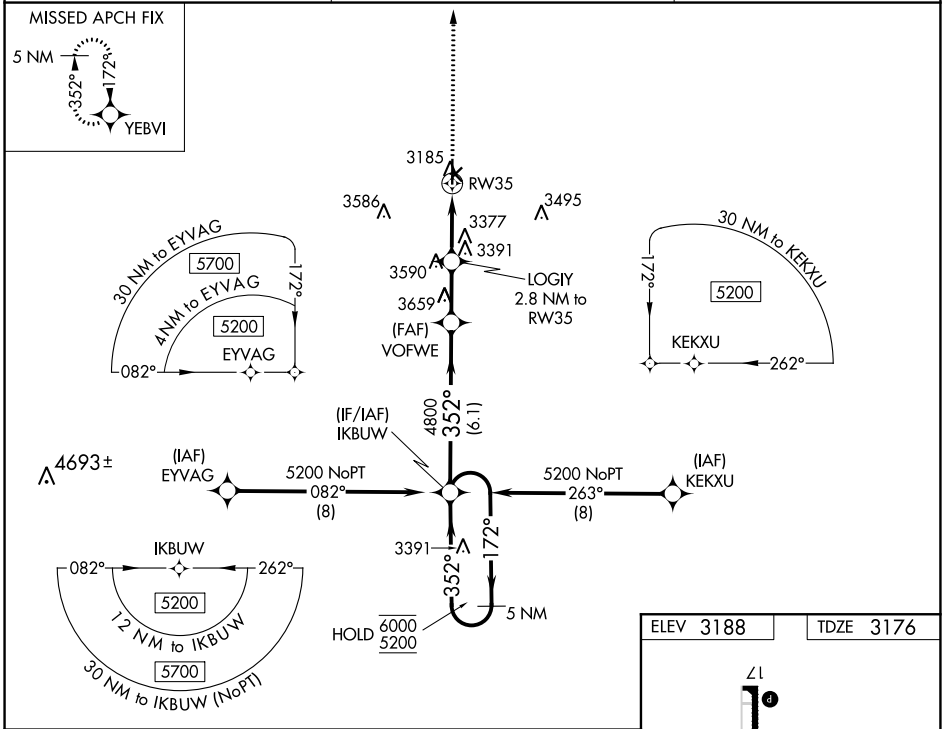
SHALZ FLD (CBK)

RNP APCH-GPS.

Baro-VNAV and VDP NA when using Goodland altimeter setting. For uncompensated Baro-VNAV systems, LNAV/VNAV NA below -21°C or above 54°C. When local altimeter setting not received, use Goodland altimeter setting: increase LPV DA to 3511 feet and visibility ¼ SM, LNAV/VNAV DA to 3561 feet and visibility ⅓ SM; increase all MDAs 140 feet and visibility Cat C ⅓ SM.

MISSED APPROACH:  
Climb to 5100 direct YEBVI and hold.

AWOS-3P <b>118.175</b>	DENVER CENTER <b>132.7 226.675</b>	UNICOM <b>122.8 (CTAF)</b>
---------------------------	---------------------------------------	-------------------------------



CATEGORY	A	B	C	D
LPV DA	3376-¾ 200 (200-¾)			NA
LNAV/VNAV DA	3426-¾ 250 (300-¾)			NA
LNAV MDA	3700-1	524 (600-1)	3700-1½ 524 (600-1½)	NA

NC-2, 11 JUL 2024 to 08 AUG 2024

NC-2, 11 JUL 2024 to 08 AUG 2024