

LOC/DME I-RBW 110.15 Chan 38 (Y)	APP CRS 229°	Rwy ldg TDZE Apt Elev	6002 101 101
---	------------------------	-----------------------------	---

ILS Y or LOC Y RWY 23

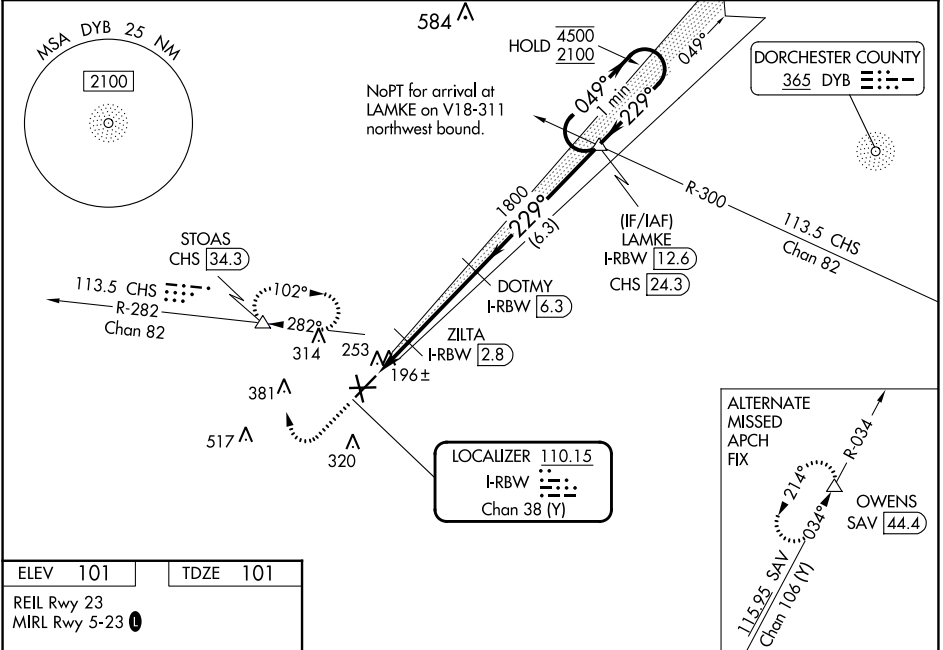
LOWCOUNTRY RGNL (R.B.W)

DME required.

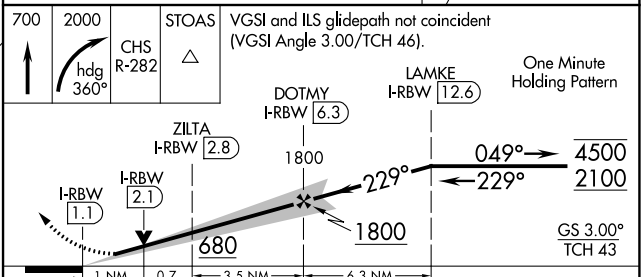
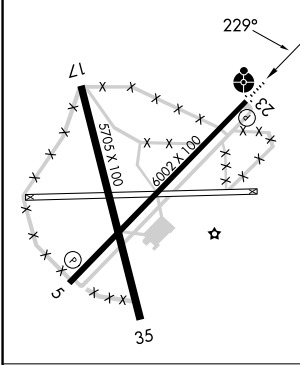
ODALS

MISSED APPROACH: Climb to 700 then climbing right turn to 2000 on heading 360° and CHS VORTAC R-282 to STOAS/CHS VORTAC 34.3 DME and hold, continue climb-in-hold to 2000, or as directed by ATC.

AWOS-3PT 118.725	CHARLESTON APP CON 120.7 306.925	UNICOM 122.8 (CTAF)
----------------------------	--	-------------------------------



ELEV 101	TDZE 101
REIL Rwy 23 MIRL Rwy 5-23	



CATEGORY	A	B	C	D
S-ILS 23	301-¾ 200 (200-¾)			
S-LOC 23	460-¾ 359 (400-¾)		460-⅞ 359 (400-⅞)	
<input checked="" type="checkbox"/> CIRCLING	620-1 519 (600-1)		700-1½ 599 (600-1½) 700-2 599 (600-2)	

FAF to MAP 5.2 NM					
Knots	60	90	120	150	180
Min:Sec	5:12	3:28	2:36	2:05	1:44

SE-2, 11 JUL 2024 to 08 AUG 2024

SE-2, 11 JUL 2024 to 08 AUG 2024