

LOC/DME I-RBW <b>110.15</b> Chan <b>38</b> (Y)	APP CRS <b>229°</b>	Rwy Idg <b>6002</b> TDZE <b>101</b> Apt Elev <b>101</b>
--	------------------------	---

# ILS Z or LOC Z RWY 23

LOWCOUNTRY RGNL (R.BW)

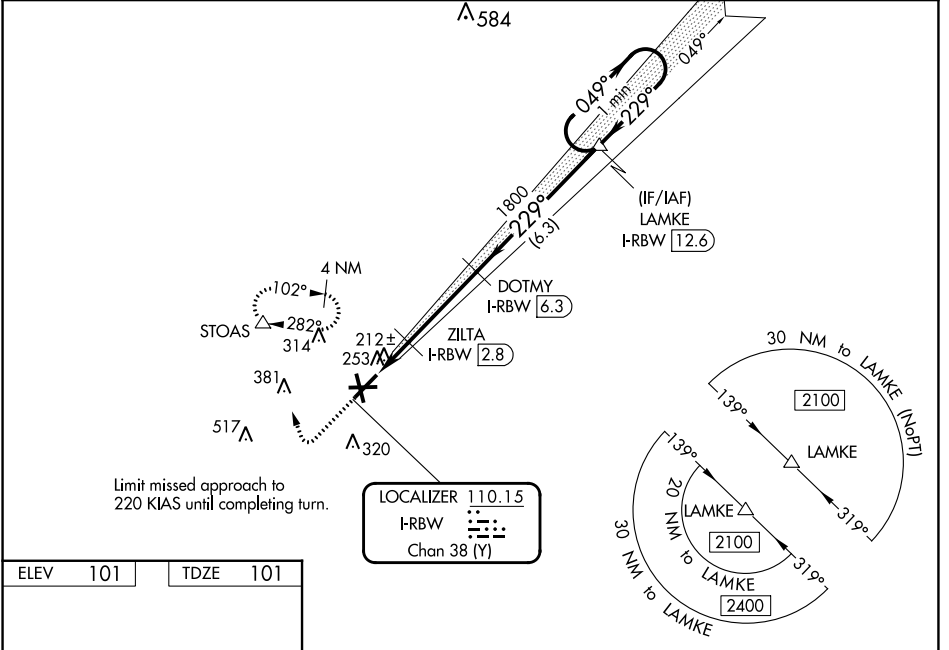
**▽** Inop table does not apply to S-LOC 23 Cat C. GPS and DME required. Helicopter visibility reduction below 3/4 SM NA. VDP NA with Charleston AFB/Intl altimeter setting. When local altimeter setting not received, use Charleston AFB/Intl altimeter setting: increase S-ILS 23 DA to 379 feet and all MDA 80 feet; increase S-LOC 23 Cats C/D visibility 1/8 mile and Circling Cat C visibility 1/2 mile and Circling Cat D visibility 1/4 mile. For inop ODALS when using Charleston AFB/Intl altimeter setting, increase S-ILS 23 all Cats visibility to 1/8 mile and S-LOC 23 Cat D visibility to 1 1/8 mile.

**△ NA**

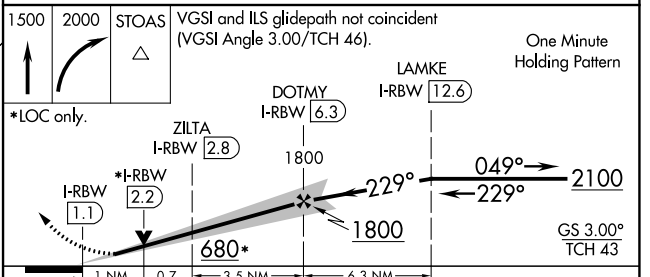
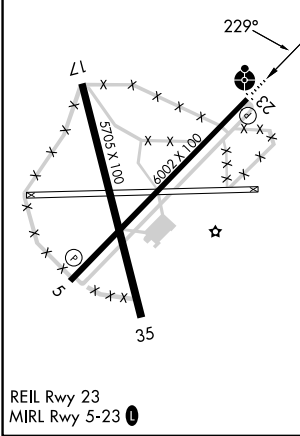
**ODALS**

**MISSED APPROACH:**  
Climb to 1500 then climbing right turn to 2000 direct STOAS and hold.

AWOS-3PT <b>118.725</b>	CHARLESTON APP CON <b>120.7 306.925</b>	UNICOM <b>122.8</b> (CTAF) <b>0</b>
----------------------------	--	--



ELEV 101	TDZE 101
----------	----------



CATEGORY	A	B	C	D
S-ILS 23	301-3/4 200 (200-3/4)			
S-LOC 23	480-3/4 379 (400-3/4)	480-1 379 (400-1)		
<b>C</b> CIRCLING	620-1 519 (600-1)	640-1 539 (600-1)	700-1 1/2 599 (600-1 1/2)	700-2 599 (600-2)

SE-2, 11 JUL 2024 to 08 AUG 2024

SE-2, 11 JUL 2024 to 08 AUG 2024