

HI-ILS or LOC RWY 21

LOC/DME I-GTB 108.5 Chan 22	APCH CRS 209°	Rwy Idg 10,000 TDZE 677 Arpt Elev 690
---	-------------------------	--

AL-5754 [USA]

WHEELER-SACK AAF (KGTB)

DME or RADAR required.

- * When ALS inop, increase vis to ¾ mile.
- ** When ALS inop, increase CAT C vis to 1 mile, CAT DE vis to 1¼ miles.

ALSF-1

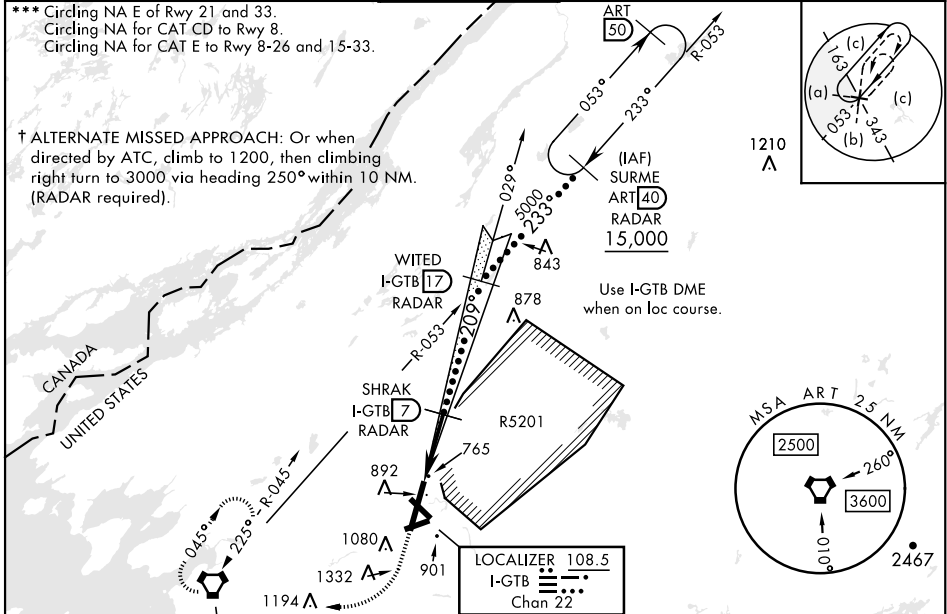


† MISSED APPROACH: Climb to 1200, then climbing right turn to 5000 direct ART VORTAC and hold. Continue climb in hold to 5000.

ATIS 119.525	APP CON 124.875 307.125	TOWER 118.75 290.25	GND CON 121.9 229.8	CLNC DEL 121.9	ASR/PAR
------------------------	-----------------------------------	-------------------------------	-------------------------------	--------------------------	---------

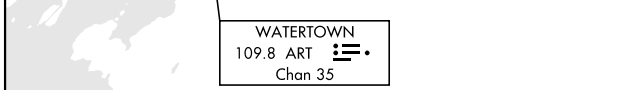
*** Circling NA E of Rwy 21 and 33.
Circling NA for CAT CD to Rwy 8.
Circling NA for CAT E to Rwy 8-26 and 15-33.

† ALTERNATE MISSED APPROACH: Or when directed by ATC, climb to 1200, then climbing right turn to 3000 via heading 250° within 10 NM. (RADAR required).

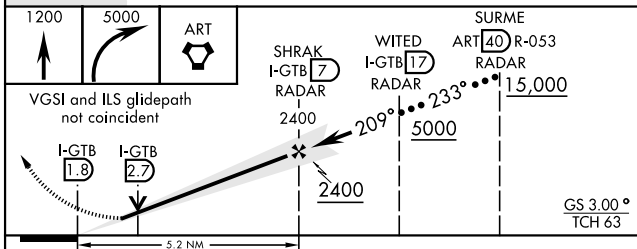


NE-2, 11 JUL 2024 to 08 AUG 2024

NE-2, 11 JUL 2024 to 08 AUG 2024

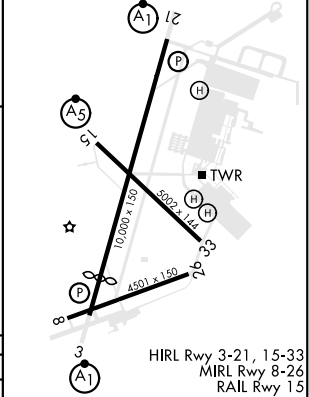


EMERG SAFE ALT 100 NM 7600



CATEGORY	C	D	E
S-ILS 21*	877-½	200	(200-½)
S-LOC 21**	1040-¾	363	(400-¾)
CIRCLING ***	1220-1½	1380-2¼	1640-3
	530 (600-1½)	690 (700-2¼)	950 (1000-3)

ELEV 690	TDZE 677
Rwy 3 Idg 8637'	209°



FAF to MAP 5.2 NM					
Knots	120	140	160	180	200
Min:Sec	2:36	2:14	1:57	1:44	1:34

HI-ILS or LOC RWY 21