

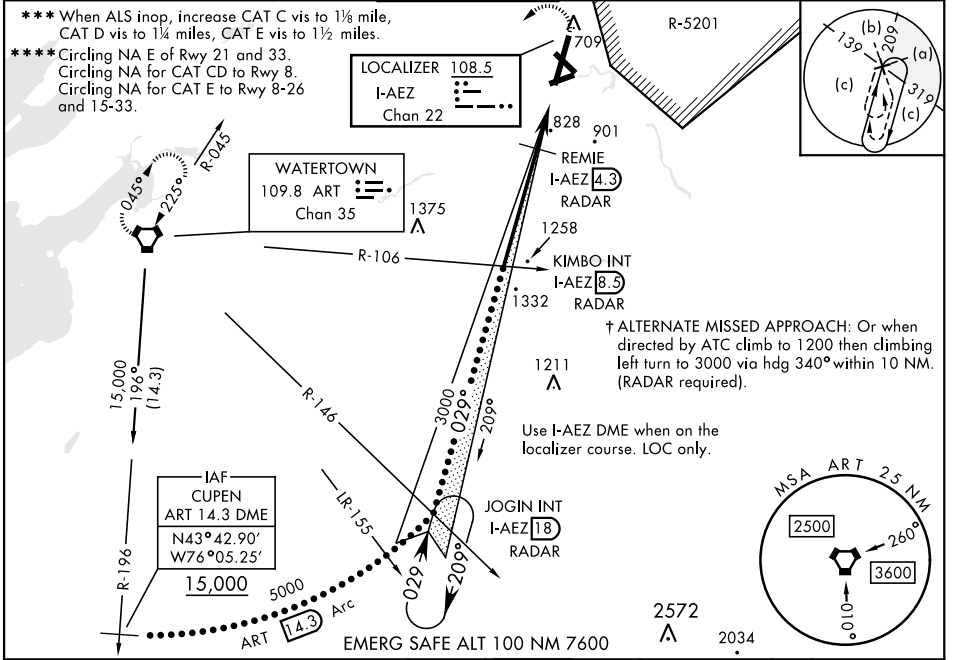
FORT DRUM, NEW YORK

HI-ILS or LOC RWY 3

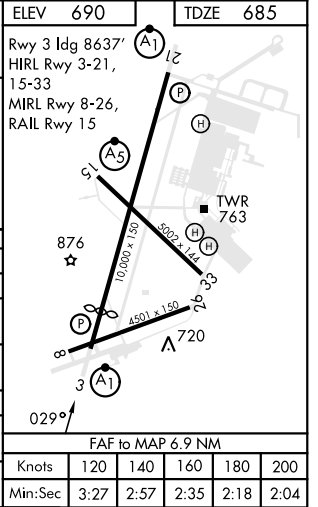
LOC/DME I-AEZ 108.5 Chan 22	APCH CRS 029°	Rwy Idg 8637 TDZE 685 Arpt Elev 690	AL-5754 [USA]	WHEELER-SACK AAF (KGTB)
---	-------------------------	--	---------------	-------------------------

DME or RADAR required * When ALS inop, increase vis to ½ mile. ** When ALS inop, increase CAT C vis to 2½ miles, CAT D vis to 2¾ miles, CAT E vis to 3 miles.	ALSF-1 	† MISSED APPROACH: Climb to 1200, then climbing left turn to 5000 direct ART VORTAC and hold, continue climb in hold to 5000.
---	------------	---

ATIS 119.525	APP CON 124.875 307.125	TOWER 118.75 290.25	GND CON 121.9 229.8	CLNC DEL 121.9	ASR/PAR
------------------------	-----------------------------------	-------------------------------	-------------------------------	--------------------------	---------



CUPEN R-196 ART 14.3	JOGIN INT ART R-146 I-AEZ 18 RADAR	KIMBO INT ART R-106 I-AEZ 8.3 RADAR	1200	5000	ART
15,000 5000 3000 3000 1560					
GS 3.00° TCH 66					
CATEGORY C D E					
S-ILS 3* 957-½ 272 (300-½)					
S-LOC 3** 1560-2 875 (900-2) 1560-2¼ 875 (900-2¼) 1560-2½ 875 (900-2½)					
CIRCLING **** 1560-2½ 870 (900-2½) 1560-2¾ 870 (900-2¾) 1640-3 950 (1000-3)					
DME MINIMUMS					
S-LOC 3 *** 1080-¾ 395 (400-¾) 1080-1 395 (400-1)					
CIRCLING **** 1220-1½ 530 (600-1½) 1380-2¼ 690 (700-2¼) 1640-3 950 (1000-3)					



NE-2, 11 JUL 2024 to 08 AUG 2024

NE-2, 11 JUL 2024 to 08 AUG 2024

FORT DRUM, NEW YORK
 Amdt 2 20APR23

44°03'N-75°43'W

WHEELER-SACK AAF (KGTB)

HI-ILS or LOC RWY 3