

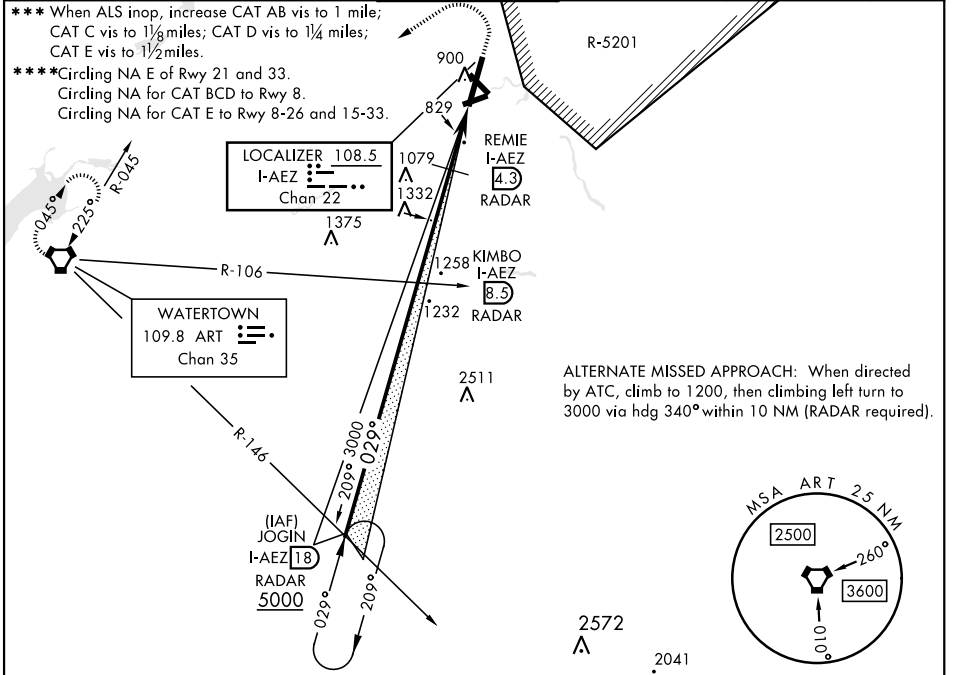
FORT DRUM, NEW YORK

ILS or LOC RWY 3

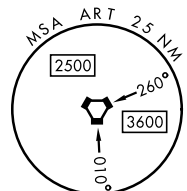
LOC/DME I-AEZ 108.5 Chan 22	APCH CRS 029°	Rwy Idg TDZE 8637 Arprt Elev 690	AL-5754 [USA]	WHEELER-SACK AAF (KGTB)
---	-------------------------	--	---------------	-------------------------

DME or RADAR required. RADAR required for procedure entry.	ALS-F1 	MISSED APPROACH: Climb to 1200, then climbing left turn to 5000 direct ART VORTAC and hold. Continue climb-in-hold to 5000.
--	------------	---

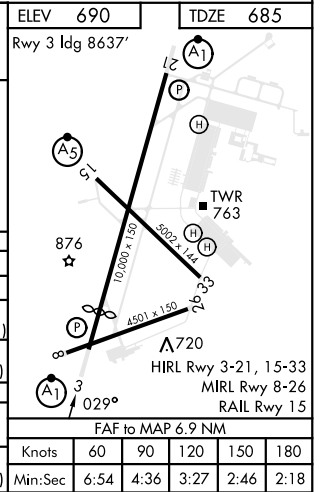
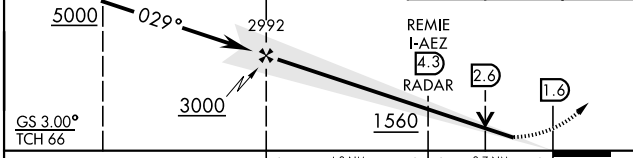
ATIS 119.525	APP CON 124.875 307.125	TOWER 118.75 290.25	GND CON 121.9 229.8	CLNC DEL 121.9	ASR/PAR
------------------------	-----------------------------------	-------------------------------	-------------------------------	--------------------------	---------



ALTERNATE MISSED APPROACH: When directed by ATC, climb to 1200, then climbing left turn to 3000 via hdg 340° within 10 NM (RADAR required).



JOGIN I-AEZ 18 RADAR	KIMBO I-AEZ 8.3 RADAR	1200	5000	ART	ELEV 690	TDZE 685
----------------------	-----------------------	------	------	-----	----------	----------



CATEGORY	A	B	C	D	E
S-ILS 3 *	957-1/2		272	(300-1/2)	
S-LOC 3 **	1560-1/2 875 (900-1/2)	1560-3/4 875 (900-3/4)	1560-2 875 (900-2)	1560-2 1/4 875 (900-2 1/4)	1560-2 1/2 875 (900-2 1/2)
**** CIRCLING	1560-1 1/4 870 (900-1 1/4)		1560-2 1/2 870 (900-2 1/2)	1560-2 3/4 870 (900-2 3/4)	1640-3 950 (1000-3)
DME MINIMUMS					
S-LOC 3 ***	1080-1/2 395 (400-1/2)		1080-3/4 395 (400-3/4)	1080-1 395 (400-1)	
**** CIRCLING	1200-1 510 (600-1)		1220-1 1/2 530 (600-1 1/2)	1380-2 1/4 690 (700-2 1/4)	1640-3 950 (1000-3)

FORT DRUM, NEW YORK 44° 03'N-75° 43'W WHEELER-SACK AAF (KGTB)

Amtd 3 23MAR23

ILS or LOC RWY 3

NE-2, 11 JUL 2024 to 08 AUG 2024

NE-2, 11 JUL 2024 to 08 AUG 2024