

APP CRS	Rwy Idg	<b>5004</b>
<b>216°</b>	TDZE	<b>717</b>
	Apt Elev	<b>717</b>

# RNAV (GPS) RWY 22

SHARP COUNTY RGNL (CVK)

RNP APCH.

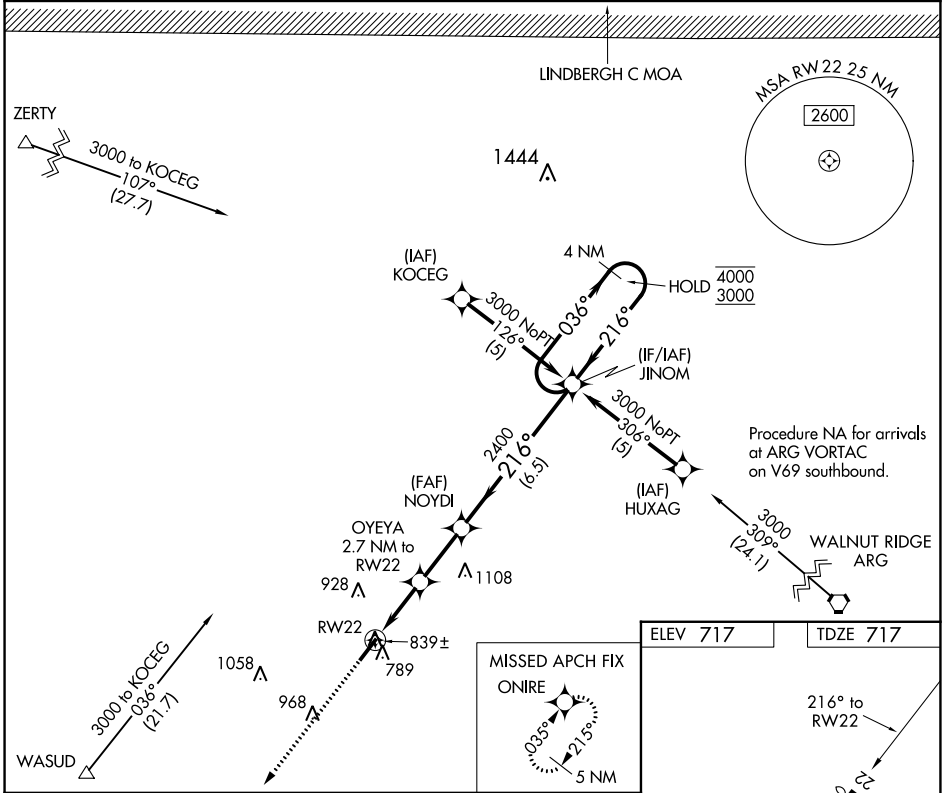
**▼** Rwy 22 helicopter visibility reduction below 3/4 SM NA. Circling Rwy 4 NA at night. Use Walnut Ridge Rgnl altimeter setting; when not received, use Jonesboro Municipal altimeter setting and increase all MDAs 60 feet, increase LNAV Cat C visibility 1/8 SM and Circling Cat C visibility 1/4 SM.

**MISSED APPROACH:** Climb to 3000 direct ONIRE and hold.

ARG AWOS-3PT  
**126.525**

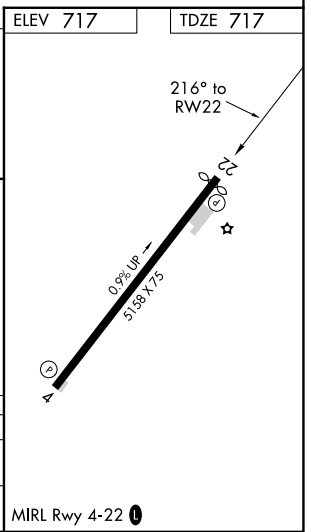
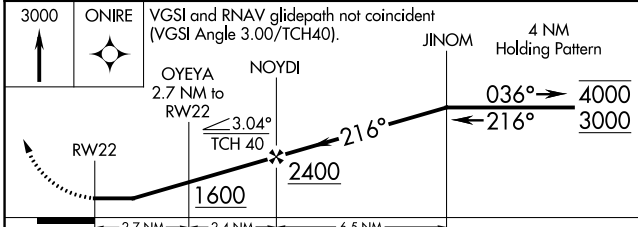
MEMPHIS CENTER  
**120.075 289.4**

UNICOM  
**122.7 (CTAF) 0**



SC-1, 11 JUL 2024 to 08 AUG 2024

SC-1, 11 JUL 2024 to 08 AUG 2024



CATEGORY	A	B	C	D
LNAV MDA	1360-1	643 (700-1)	1360-1 7/8 643 (700-1 7/8)	NA
CIRCLING	1400-1	683 (700-1)	1420-2 703 (800-2)	NA