


APP CRS	Rwy Idg 11000
174°	TDZE 47
	Apt Elev 47

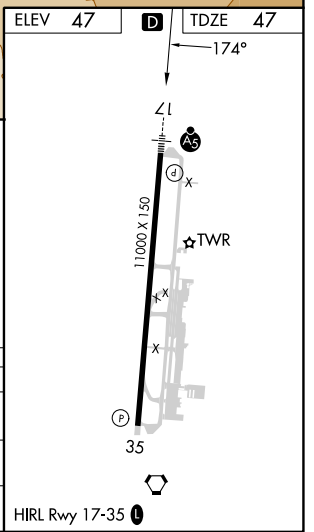
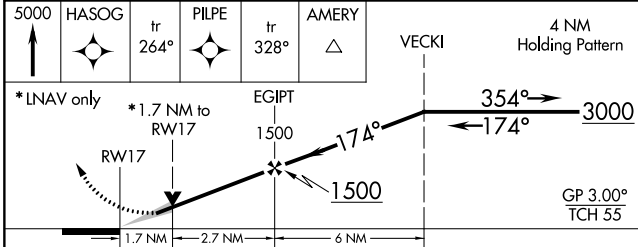
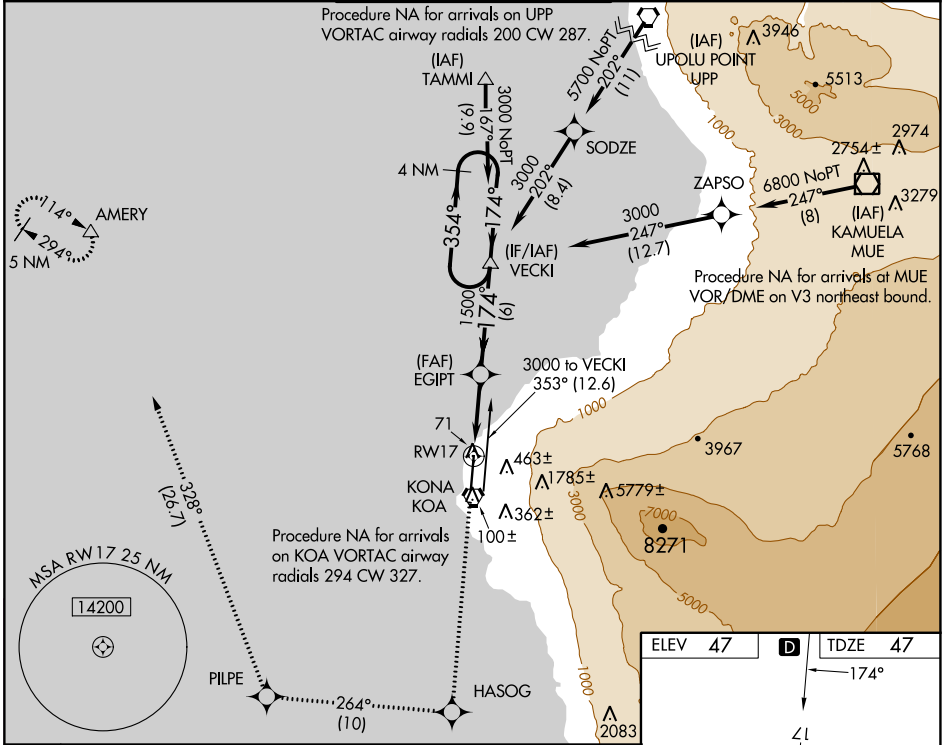
RNAV (GPS) Y RWY 17

ELLISON ONIZUKA KONA INTL AT KEAHOLE (KOA) (PHKO)


WAAS VNAV NA. For uncompensated Baro-VNAV systems, LNAV/VNAV NA below -5°C (23°F) or above 43°C (109°F). Circling NA east of Rwy 17-35. DME/DME RNP-0.3 NA. For inop ALS, increase LNAV/VNAV all Cats visibility to 1/2 miles.

MALS R

MISSED APPROACH: Climb to 5000 direct HASOG and on track 264° track to PILPE and on track 328° to AMERY and hold.

ATIS 127.4	HCF CENTER 118.45 278.3	KONA TOWER★ 120.3(CTAF) 254.3	GND CON 121.9	CLNC DEL 118.6
----------------------	-----------------------------------	---	-------------------------	--------------------------



CATEGORY	A	B	C	D
LNAV/VNAV DA	540-1¼		493 (500-1¼)	
LNAV MDA	640-½ 593 (600-½)		640-1¼ 593 (600-1¼)	
C CIRCLING	640-1 593 (600-1)		640-1¼ 593 (600-1¼)	
	640-1 593 (600-1)		640-2 593 (600-2)	

HIRL Rwy 17-35 

PAC, 11 JUL 2024 to 05 SEP 2024

PAC, 11 JUL 2024 to 05 SEP 2024