

MEDINA, OHIO

AL-5763 (FAA)

22363

APP CRS	Rwy Idg	<b>3556</b>
<b>271°</b>	TDZE	<b>1183</b>
	Apt Elev	<b>1190</b>

# RNAV (GPS) RWY 27

MEDINA MUNI (1G5)

RNP APCH.

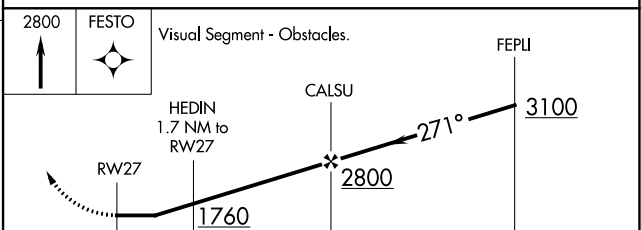
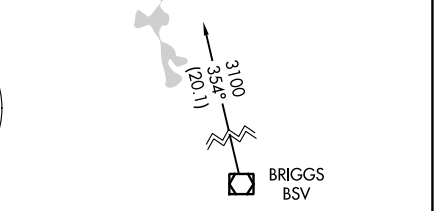
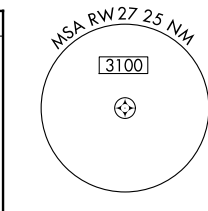
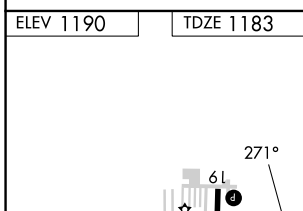
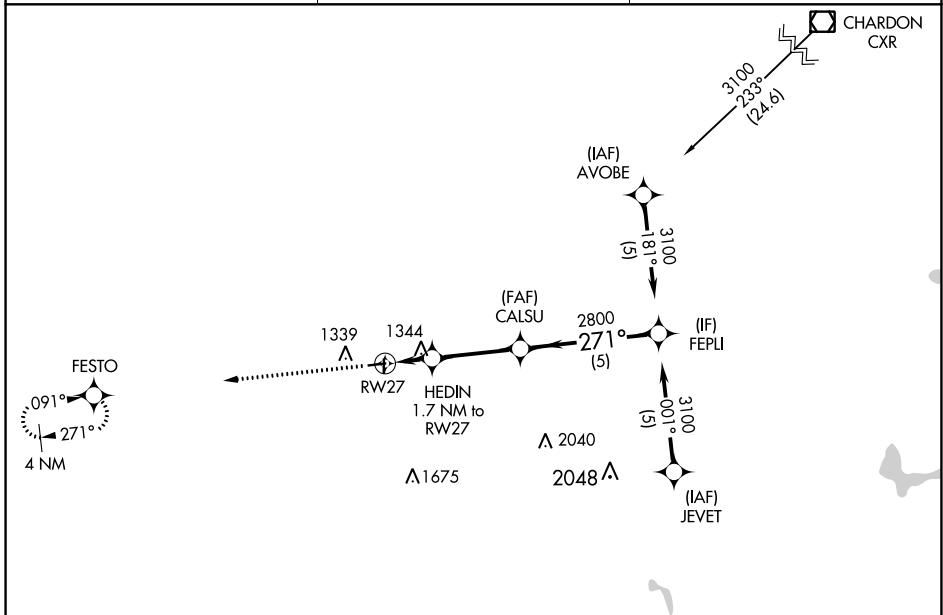
**NA** Rwy 27 helicopter visibility reduction below 3/4 SM NA. Use Cleveland-Hopkins Intl altimeter setting.

MISSED APPROACH: Climb to 2800 direct FESTO and hold.

CLE ASOS  
**127.85**

CLEVELAND APP CON  
**125.35 346.325**

UNICOM  
**123.0 (CTAF) 0**



REIL Rwy 27 <b>0</b>	MIRL Rwy 9-27 and 1-19 <b>0</b>			
CATEGORY	A	B	C	D
LNAV MDA	1700-1	517 (600-1)	1700-1 1/3 517 (600-1 1/3)	NA

MEDINA, OHIO  
Orig-C 07NOV19

41°08'N-81°46'W

# RNAV (GPS) RWY 27

EC-2, 11 JUL 2024 to 08 AUG 2024

EC-2, 11 JUL 2024 to 08 AUG 2024