

MEDINA, OHIO

AL-5763 (FAA)

23222

VOR/DME ACO 114.4 Chan 91	APP CRS 278°	Rwy Idg 3556 TDZE 1183 Apt Elev 1190
---	------------------------	---

VOR RWY 27

MEDINA MUNI (1G5)

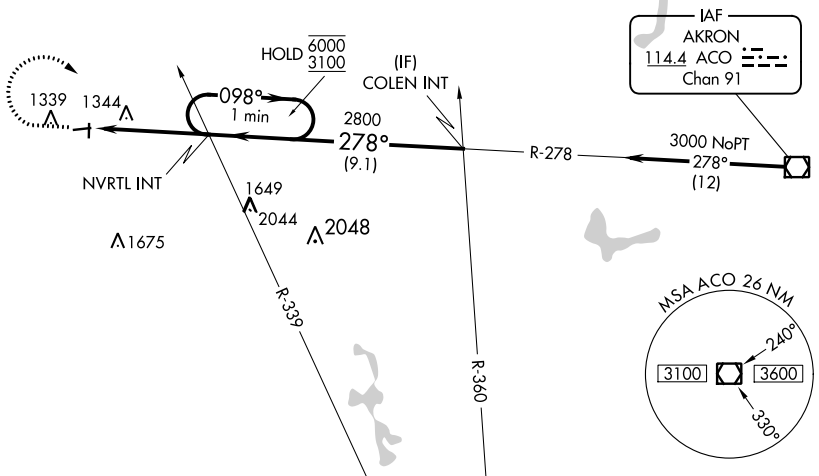
⚠ Rwy 27 helicopter visibility reduction below 3/4 SM NA.
⚠ NA Circling Rwy 1, 9, 19 NA at night. Use Cleveland-Hopkins Intl altimeter setting.

MISSED APPROACH: Climb to 2000 then climbing right turn to 3100 on ACO VOR/DME R-278 to NVRTL INT and hold, continue climb-in-hold to 3100.

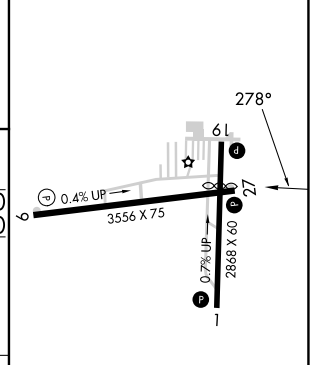
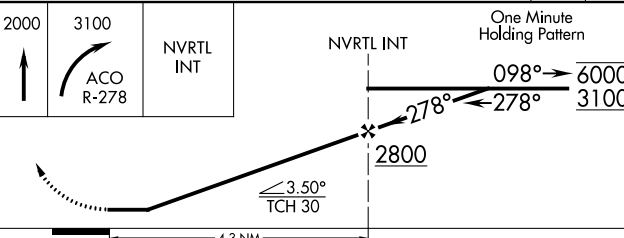
CLE ASOS
127.85

CLEVELAND APP CON
125.35 346.325

UNICOM
123.0 (CTAF) 0



ELEV 1190 | TDZE 1183



CATEGORY	A	B	C	D
S-27	1780-1	597 (600-1)	1780-1 ³ / ₄ 597 (600-1 ³ / ₄)	NA
C CIRCLING	1780-1	590 (600-1)	1780-1 ³ / ₄ 590 (600-1 ³ / ₄)	NA

REIL Rwy 27 **0**
MIRL Rwy 9-27, 1-19 **0**

FAF to MAP 4.3 NM

Knots	60	90	120	150	180
Min:Sec	4:18	2:52	2:09	1:43	1:26

MEDINA, OHIO
Amdt 3 27JAN22

41°08'N-81°46'W

MEDINA MUNI (1G5) VOR RWY 27

EC-2, 11 JUL 2024 to 08 AUG 2024

EC-2, 11 JUL 2024 to 08 AUG 2024