

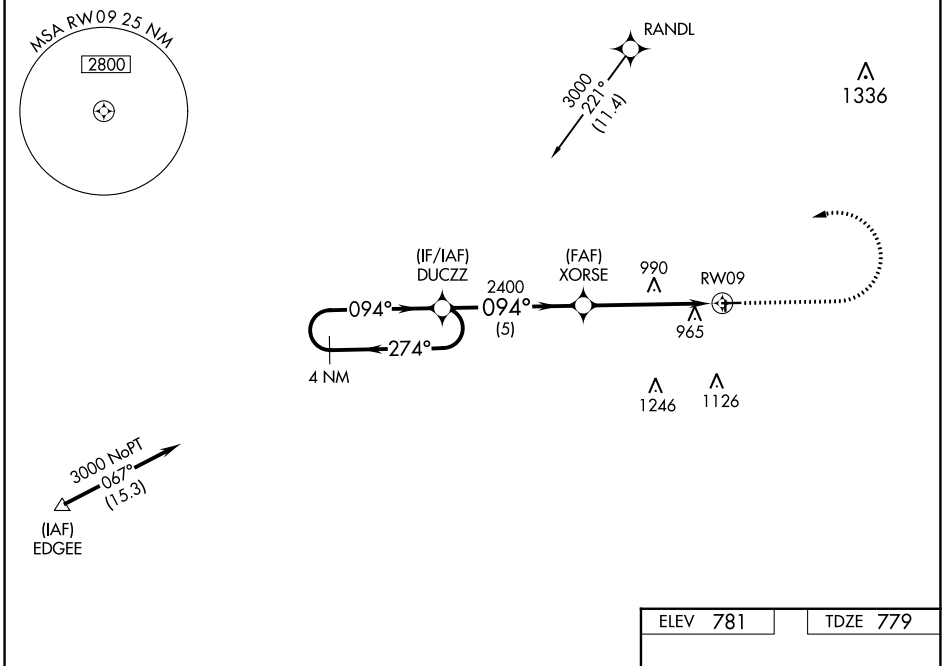
WAAS CH 93828 W09A	APP CRS 094°	Rwy Idg 3882 TDZE 779 Apt Elev 781
--	------------------------	---

RNAV (GPS) RWY 9

FULTON COUNTY (USE)

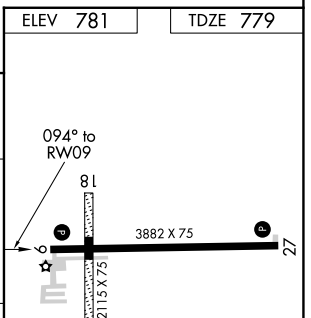
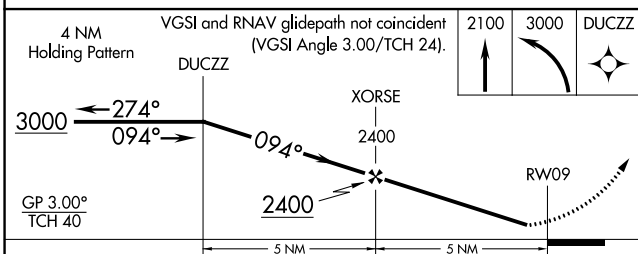
RNP APCH - GPS.	MISSED APPROACH: Climb to 2100 then climbing left turn to 3000 direct DUCZZ and hold.
<p>▼ For uncompensated Baro-VNAV systems, LNAV/VNAV NA below -16°C or above 54°C. Circling NA to Rwy 18 and 36. Rwy 9 helicopter visibility reduction below 1 SM NA. Procedure NA at night.</p>	

AWOS-3P 127.375	TOLEDO APP CON 134.35 317.55	UNICOM 123.0 (CTAF)
---------------------------	--	-------------------------------



EC-2, 11 JUL 2024 to 08 AUG 2024

EC-2, 11 JUL 2024 to 08 AUG 2024



CATEGORY	A	B	C	D
LPV DA	1109-1		330 (400-1)	
LNAV/VNAV DA	1198-1½		419 (500-1½)	
LNAV MDA	1300-1	521 (600-1)	1300-1½	521 (600-1½)
CIRCLING	1320-1	539 (600-1)	1480-2 699 (700-2)	1480-2¼ 699 (700-2¼)

ELEV 781	TDZE 779
REIL Rwys 9 and 27 1 MIRL Rwy 9-27 1	