

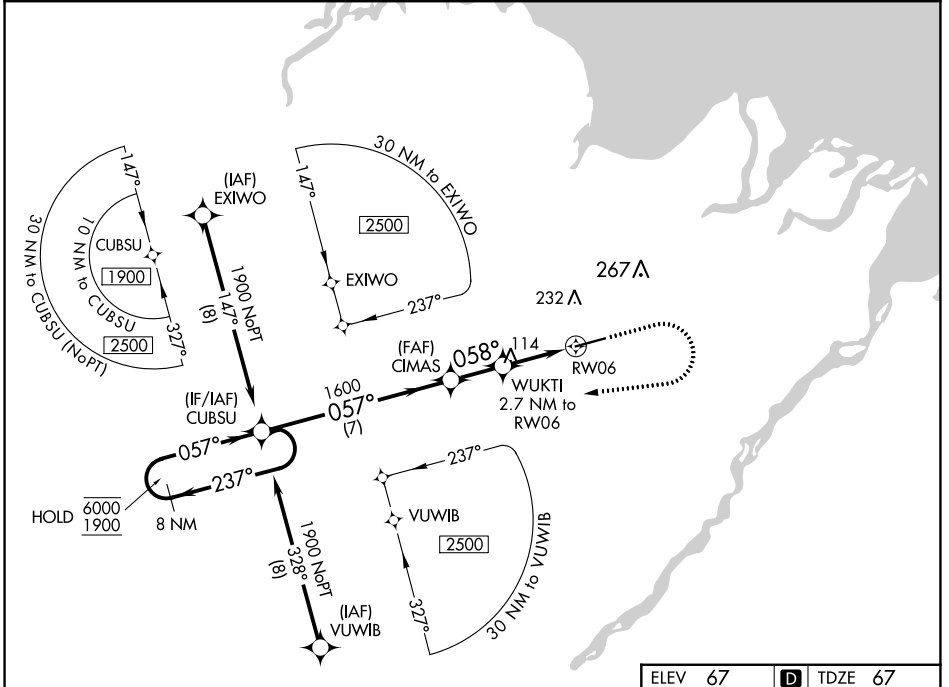
WAAS CH <b>49103</b> <b>W06A</b>	APP CRS <b>058°</b>	Rwy Idg <b>6500</b> TDZE <b>67</b> Apt Elev <b>67</b>
--	------------------------	---

# RNAV (GPS) Z RWY 6

DEADHORSE (SCC) (PASC)

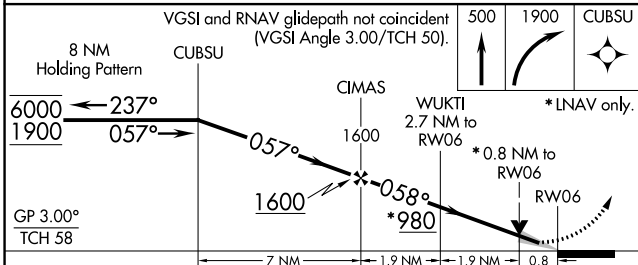
RNP APCH. ▼ ▲ For uncompensated Baro-VNAV systems, LNAV/VNAV NA below -17°C or above 54°C. For inop ALS, increase LPV Cat E visibility to RVR 4000, and increase LNAV/VNAV all Cats and LNAV Cats C/D/E visibility to RVR 4500. # RVR 1800 authorized with use of FD or AP or HUD to DA.	MALSRL AS	MISSED APPROACH: Climb to 500 then climbing right turn to 1900 direct CUBSU and hold.
--	--------------	---

AFIS <b>118.4</b>	ANCHORAGE CENTER <b>134.4 370.9</b>	DEADHORSE RADIO <b>123.6 (CTAF) 0</b>
----------------------	--	--



AK, 11 JUL 2024 to 05 SEP 2024

AK, 11 JUL 2024 to 05 SEP 2024



ELEV 67	D	TDZE 67
---------	---	---------

CATEGORY	A	B	C	D	E
LPV DA#		267/24	200 (200-½)		
LNAV/VNAV DA		369/24	302 (400-½)		
LNAV MDA		380/24	313 (400-½)		
CIRCLING	540-1	473 (500-1)	580-1½ 513 (600-1½)	620-2	553 (600-2)

