

WAAS CH 69229 W06A	APP CRS 063°	Rwy Idg TDZE Apt Elev	5001 82 82
--	------------------------	-----------------------------	---------------------------------------

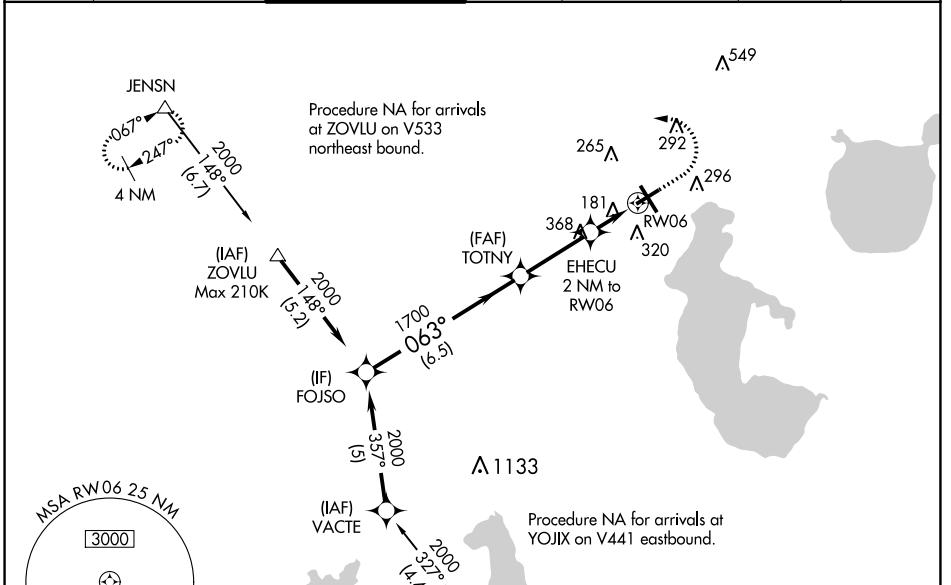
RNAV (GPS) RWY 6

KISSIMMEE GATEWAY (ISM)

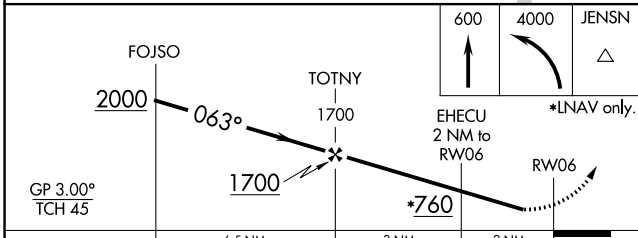
⚠ Baro-VNAV NA when using Orlando Intl altimeter setting. For uncompensated Baro-VNAV systems, LNAV/VNAV NA below -15°C (5°F) or above 43°C (109°F). DME/DME RNP-0.3 NA. Helicopter visibility reduction below 3/4 SM NA. When local altimeter setting not received, use Orlando Intl altimeter setting and increase all LPV DA to 375, all LNAV/VNAV DA to 484, and all MDA 40 feet; increase LNAV/VNAV all Cats and LNAV Cat C/D visibility 1/2 SM, and Circling Cat C visibility 1/4 SM.

⚠ MISSED APPROACH: Climb to 600 then climbing left turn to 4000 direct JENSN and hold, continue climb-in-hold to 4000.

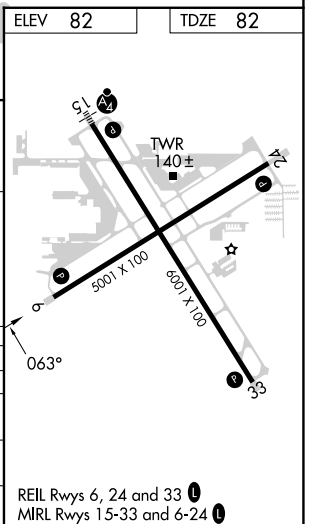
ATIS 128.775	ORLANDO APP CON 119.4 351.9	KISSIMMEE TOWER * 124.45 (CTAF) 0	CLNC DEL 121.7	CLNC DEL 123.95 (when twr closed)	GND CON 121.7	UNICOM 122.95
------------------------	---------------------------------------	--	--------------------------	--	-------------------------	-------------------------



ELEV 82	TDZE 82
----------------	----------------



CATEGORY	A	B	C	D
LPV DA		348-1	266 (300-1)	
LNAV/VNAV DA		457-1 1/4	375 (400-1 1/4)	
LNAV MDA		440-1	358 (400-1)	
CIRCLING	620-1	538 (600-1)	680-1 1/2 598 (600-1 1/2)	700-2 618 (700-2)



SE-3, 11 JUL 2024 to 08 AUG 2024

SE-3, 11 JUL 2024 to 08 AUG 2024