

WAAS CH 97603 W14A	APP CRS 135°	Rwy Idg TDZE Apt Elev	6021 327 327
--	------------------------	-----------------------------	---

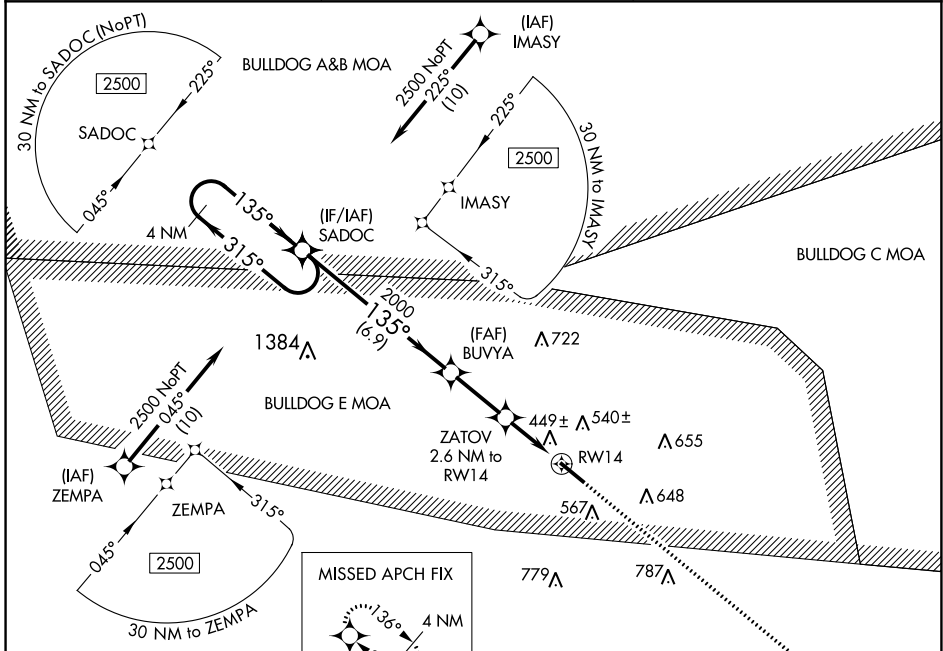
RNAV (GPS) RWY 14

EAST GEORGIA RGNL (SBO)

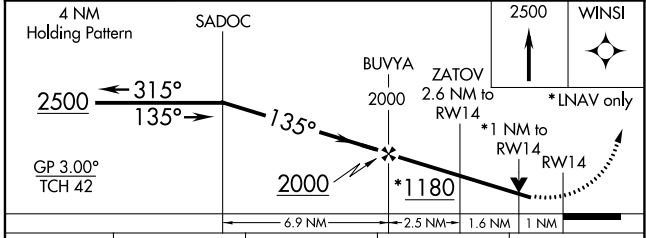
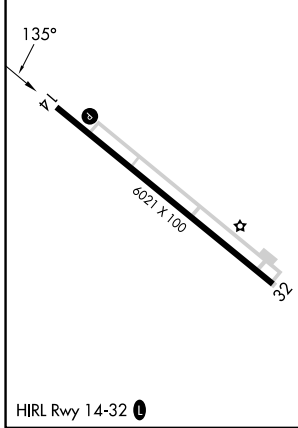
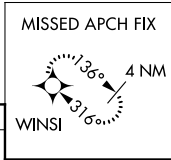
▼ Baro-VNAV and VDP NA when using Vidalia altimeter setting. For uncompensated Baro-VNAV systems, LNAV/VNAV NA below -15°C (5°F) or above 54°C (130°F). When local altimeter setting not received, use Vidalia altimeter setting and increase LPV DA to 708 feet, LNAV/VNAV DA to 698 feet, and all MDA 80 feet; increase LPV and LNAV/VNAV all Cats visibility ¼ SM, LNAV Cats C/D visibility ⅓ SM, and Circling Cats C/D visibility ¼ SM. Rwy 14 helicopter visibility reduction below ¼ SM NA. DME /DME RNP-0.3 NA.

MISSED APPROACH: Climb to 2500 direct WINSI and hold.

AWOS-3 133.375	ATLANTA CENTER 127.95 343.75	UNICOM 122.975 (CTAF) 0
--------------------------	--	-----------------------------------



ELEV 327	TDZE 327
----------	----------



CATEGORY	A	B	C	D
LPV DA		643-1	316 (400-1)	
LNAV/VNAV DA		633-1	306 (400-1)	
LNAV MDA		700-1	373 (400-1)	
CIRCLING	900-1 573 (600-1)	920-1 593 (600-1)	1000-2 673 (700-2)	1000-2¼ 673 (700-2¼)

SE-4, 11 JUL 2024 to 08 AUG 2024

SE-4, 11 JUL 2024 to 08 AUG 2024