

WAAS CH 86543 W04A	APP CRS 044°	Rwy Idg TDZE Apt Elev	5001 978 979
--	------------------------	-----------------------------	---

RNAV (GPS) RWY 4

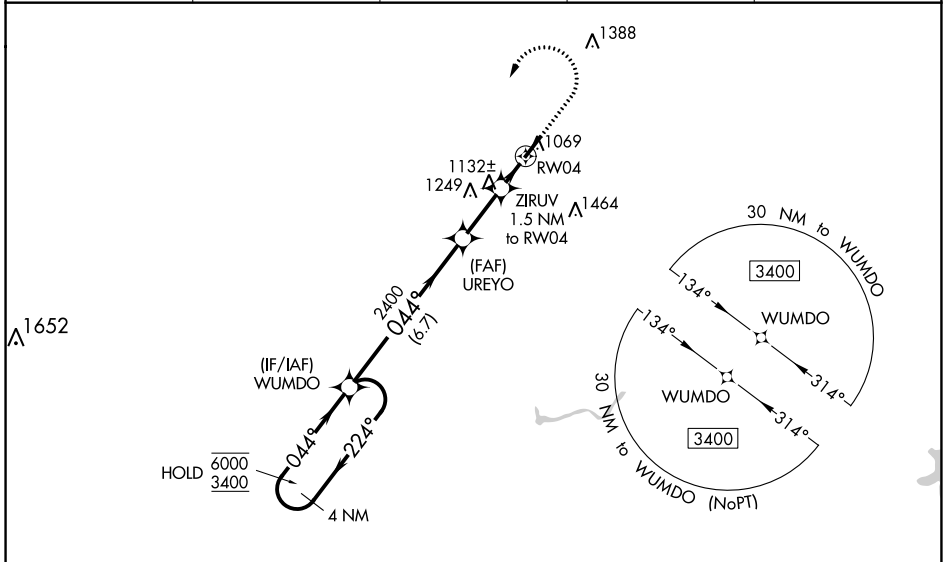
RICHARD DOWNING (I4 \emptyset)

RNP APCH.

▼ Rwy 4 helicopter visibility reduction below $\frac{3}{4}$ SM NA. Baro-VNAV NA when using Zanesville altimeter setting. For uncompensated Baro-VNAV systems, LNAV/VNAV NA below -16°C or above 48°C . When local altimeter setting not received, use Zanesville altimeter setting and increase LPV DA to 1344 feet, increase LNAV/VNAV DA to 1310 feet, increase all MDA 80 feet and LPV and LNAV/VNAV visibility $\frac{1}{2}$ SM, LNAV Cat C/D visibility $\frac{1}{4}$ SM, and Circling Cat C/D visibility $\frac{1}{2}$ SM.

▲ NA MISSED APPROACH: Climb to 1480 then climbing left turn to 3400 direct WUMDO and hold.

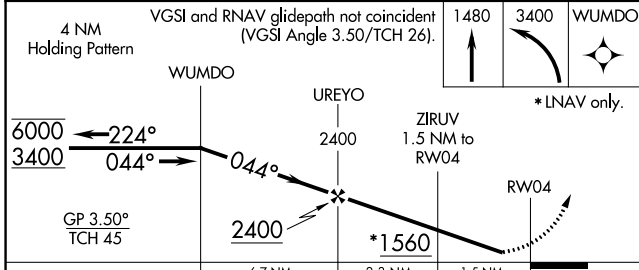
AWOS-3 118.875	INDIANAPOLIS CENTER 124.45 323.275	GCO 121.725	UNICOM 123.0 (CTAF)	122.9 \emptyset
--------------------------	--	-----------------------	-------------------------------	--------------------------



EC-2, 11 JUL 2024 to 08 AUG 2024

EC-2, 11 JUL 2024 to 08 AUG 2024

ELEV 979	TDZE 978
----------	----------



CATEGORY	A	B	C	D
LPV DA		1282- $\frac{7}{8}$	304 (400- $\frac{7}{8}$)	
LNAV/VNAV DA		1248- $\frac{7}{8}$	270 (300- $\frac{7}{8}$)	
LNAV MDA	1400-1	422 (500-1)	1400-1 $\frac{1}{4}$	422 (500-1 $\frac{1}{4}$)
C CIRCLING	1440-1 461 (500-1)	1500-1 521 (600-1)	1780-2 $\frac{1}{4}$ 801 (900-2 $\frac{1}{4}$)	1780-2 $\frac{1}{2}$ 801 (900-2 $\frac{1}{2}$)

