

WAAS CH <b>70517</b> <b>W21A</b>	APP CRS <b>209°</b>	Rwy Idg <b>4400</b> TDZE <b>416</b> Apt Elev <b>416</b>
--	------------------------	---

# RNAV (GPS) RWY 21

FARMVILLE RGNL (FVX)

RNP APCH-GPS.

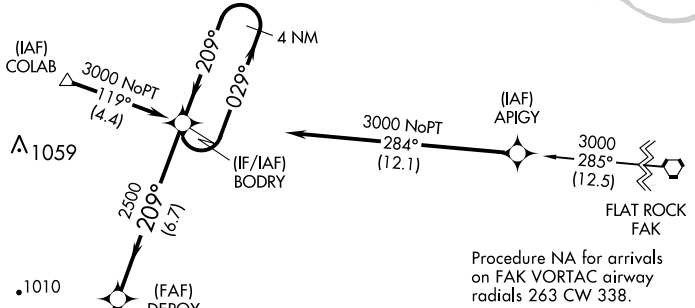
**⚠** Baro-VNAV NA when using Lynchburg Rgnl/Preston Glenn Fld altimeter setting. For uncompensated Baro-VNAV systems, LNAV/VNAV NA below -15°C or above 54°C. When local altimeter setting not received, use Lynchburg Rgnl/Preston Glenn Fld altimeter setting and increase LPV DA to 854 feet and all visibilities ¼ SM, increase LNAV/VNAV DA to 1024 feet and all visibilities ⅓ SM, increase all MDAs 160 feet and LNAV visibility Cat C ⅓ SM. Circling Rwy 3 NA at night. Rwy 21 helicopter visibility reduction below 1 SM NA.

**MISSED APPROACH:**  
Climb to 3000 direct WAMPO and hold.

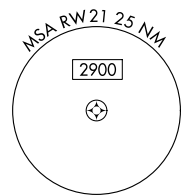
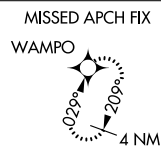
AWOS-3  
**132.725**

ROANOKE APP CON  
**135.0 254.325**

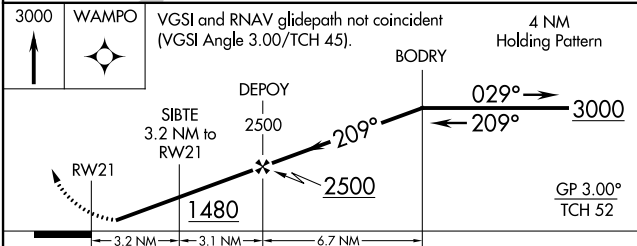
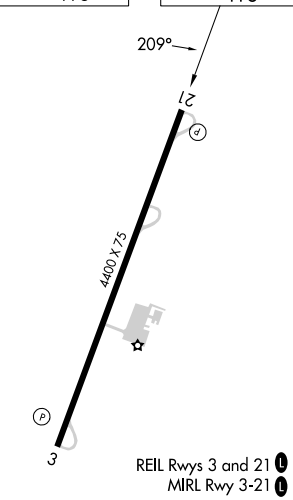
UNICOM  
**122.8 (CTAF)**



Procedure NA for arrivals on FAK VORTAC airway radials 263 CW 338.



ELEV 416 TDZE 416



CATEGORY	A	B	C	D
LPV DA	696-1		280 (300-1)	NA
LNAV/VNAV DA	866-1⅓		450 (500-1⅓)	NA
LNAV MDA	860-1	444 (500-1)	860-1⅓ 444 (500-1⅓)	NA
CIRCLING	900-1	484 (500-1)	1000-1½ 584 (600-1½)	NA

NE-3, 11 JUL 2024 to 08 AUG 2024

NE-3, 11 JUL 2024 to 08 AUG 2024