

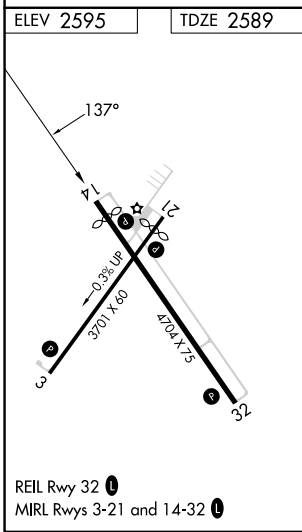
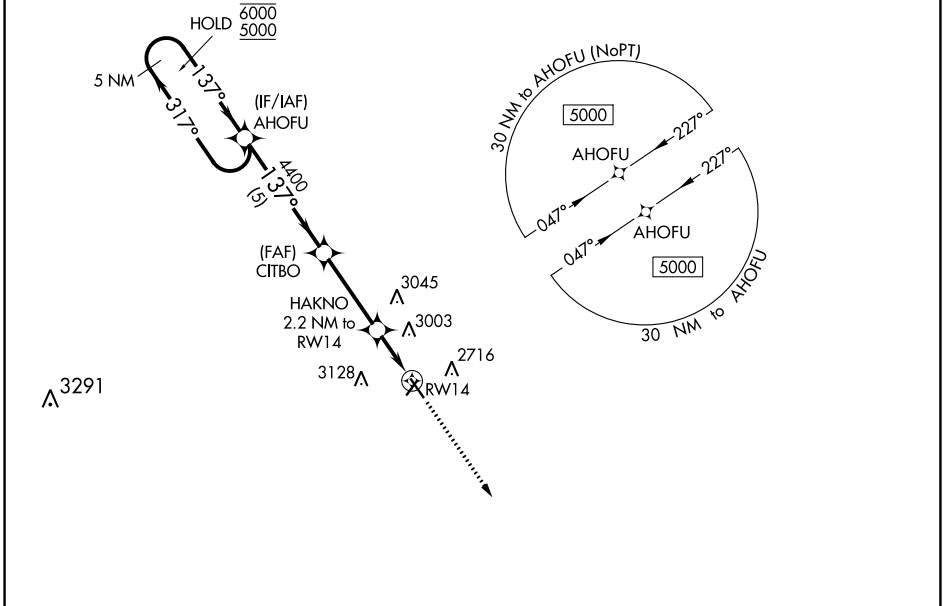
WAAS CH 61037 W14A	APP CRS 137°	Rwy Idg TDZE Apt Elev 4320 2589 2595
--	------------------------	--

RNAV (GPS) RWY 14

MILLER FLD (VTN)

RNP APCH.	MISSED APPROACH: Climb to 5000 direct GIYIT and hold.
<p>For uncompensated Baro-VNAV systems, LNAV/VNAV NA below -25°C or above 54°C . Rwy 14 helicopter visibility reduction below ¾ SM NA.</p>	

ASOS 118.075	DENVER CENTER 127.95 338.2	UNICOM 122.8 (CTAF) 0
------------------------	--------------------------------------	---------------------------------



ELEV 2595	TDZE 2589					
<p>5 NM Holding Pattern</p> <p>6000 ← 317°</p> <p>5000 → 137°</p> <p>GP 3.00°</p> <p>TCH 40</p>		<p>AHOFU</p> <p>4400</p>	<p>CITBO</p> <p>4400</p>	<p>HAKNO</p> <p>2.2 NM to RWY14</p> <p>*1.7 NM to RWY14</p>	<p>5000</p> <p>↑</p>	<p>GIYIT</p> <p>⬠</p>
		<p>5 NM</p>		<p>*LNAV only</p>		
CATEGORY	A	B	C	D		
LPV DA	2861-1	272 (300-1)	NA			
LNAV/VNAV DA	3239-2¼	650 (700-2¼)	NA			
LNAV MDA	3160-1	571 (600-1)	NA			
<input checked="" type="checkbox"/> CIRCLING	3160-1 565 (600-1)	3560-1½ 965 (1000-1½)	NA			

NC-2, 11 JUL 2024 to 08 AUG 2024

NC-2, 11 JUL 2024 to 08 AUG 2024