

# WYLSN EIGHT DEPARTURE (RNAV)

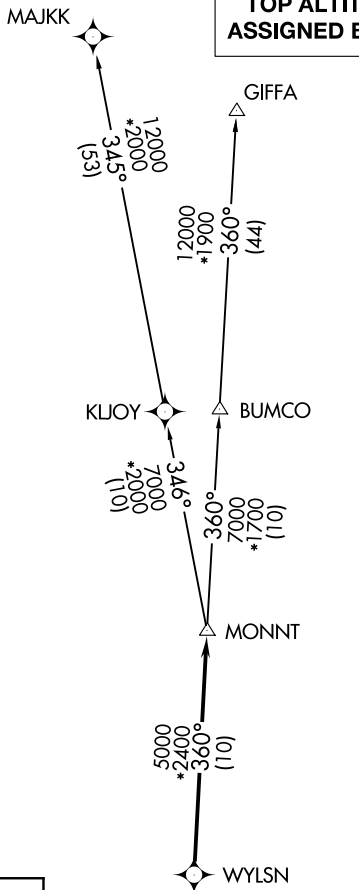
HOUSTON DEP CON  
128.6 360.85

**TOP ALTITUDE:  
ASSIGNED BY ATC**

NOTE: RADAR required.  
NOTE: DME/DME/IRU or GPS required.  
NOTE: RNAV 1.

### TAKEOFF MINIMUMS

Rwy 13, 31: Standard with minimum  
climb of 500' per NM to 560.



SC-5, 11 JUL 2024 to 08 AUG 2024

SC-5, 11 JUL 2024 to 08 AUG 2024

### DEPARTURE ROUTE DESCRIPTION

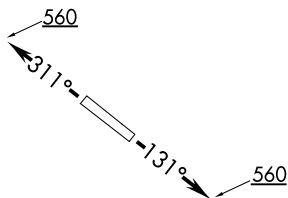
TAKEOFF RUNWAY 13: Climb on heading 131° to 560 for RADAR vectors to WYLSN, thence. . .

TAKEOFF RUNWAY 31: Climb on heading 311° to 560 for RADAR vectors to WYLSN, thence. . .

. . . on track 360° to MONNT, then on (transition).  
Maintain ATC assigned altitude. Expect filed altitude  
10 minutes after departure.

GIFFA TRANSITION (WYLSN8.GIFFA)

MAJJK TRANSITION (WYLSN8.MAJKK)



NOTE: Chart not to scale.

# WYLSN EIGHT DEPARTURE (RNAV)