

LOC/DME I-XJX <b>109.15</b> Chan <b>28</b> (Y)	APP CRS <b>002°</b>	Rwy Idg TDZE <b>620</b> Apt Elev <b>620</b>	<b>4002</b>
--	------------------------	---	-------------

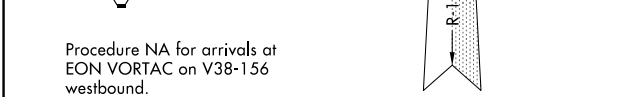
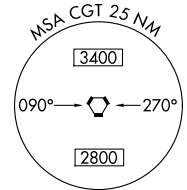
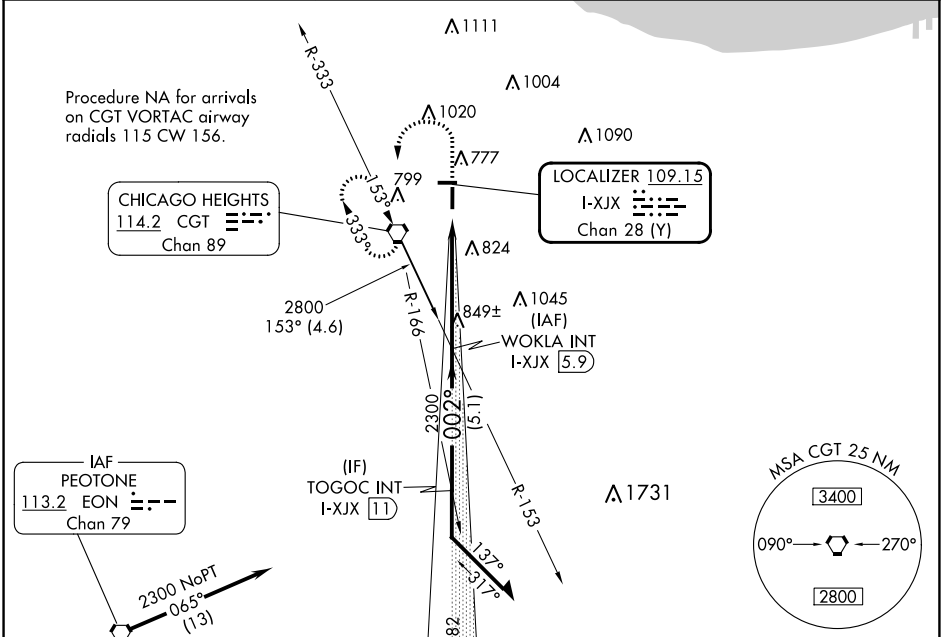
# LOC RWY 36

LANSING MUNI (IGQ)

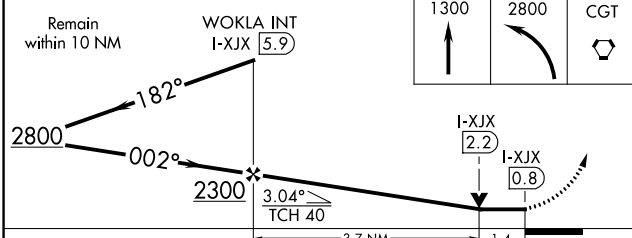
**NA** VDP NA when using Chicago Midway Intl altimeter setting. When local altimeter setting not received, use Chicago Midway Intl altimeter setting and increase all MDAs 60 feet. Circling Rwy 9 NA at night.

**MISSED APPROACH:** Climb to 1300 then climbing left turn to 2800 direct CGT VORTAC and hold, continue climb-in-hold to 2800.

AWOS-3PT <b>119.275</b>	CHICAGO APP CON <b>128.2 285.6</b>	UNICOM <b>122.7</b> (CTAF) <b>0</b>
----------------------------	---------------------------------------	--



Procedure NA for arrivals at EON VORTAC on V38-156 westbound.



ELEV 620	TDZE 620
----------	----------

REIL Rwy 9, 18, 27, and 36  
MIRL Rwy 9-27 and 18-36

FAF to MAP 5.1 NM					
Knots	60	90	120	150	180
Min:Sec	5:06	3:24	2:33	2:02	1:42

CATEGORY	A	B	C	D
S-36	1100-1	480 (500-1)		NA
CIRCLING	1140-1	520 (600-1)		NA

EC-3, 11 JUL 2024 to 08 AUG 2024

EC-3, 11 JUL 2024 to 08 AUG 2024