

| | | | |
|--|------------------------|-----------------------------|---|
| WAAS CH 61335 W35A | APP CRS 348° | Rwy Idg TDZE Apt Elev | 5002 927 936 |
|--|------------------------|-----------------------------|---|

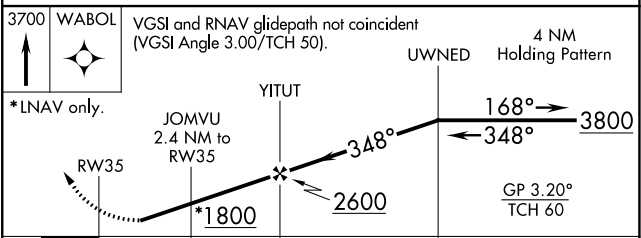
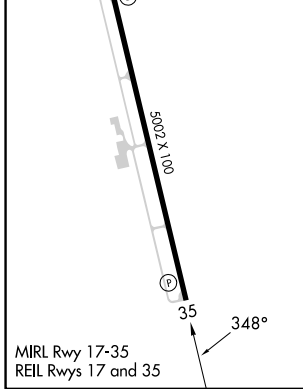
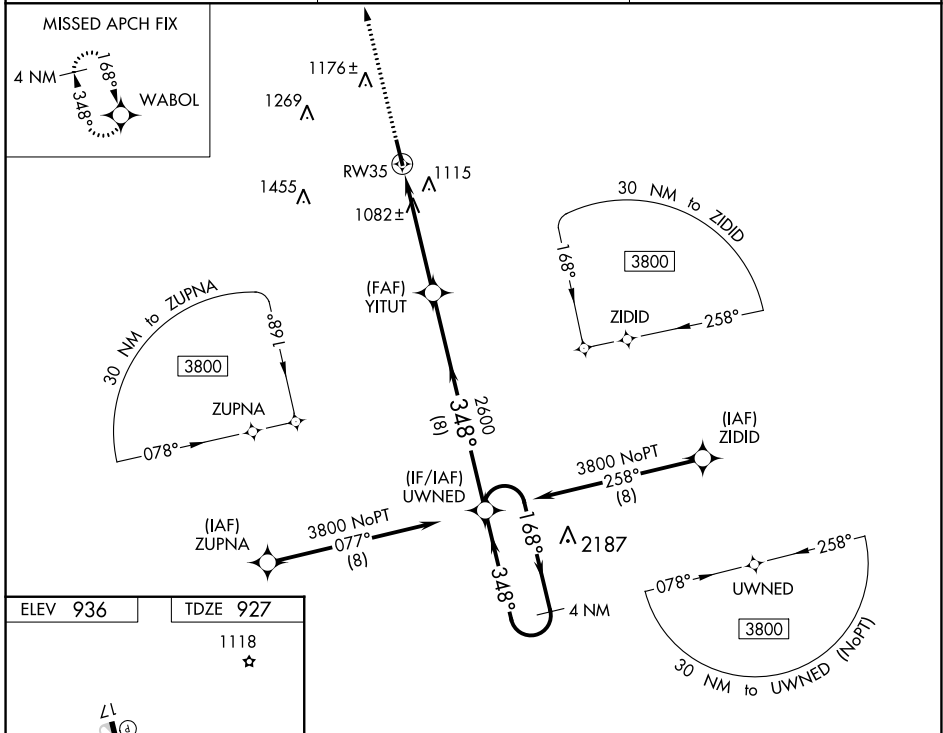
RNAV (GPS) RWY 35

LAWRENCEBURG-LAWRENCE COUNTY (2M2)

⚠ Circling Rwy 17 NA at night. For uncompensated Baro-VNAV systems, LNAV/VNAV NA below -16°C (5°F) or above 54°C (130°F). DME/DME RNP-0.3 NA. When local altimeter setting not received, use Huntsville Intl-Carl T Jones Fld altimeter setting and increase all DA 142 feet and all MDA 140 feet; increase LPV all Cats visibility ¼ mile, LNAV/VNAV all Cats visibility ⅓ mile. Rwy 17 helicopter visibility reduction below 1 SM NA. Rwy 35 helicopter visibility reduction below ¾ SM NA.

⚠ NA MISSED APPROACH: Climb to 3700 direct WABOL and hold.

| | | |
|--------------------------|--|-------------------------------|
| AWOS-3 120.175 | MEMPHIS CENTER 125.85 379.25 | UNICOM 122.8 (CTAF) |
|--------------------------|--|-------------------------------|



| CATEGORY | A | B | C | D |
|-------------------|---------|--------------|---|----|
| LPV DA | 1293-1½ | 366 (400-1½) | | NA |
| LNAV/VNAV DA | 1354-1¼ | 427 (500-1¼) | | NA |
| LNAV MDA | 1340-1 | 413 (500-1) | | NA |
| C CIRCLING | 1500-1 | 564 (600-1) | | NA |

SE-1, 11 JUL 2024 to 08 AUG 2024

SE-1, 11 JUL 2024 to 08 AUG 2024