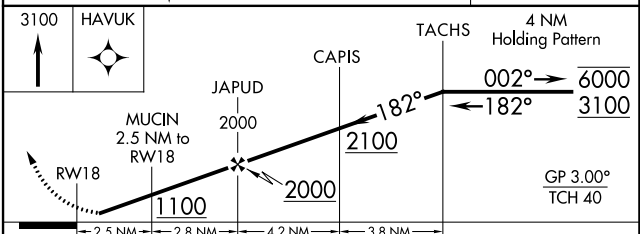
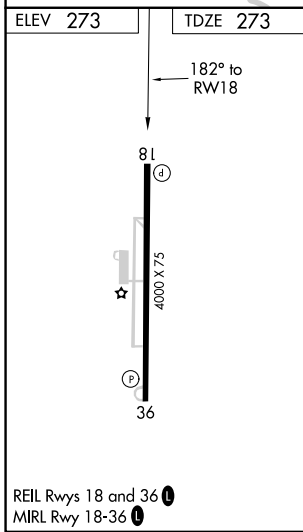
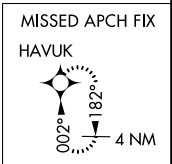
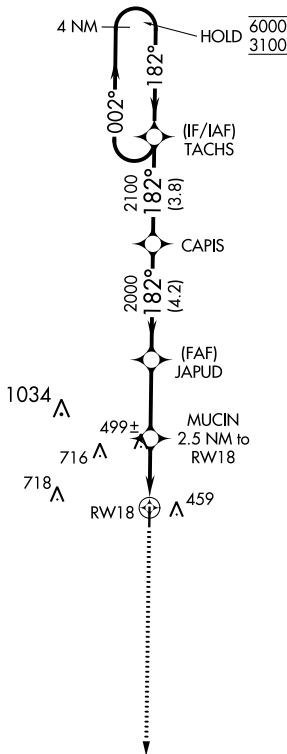
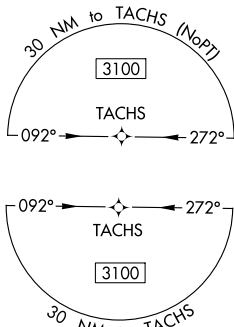


| | | |
|--|------------------------|---|
| WAAS CH 45543 W18A | APP CRS 182° | Rwy Idg TDZE 273 Apt Elev 273 |
|--|------------------------|---|

RNAV (GPS) RWY 18

POCAHONTAS MUNI (M7 \emptyset)

| | | |
|--------------------------------|---|---|
| RNP APCH. | <p>▼ Rwy 18 helicopter visibility reduction below $\frac{3}{4}$ SM NA. ▲ Baro-VNAV NA. Use Walnut Ridge altimeter setting.</p> | MISSED APPROACH: Climb to 3100 direct HAVUK and hold. |
| ARG AWOS-3PT 126.525 | MEMPHIS CENTER 120.075 289.4 | UNICOM 122.8 (CTAF) \emptyset |



| | | | | |
|-------------------|--|---|---|---|
| CATEGORY | A | B | C | D |
| LPV DA | 571-1 298 (300-1) | | | |
| RNAV/VNAV DA | 733-1 $\frac{3}{8}$ 460 (500-1 $\frac{3}{8}$) | | | |
| RNAV MDA | 780-1 507 (600-1) | | 780-1 $\frac{3}{8}$ 507 (600-1 $\frac{3}{8}$) | |
| C CIRCLING | 900-1 627 (700-1) | | 1100-2 $\frac{1}{2}$ 827 (900-2 $\frac{1}{2}$) | 1100-2 $\frac{3}{4}$ 827 (900-2 $\frac{3}{4}$) |

SC-1, 11 JUL 2024 to 08 AUG 2024

SC-1, 11 JUL 2024 to 08 AUG 2024