

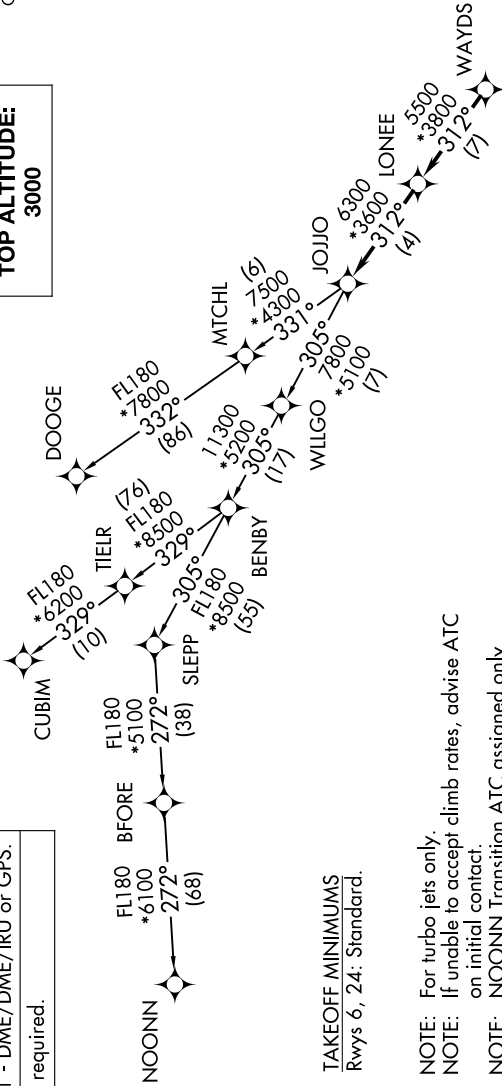
JOJJO FIVE DEPARTURE (RNAV)

LANCASTER COUNTY-MC WHIRTER FLD (LKR)
AL-5853 (FAA) LANCASTER, SOUTH CAROLINA

CHARLOTTE DEP CON
120.05 307.8
AWOS-3
120.825
GCO
121.725
UNICOM (CTAF)
122.725

**TOP ALTITUDE:
3000**

SE-2, 11 JUL 2024 to 08 AUG 2024



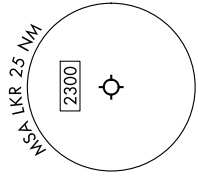
TAKEOFF MINIMUMS
Rwys 6, 24: Standard.

- NOTE: For turbo jets only.
- NOTE: If unable to accept climb rates, advise ATC on initial contact.
- NOTE: NOONN Transition ATC assigned only.
- NOTE: Upon reaching 10000 MSL, accelerate to and maintain 280K, if unable advise ATC.

DEPARTURE ROUTE DESCRIPTION

Climb on heading assigned by ATC, on RADAR vectors to WAYDS, then on depicted route to JOJJO. Then on assigned transition. Maintain 3000, expect filed altitude within 10 minutes after departure.

- CUBIM TRANSITION (JOJJO5.CUBIM)
- DOOGE TRANSITION (JOJJO5.DOOGE)
- NOONN TRANSITION (JOJJO5.NOONN)



NOTE: Chart not to scale.

JOJJO FIVE DEPARTURE (RNAV)

LANCASTER, SOUTH CAROLINA
LANCASTER COUNTY-MC WHIRTER FLD (LKR)

SE-2, 11 JUL 2024 to 08 AUG 2024