

RADAR and DME required.

**TOP ALTITUDE:  
ASSIGNED BY ATC**

REGIONAL DEP CON  
118.1 306.95  
CLNC DEL  
123.95  
GND CON  
123.95  
DENTON TOWER \*  
119.95 (CTAF)

TAKEOFF MINIMUMS  
Rwys 18L/R, 36L/R: Standard.

KINGDOM FOUR DEPARTURE  
(KING4.TTT) 251ANZ4

(KING4.TTT) 24053  
KINGDOM FOUR DEPARTURE

AL-5866 (FAA)

DENTON ENTERPRISE (DTE)  
DENTON, TEXAS

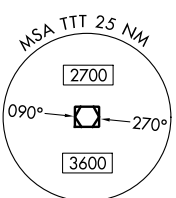
MAVERICK  
113.1 TTT  
Chan 78

WICHITA FALLS  
112.7 SPS  
Chan 74

LUBBOCK  
109.2 LBB  
Chan 29

ABILENE  
113.7 ABI  
Chan 84

MILLSAP  
117.7 MQP  
Chan 124



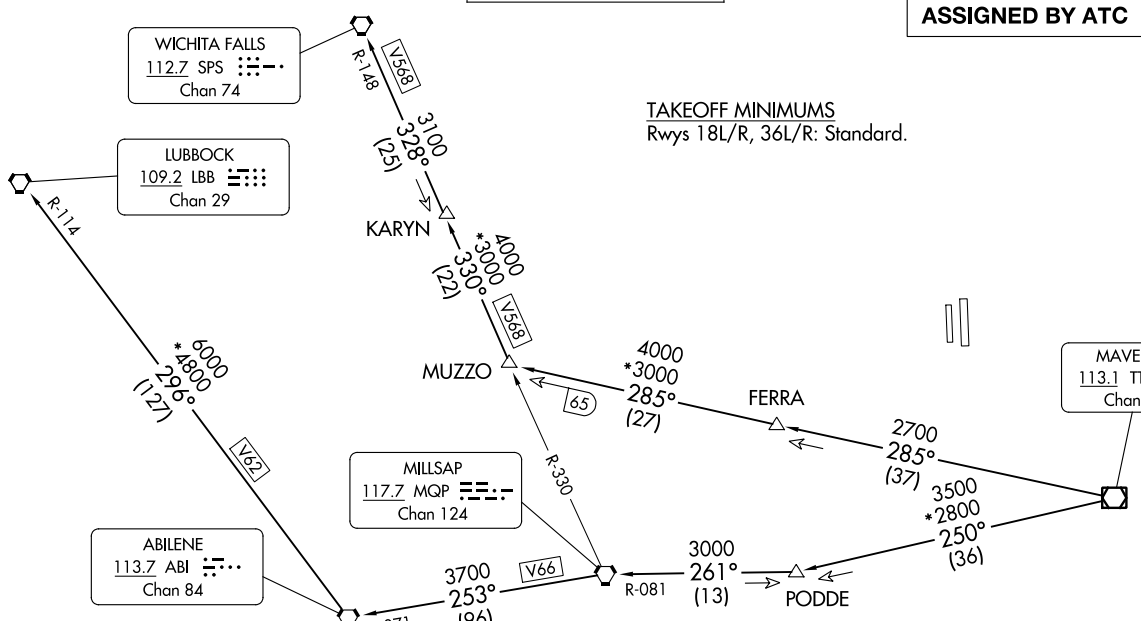
NOTE: Chart not to scale.

- NOTE: LUBBOCK Transition: For all aircraft overflying the MQP VORTAC westbound or direct.
- NOTE: MILLSAP Transition: For all aircraft overflying the MQP VORTAC westbound or direct.
- NOTE: PODDE Transition: ATC assigned.
- NOTE: WICHITA FALLS Transition: For all aircraft landing within the Wichita Falls terminal area or overflying the SPS VORTAC.
- NOTE: For all aircraft requesting 17000 and below.



(CONTINUED ON FOLLOWING PAGE)

DENTON, TEXAS  
DENTON ENTERPRISE (DTE)



# KINGDOM FOUR DEPARTURE



## DEPARTURE ROUTE DESCRIPTION

When entering controlled airspace, fly assigned heading for RADAR vectors to appropriate route. Maintain ATC assigned altitude.

LUBBOCK TRANSITION (KING4.LBB): From over TTT VOR/DME on TTT R-250 to PODDE, then on MQP R-081 to MQP VORTAC, then on MQP R-253 and ABI R-071 to ABI VORTAC, then on ABI R-296 and LBB R-114 to LBB VORTAC.

MILLSAP TRANSITION (KING4.MQP): From over TTT VOR/DME on TTT R-250 to PODDE, then on MQP R-081 to MQP VORTAC.

PODDE TRANSITION (KING4.PODDE): From over TTT VOR/DME on TTT R-250 to PODDE.

WICHITA FALLS TRANSITION (KING4.SPS): From over TTT VOR/DME on TTT R-285 to MUZZO, then on MQP R-330 and SPS R-148 to KARYN, then on SPS R-148 to SPS VORTAC.

SC-2, 11 JUL 2024 to 08 AUG 2024

SC-2, 11 JUL 2024 to 08 AUG 2024